



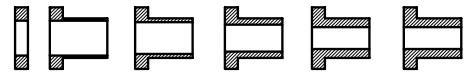
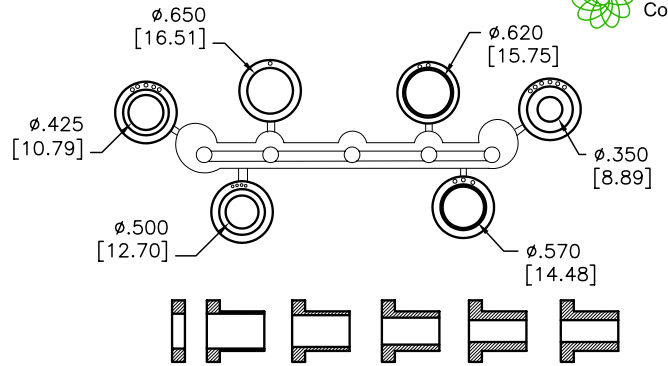
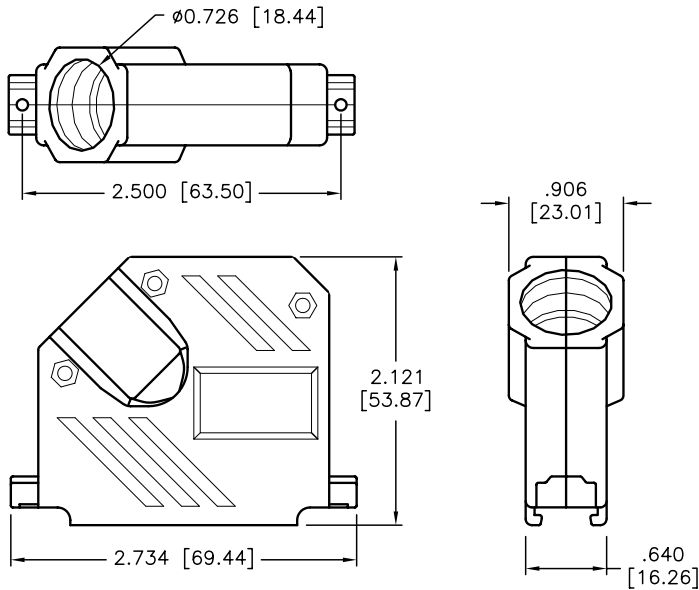
ALL RIGHTS RESERVED. NO PORTION OF THIS PUBLICATION, WHETHER IN WHOLE OR IN PART, CAN BE REPRODUCED WITHOUT THE EXPRESS WRITTEN CONSENT OF SPC TECHNOLOGY.

SPC-F005.DWG

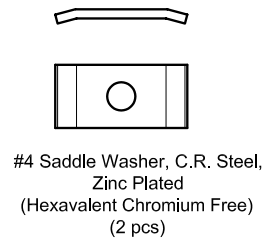
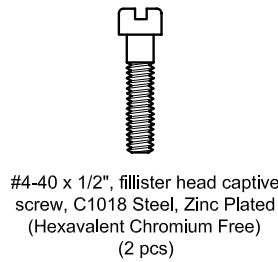
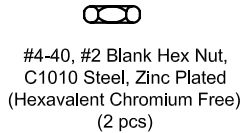
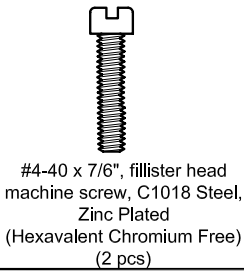
REVISIONS

DOC. NO. SPC-F005 \* Effective: 7/8/02 \* DCP No: 1398

DCP #	REV	DESCRIPTION	DRAWN	DATE	CHECKD	DATE	APPRVD	DATE
1789	A	Released	DCM	12/5/06	TL	2/26/07	JWM	2/26/07



Compression Inserts  
 - Material: Thermoplastic, Black  
 - Durometer: 75±5 Type A per ASTM D2240



DISCLAIMER:  
 ALL STATEMENTS AND TECHNICAL INFORMATION CONTAINED HEREIN ARE BASED UPON INFORMATION AND/OR TESTS WE BELIEVE TO BE ACCURATE AND RELIABLE. SINCE CONDITIONS OF USE ARE BEYOND OUR CONTROL, THE USER SHALL DETERMINE THE SUITABILITY OF THE PRODUCT FOR THE INTENDED USE AND ASSUME ALL RISK AND LIABILITY WHATSOEVER IN CONNECTION THEREWITH.

TOLERANCES:  
 UNLESS OTHERWISE SPECIFIED, DIMENSIONS ARE FOR REFERENCE PURPOSES ONLY.

DRAWN BY:	DATE:
Dan McVicker	12/5/06
CHECKED BY:	DATE:
Tom Lee	2/26/07
APPROVED BY:	DATE:
Jeff McVicker	2/26/07

DRAWING TITLE: D-Sub Cover, Metallized Plastic, 37 Pin, 45 Degree Exit			
SIZE	DWG. NO.	ELECTRONIC FILE	REV
A	SPC15001	80K5410.dwg	A
SCALE: NTS		U.O.M.: INCHES [mm]	SHEET: 1 OF 1