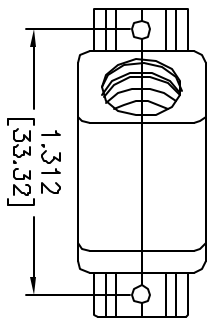


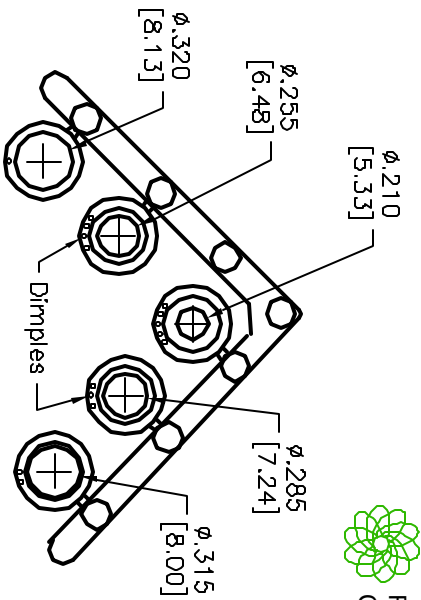
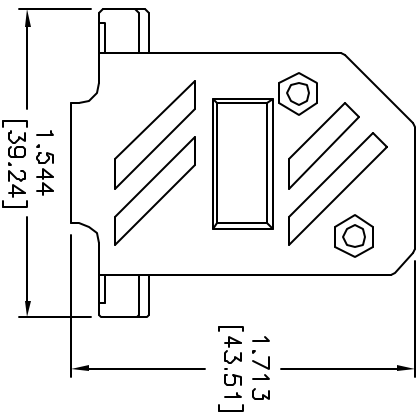
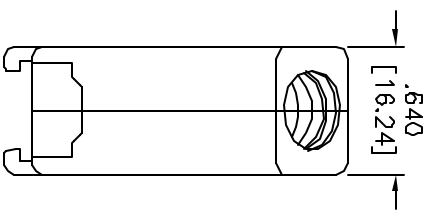
ALL RIGHTS RESERVED. NO PORTION OF THIS PUBLICATION, WHETHER IN WHOLE OR IN PART CAN BE REPRODUCED WITHOUT THE EXPRESS WRITTEN CONSENT OF SPC TECHNOLOGY.

SPC-F005.DWG

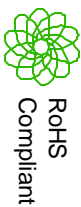
REVISIONS		DCI. NO. SPC-F005	Effective: 7/8/02		DCP No: 1398	
DCP #	REV	DESCRIPTION	DRAWN	DATE	CHECKD	DATE
1789	A	Released	DCM	4/5/07		



Connector Cover  
- ABS Compound - UL94HB  
- Nickel Plated



Compression Inserts  
Material: Thermoplastic  
Color: Black  
Durometer: 75±5 Type A Per ASTM D2240



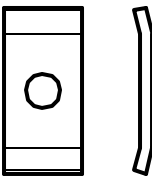
#4-40 x 7/6", fillister head  
machine screw, C1018 Steel,  
Zinc Plated  
(Hexavalent Chromium Free)  
(2 pcs)



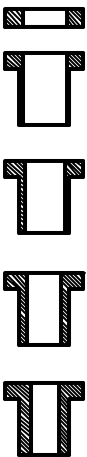
#4-40, #2 Blank Hex Nut,  
C1010 Steel, Zinc Plated  
(Hexavalent Chromium Free)  
(2 pcs)



#4-40 x 1/2", fillister head captive  
screw, C1018 Steel, Zinc Plated  
(Hexavalent Chromium Free)  
(2 pcs)



#4 Saddle Washer, C.R. Steel,  
Zinc Plated  
(Hexavalent Chromium Free)  
(2 pcs)



DISCLAIMER:  
ALL STATEMENTS AND TECHNICAL INFORMATION CONTAINED HEREIN ARE BASED UPON INFORMATION AND/OR TESTS WE BELIEVE TO BE ACCURATE AND RELIABLE. SINCE CONDITIONS OF USE ARE BEYOND OUR CONTROL, THE USER SHALL DETERMINE THE SUITABILITY OF THE PRODUCT FOR THE INTENDED USE AND ASSUME ALL RISK AND LIABILITY WHATSOEVER IN CONNECTION THEREWITH.

TOLERANCES:  
UNLESS OTHERWISE SPECIFIED, DIMENSIONS ARE FOR REFERENCE PURPOSES ONLY.

DRAWN BY:	DATE:
Don McVicker	4/5/07
CHECKED BY:	DATE:
Jason Nash	2/11/08
APPROVED BY:	DATE:
Jason Nash	2/11/08

DRAWING TITLE:		DRAWING FILE	
D-Sub Cover, 15 Pin, Metallized Plastic 45° Exit,		ELECTRONIC FILE	
SIZE	DWG. NO.	REV	REV
A	SPC14997	80K5407.dwg	A
SCALE:	NTS	U.O.M.:	INCHES [mm]
SHEET:	1	DF	1