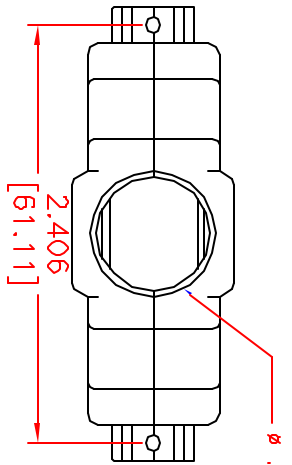


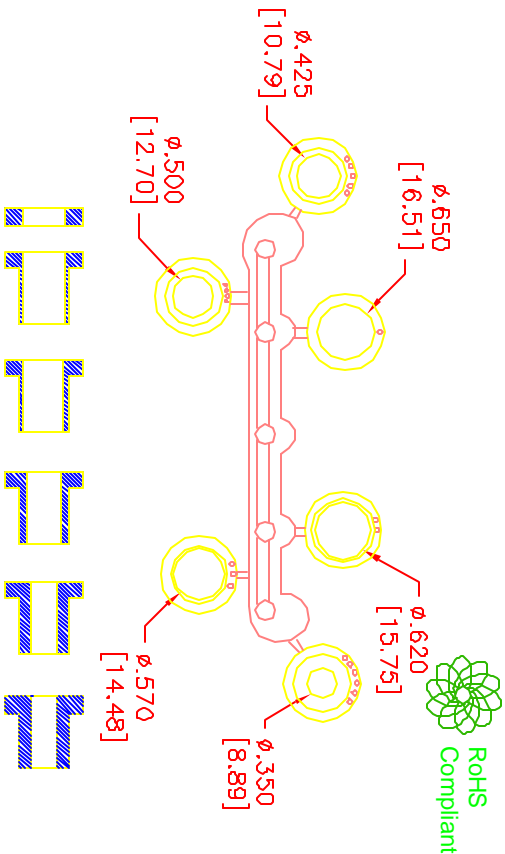
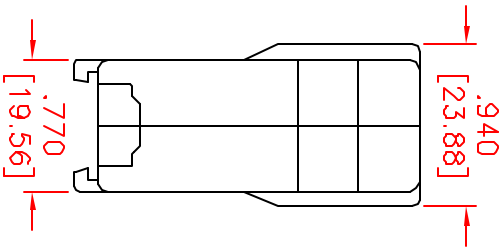
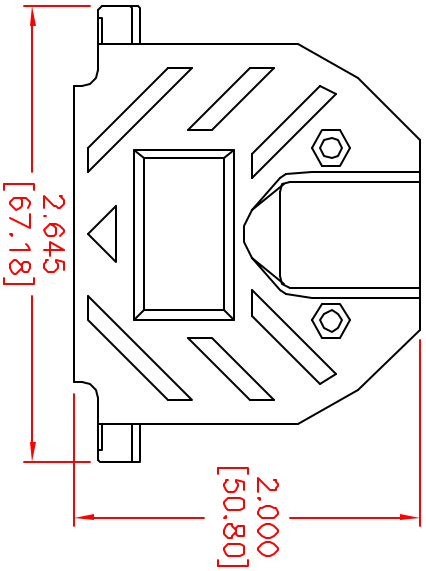
ALL RIGHTS RESERVED. NO PORTION OF THIS PUBLICATION, WHETHER IN WHOLE OR IN PART, CAN BE REPRODUCED WITHOUT THE EXPRESS WRITTEN CONSENT OF SPC TECHNOLOGY.

SPC-F005.DWG

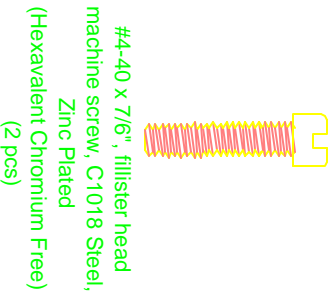
REVISIONS		DCG. NO. SPC-F005	Effective 7/8/02	DCP No. 1398				
DCP #	REV	DESCRIPTION	DRAWN	DATE	CHECKD	DATE	APPRVD	DATE
		NOT Released	JWM	11/20/07	JIN	2/12/08	JIN	2/12/08



Connector Cover
- Material: ABS Compound, UL94-HB
- Nickel Plated



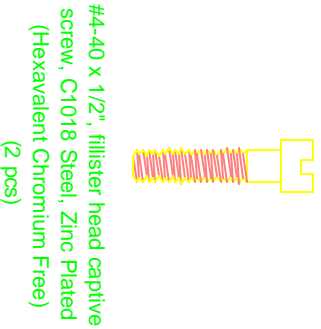
Compression Inserts
- Material: Thermoplastic, Black
- Durometer: 75±5 Type A per ASTM D2240



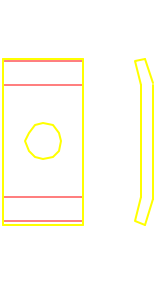
#4-40 x 7/64" fillister head machine screw, C1018 Steel, Zinc Plated (Hexavalent Chromium Free) (2 pcs)



#4-40 #2 Blank Hex Nut, C1010 Steel, Zinc Plated (Hexavalent Chromium Free) (2 pcs)



#4-40 x 1/2" fillister head captive screw, C1018 Steel, Zinc Plated (Hexavalent Chromium Free) (2 pcs)



#4 Saddle Washer, C.R. Steel, Zinc Plated (Hexavalent Chromium Free) (2 pcs)

DISCLAIMER:
ALL STATEMENTS AND TECHNICAL INFORMATION CONTAINED HEREIN ARE BASED UPON INFORMATION AND/OR TESTS WE BELIEVE TO BE ACCURATE AND RELIABLE. SINCE CONDITIONS OF USE ARE BEYOND OUR CONTROL, THE USER SHALL DETERMINE THE SUITABILITY OF THE PRODUCT FOR THE INTENDED USE AND ASSUME ALL RISK AND LIABILITY WHATSOEVER IN CONNECTION THEREWITH.

TOLERANCES:
UNLESS OTHERWISE SPECIFIED, DIMENSIONS ARE FOR REFERENCE PURPOSES ONLY.

DRAWN BY:	Jeff Meytcker	DATE:	11/20/07
CHECKED BY:	Jason Nash	DATE:	2/12/08
APPROVED BY:	Jason Nash	DATE:	2/12/08

DRAWING TITLE:		STRAIGHT METALLIZED-PLASTIC COVER, 50 CONTACTS	
SIZE	DWG. NO.	ELECTRONIC FILE	REV
A	SPC14962	80K5383.dwg	
SCALE:	NTS	U.O.M.: INCHES [mm]	SHEET: 1 OF 1