



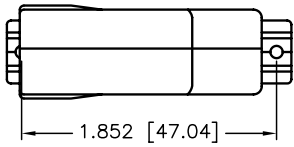
ALL RIGHTS RESERVED. NO PORTION OF THIS PUBLICATION, WHETHER IN WHOLE OR IN PART, CAN BE REPRODUCED WITHOUT THE EXPRESS WRITTEN CONSENT OF SPC TECHNOLOGY.

SPC-F005.DWG

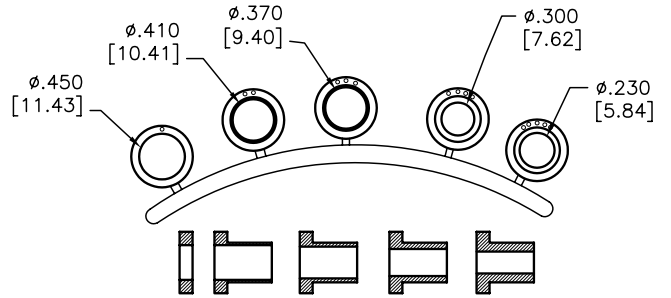
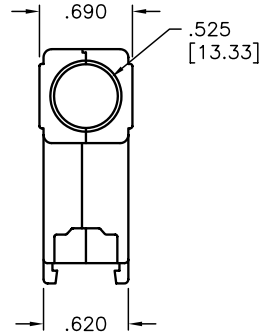
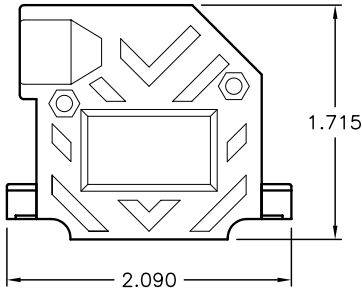
REVISIONS

DOC. NO. SPC-F005 * Effective: 7/8/02 * DCP No: 1398

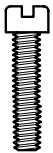
DCP #	REV	DESCRIPTION	DRAWN	DATE	CHECKD	DATE	APPRVD	DATE
1789	A	RELEASED	DCM	10/15/06	TL	10/16/06	JWM	10/16/06



- NOTES:
- COVER MATERIAL: ZINC ALLOY ZAMAK 3
 - FINISH: BRIGHT ZINC PLATING.



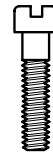
Compression Inserts
 - Material: Thermoplastic, Black
 - Durometer: 75 ±5 Type A per ASTM D2240



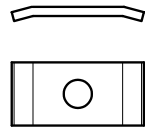
#4-40 x 7/16", fillister head machine screw, C1018 Steel, Zinc Plated (Hexavalent Chromium Free) (2 pcs)



#4-40, #2 Blank Hex Nut, C1010 Steel, Zinc Plated (Hexavalent Chromium Free) (2 pcs)



#4-40 x 1/2", fillister head captive screw, C1018 Steel, Zinc Plated (Hexavalent Chromium Free) (2 pcs)



#4 Saddle Washer, C.R. Steel, Zinc Plated (Hexavalent Chromium Free) (2 pcs)

DISCLAIMER:
 ALL STATEMENTS AND TECHNICAL INFORMATION CONTAINED HEREIN ARE BASED UPON INFORMATION AND/OR TESTS WE BELIEVE TO BE ACCURATE AND RELIABLE. SINCE CONDITIONS OF USE ARE BEYOND OUR CONTROL, THE USER SHALL DETERMINE THE SUITABILITY OF THE PRODUCT FOR THE INTENDED USE AND ASSUME ALL RISK AND LIABILITY WHATSOEVER IN CONNECTION THEREWITH.

TOLERANCES:
 UNLESS OTHERWISE SPECIFIED, DIMENSIONS ARE FOR REFERENCE PURPOSES ONLY.

DRAWN BY:	DATE:
Dan McVicker	10/15/06
CHECKED BY:	DATE:
Tom Lee	10/16/06
APPROVED BY:	DATE:
Jeff McVicker	10/16/06

DRAWING TITLE: 25 Pin D-Sub Cover, Right Angle			
SIZE	DWG. NO.	ELECTRONIC FILE	REV
A	SPC14952	80K5377.dwg	A
SCALE: NTS		U.O.M.: INCHES [mm]	SHEET: 1 OF 1