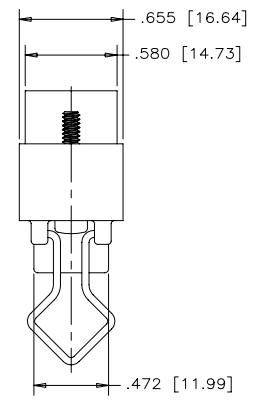
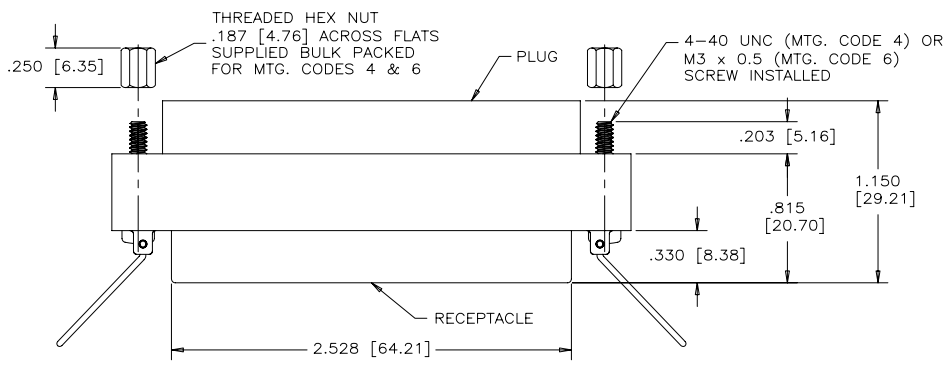
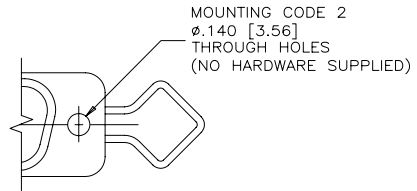
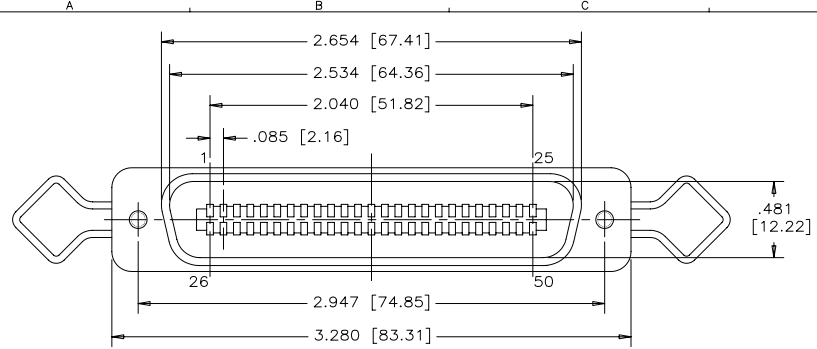


REVISIONS			
REV	ECN, ERN NO.	DATE	APPRD.
A	PRODUCT DRAWING (EAR 12927)	MAR07/06	K.L.



ORDERING CODE:

PART NUMBER **F C E 5 7 - 0 9 5 0 0 - 4 1 0**

SERIES _____

STYLE _____

09=ADAPTER

NUMBER OF CONTACTS _____

MODIFIER _____

0=STANDARD

MOUNTING OPTION _____

2=.140 [3.56] DIA MTG. HOLE (NO SCREWS OR HEX NUTS)

4=#4-40 UNC THREADED SCREW & HEX NUT

6=M3 x 0.5 THREADED SCREW & HEX NUT

MODIFIER
0=STANDARD

CAPACITANCE
D=50 pF 5=1000 pF
B=100 pF 7=1200 pF
O=180 pF E=2200 pF
F=330 pF 9=5600 pF
1=470 pF 8=47000 pF
3=820 pF N=NO FILTERS

ELECTRICAL DATA:
CSA/UL RATING: 250 VDC, 1A MAX.
 REFER TO AMPHENOL CATALOGUE FOR FILTER PERFORMANCE CHARACTERISTICS

MATERIALS: ALL MATERIALS ARE RoHS COMPLIANT

SHELL: ALUMINUM DIECAST, NICKEL PLATED.

CONTACTS: PHOSPHOR BRONZE, 30µ" [0.76 MICRONS] MIN GOLD PLATED OVER 50µ" [1.27 MICRONS] MIN NICKEL ON CONTACT MATING AREAS.

INSERT: HIGH STRENGTH THERMOPLASTIC POLYESTER FLAMMABILITY RATING UL 94V-0, BLACK.

DRAWN A.CHENG	DATE MAR07/06	Amphenol Canada Corp.
DESIGNED		
CHECKED K.LAMBIE	DATE MAR07/06	FCE57 FILTERED MICRO-RIBBON CONNECTOR, PLUG/RECEPTACLE ADAPTER, 50 SIZE, LATCH SPRINGS, RoHS COMPLIANT
I. E. APPRD.		
Q. A. APPRD.		
DWG. APPRD.		
ENG. REL. NO.		DWG. DRAWING NO. P-FCE57-09500-XX0
REF. EAR 12927		REV. A
DIMENSIONS ARE IN INCHES [mm]	CODE ID. NO. 03554	SCALE 2/1 WT. ----- SURF. ----- SHEET 1 OF 1

THIS DOCUMENT CONTAINS PROPRIETARY INFORMATION AND SUCH INFORMATION MAY NOT BE DISCLOSED TO OTHERS FOR ANY PURPOSE OR USED FOR MANUFACTURING PURPOSES WITHOUT WRITTEN PERMISSION FROM AMPHENOL CANADA CORP.