

ORDERING CODE:

PART NUMBER FCC57-09360-110

SERIES \_\_\_\_\_ MODIFIER (0=STANDARD)  
 STYLE \_\_\_\_\_ CAPACITANCE  
 09=ADAPTER D=50 pF 7=1200 pF  
 NUMBER OF CONTACTS \_\_\_\_\_ 0=180 pF 9=5600 pF  
 1=470 pF 8=47000 pF  
 3=820 pF E=2200 pF  
 5=1000 pF N=NON-FILTERED  
 MODIFIER \_\_\_\_\_ REFER TO AMPHENOL  
 0=STANDARD CATALOGUE FOR FILTER  
 PERFORMANCE CHARACTERISTICS  
 MOUNTING CODE \_\_\_\_\_

REVISIONS			
SYM	ZONE	ECN, ERN NO.	DATE
A		PRODUCT DRAWING	02/08/20
			C.S.

THIS IS A CAD DRAWING. DO NOT MANUALLY REVISE.

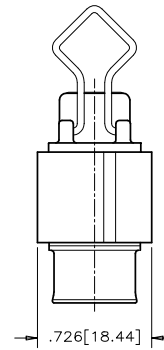
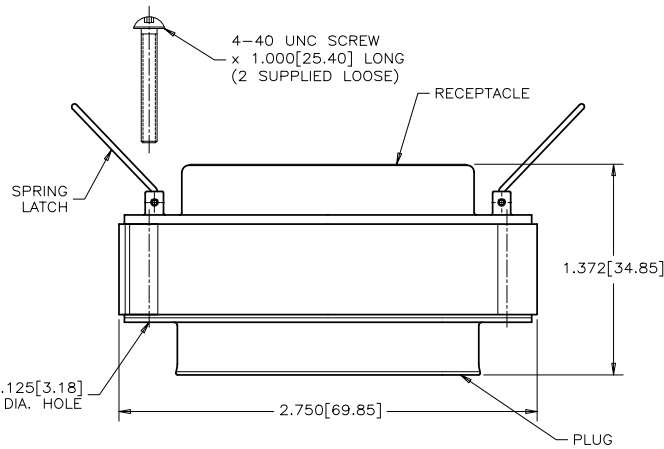
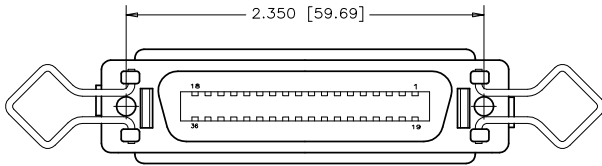
MECHANICAL TECHNICAL DATA:

MATERIALS:

SHELL: ZINC DIECAST (RECEPTACLE), STEEL (PLUG), TIN PLATED.  
 CONTACTS: PHOSPHOR BRONZE, 30 MICROINCHES [0.76 MICRONS] OF GOLD PLATED ON CONTACT MATING AREA OVER NICKEL.  
 INSERT: HIGH STRENGTH THERMOPLASTIC POLYESTER FLAMMABILITY RATING UL 94V-0  
 GROUND SPRING: BERYLLIUM COPPER, TIN PLATED  
 SPRING LATCH: STAINLESS STEEL  
 SIDE SHELLS: ALUMINUM, TIN PLATED.

ELECTRICAL TECHNICAL DATA (FILTERED CONNECTORS):

WORKING VOLTAGE 200 VDC  
 D.W.V. 600 VDC



THIS DOCUMENT CONTAINS PROPRIETARY INFORMATION AND SUCH INFORMATION MAY NOT BE DISCLOSED TO OTHERS FOR ANY PURPOSE OR USED FOR MANUFACTURING PURPOSES WITHOUT WRITTEN PERMISSION FROM AMPHENOL CANADA CORP.

MATERIAL -----	DRAWN C. BOISVERT	DATE 02/08/20	Amphenol Canada Corp.		
	DESIGNED				
FINISH -----	CHECKED		TITLE FCC57, 36 SIZE FILTERED ADAPTER WITH SPRING LATCHES, 4-40 MTG SCREW		
	I. E. APPRD.				
	DWG. APPRD.		DWG. C	DRAWING NO. P-FCC57-09360-1X0	REV. A
	ENG. REL. NO.		SCALE 2/1	WT. -----	SURF. -----
	REF. EAR 11920				SHEET 1 of 1
	DIMENSIONS ARE IN INCHES [mm]	CODE ID. NO. 03554			