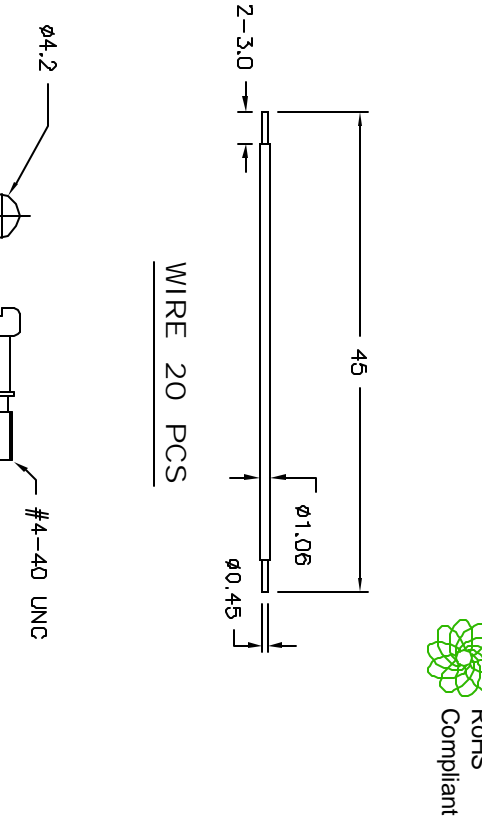
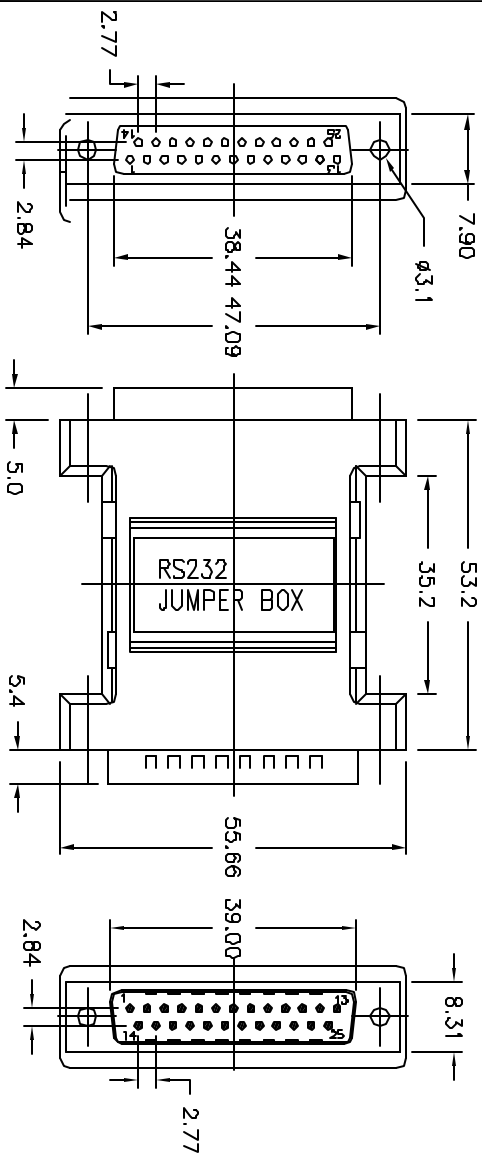
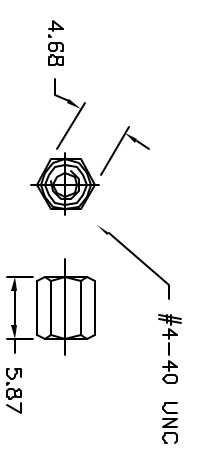
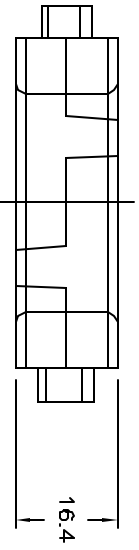


REVISIONS		DOC. NO.	DATE	CHECKED	DATE	APPROVED	DATE
DGP #	REV	DESCRIPTION	DRAWN	DATE	CHECKED	DATE	APPROVED
1921	A	RELEASED	HO	6/25/04	JN	06/26/08	JN
							06/26/08



SPECIFICATION:

- 1 Housing: ABS, Beige Color
- Connector:
 - Terminal= Copper, Gold Flash on contact
 - Area & Tin-Plated on Solder Area
- Shell= Steel, Tin-Plated
- P.C.B: Fiberglass
- Wire: UL1095, 28AWG, Red
- Jackscrew: Copper, Nickel-Plated
- Screw: Copper, Nickel-Plated



DISCLAIMER:
ALL STATEMENTS AND TECHNICAL INFORMATION CONTAINED HEREIN ARE BASED UPON INFORMATION AND/OR TESTS WE BELIEVE TO BE ACCURATE AND RELIABLE. SINCE CONDITIONS OF USE ARE BEYOND OUR CONTROL, THE USER SHALL DETERMINE THE SUITABILITY OF THE PRODUCT FOR THE INTENDED USE AND ASSUME ALL RISK AND LIABILITY WHATSOEVER IN CONNECTION THEREWITH.

TOLERANCES:
UNLESS OTHERWISE SPECIFIED, DIMENSIONS ARE FOR REFERENCE PURPOSES ONLY.

DRAWN BY:	Jason Nash	DATE:	06/26/08
CHECKED BY:	Jason Nash	DATE:	06/26/08
APPROVED BY:	Jason Nash	DATE:	06/26/08

DRAWING TITLE:
Reconfiguration Adapter, Jumper, DB25

SIZE	DWG. NO.	ELECTRONIC FILE	REV
A	SPC19940	83K3685.DWG	A
SCALE:	NTS	U.O.M.: Millimeters	SHEET: 1 OF 1