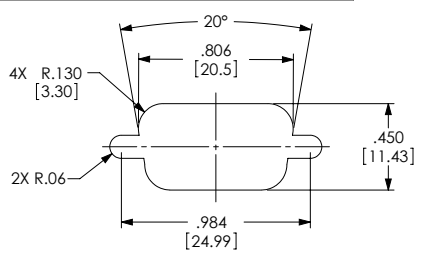


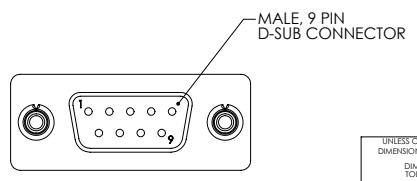
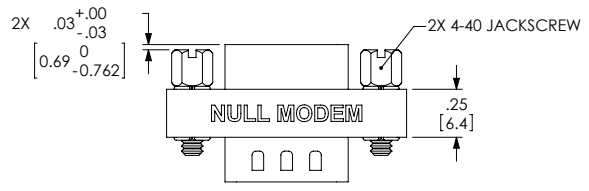
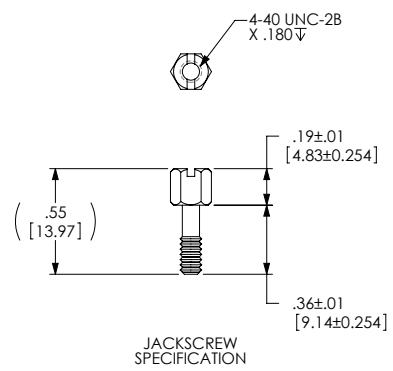
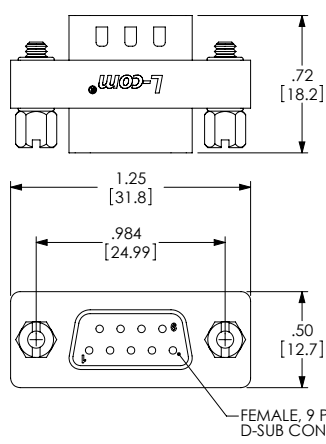
THE INFORMATION CONTAINED IN THIS DRAWING IS THE SOLE PROPERTY OF L-COM, INC. ANY REPRODUCTIONS IN PART OR WHOLE WITHOUT THE WRITTEN PERMISSION OF L-COM, INC. IS PROHIBITED.

REVISIONS			
REV	DESCRIPTION	DATE	CHANGED BY
A	RELEASED FOR PRODUCTION	02/12/2001	MC/COBENCK
B	FOR THE DRAWING UPDATE	02/12/2001	MC/COBENCK
C	ENH. 4016. ADD SHELL TO SHELL IN WBT MAP. NEW FORMAT	03/09/04	D/RESBILD



RECOMMENDED PANEL OPENING  
(MAX PANEL THICKNESS: 0.06")

DB9F	DB9M
PIN 1 & 6	PIN 4
PIN 2	PIN 3
PIN 3	PIN 2
PIN 4	PIN 1 & 6
PIN 5	PIN 5
PIN 7	PIN 8
PIN 8	PIN 7
N/C	N/C
SHELL	SHELL



NOTES:

MATERIAL:  
SHELL: STEEL  
CONTACTS/TERMINALS: COPPER ALLOY  
HARDWARE: BRASS  
INSULATOR: PBT FIBER REINFORCED (UL94V-0)

FINISH:  
SHELL: TIN/NICKEL PLATE  
CONTACTS/TERMINALS: GOLD FLASH PLATED: 1-1.5µ INCHES.  
HARDWARE: NICKEL PLATED.

LABELING:  
PANTONE 2945 BLUE. "L-COM" FONT MyriaMM ITALIC.  
"NULL MODEM" FONT ARIAL BOLD, TEXT HEIGHTS: .085"  
TEXT COLOR: WHITE.

ELECTRICAL:  
CURRENT RATING: 3 AMP

COMPONENT SHALL BE TESTED FOR CONTINUITY.  
COMPONENT SHALL BE INDIVIDUALLY PACKAGED IN A POLY BAG.

UNLESS OTHERWISE SPECIFIED, DIMENSIONS ARE IN INCHES (mm)		APPROVALS	DATE	 45 BEECHWOOD DRIVE NORTH ANDOVER, MA 01845
DIMENSIONAL TOLERANCES: X = ±.1 .XX = ±.01 .XXX = ±.005		DRAWN BY E.C.MICROWICK	02/12/2001	
ANGULAR TOLERANCES: ALL = ±1°		CHECKED BY D.FARRHAM	02/12/2001	CATEGORY
PROJECTION		DESIGNED BY E.CARRICK	02/12/2001	PRODUCT DESCRIPTION
COLOR VARIATIONS MAY OCCUR		CONFIGURATION DETAILS OF UNDIMENSIONED FEATURES MAY VARY		NULL MODEM, DB9 MALE/FEMALE
SCALE: 2:1		REV: <b>B</b>	QCS/100	DWG. NO. DMA060MF
SHEET 1 OF 1		CAD FILE: DMA060MF.SDDRW		REV: C