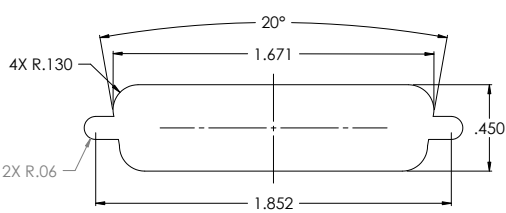
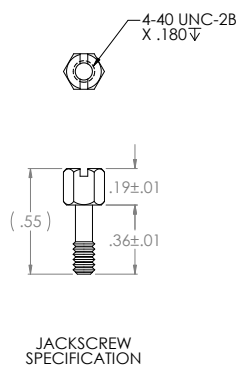
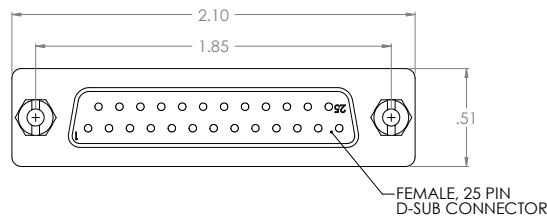
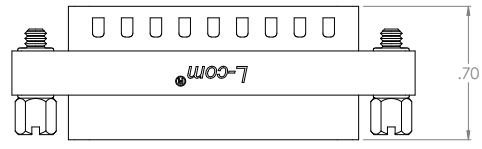


THE INFORMATION CONTAINED IN THIS DRAWING IS THE SOLE PROPERTY OF L-COM, INC. ANY REPRODUCTIONS IN PART OR WHOLE WITHOUT THE WRITTEN PERMISSION OF L-COM, INC. IS PROHIBITED.

REV	DESCRIPTION	DATE	APPROVED
D	ECN #1311 REVISED ELECTRICAL SPECS	02/21/03	MCCORMACK
E	ECN #1431 ADDED COMPONENT SPECIFICATION TABLE	12/10/03	B.MAZURKA
F	ECN #1432 CHG'D COMPONENT SPECIFICATION TABLE	01/05/04	B.MAZURKA
G	ECN #1741 REMOVED HEX STANDOFF FROM ASSEMBLY	06/05/04	R.CARRICK



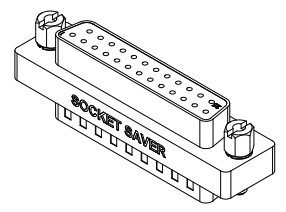
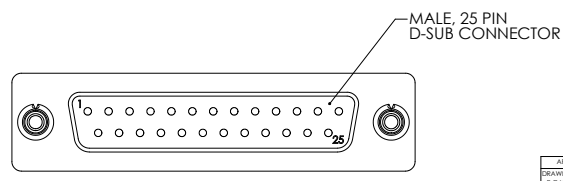
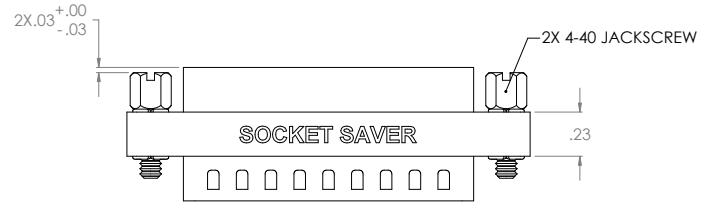
RECOMMENDED PANEL OPENING
(MAX PANEL THICKNESS: 0.06")



APPLICATION NOTES:
ALL PINS WIRED STRAIGHT THROUGH

LABELING:
PANTONE 2945 BLUE, "L-COM" FONT MyriAMM ITALIC,
"SOCKET SAVER" FONT ARIAL BOLD, TEXT HEIGHTS: .085"
TEXT COLOR: WHITE.

Component Specifications	
Material	
Shell	Steel
Contacts/Terminals	Copper Alloy
Hardware	Brass
Insulator	PBT Fiber Reinforced (UL 94V-0 Rated)
Finish	
Shell	Tin/Nickel Plated
Contacts/Terminals	Gold Flash Plated: 1 - 1.5u inches
Hardware	Nickel Plated
Electrical	
Current Rating	3 AMP
Insulation Resistance	1000 MD Min @ 500 VDC
Dielectric Withstanding Voltage	1000 VAC (for One minute)
Environmental	
Operational Temperature Range	55°C to +105°C
	GB111



UNLESS OTHERWISE SPECIFIED
DIMENSIONS ARE IN INCHES
TOLERANCES ARE:
X .1
XX .05
XXX .005
CABLE LENGTH TOLERANCE
-300' ±.5% +300' ±2%

APPROVALS	DATE	PRODUCT DESCRIPTION
DRAWN BY R.CARRICK	9/28/2002	ADPT, SKT SAVER DB25 SLIM M/F
CHECKED BY L.CLARK	09/28/2002	DRAWING TITLE OUTLINE DRAWING
APPROVED BY D.PARKMAN	9/28/2002	SIZE: B 43321 DWG. NO: DGB25MF-OD1 REV: G
CONFIGURATION DETAILS OF UNDIMENSIONED FEATURES MAY VARY		SCALE: 2:1 CAD FILE: DGB25MF-OD1.SLDORW SHEET 1 OF 1

L-com 45 BEECHWOOD DRIVE
NORTH ANDOVER, MA 01845