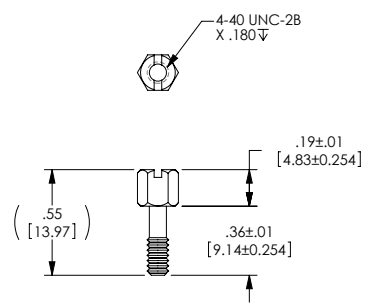
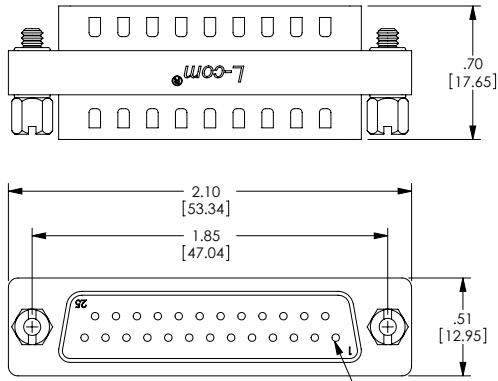
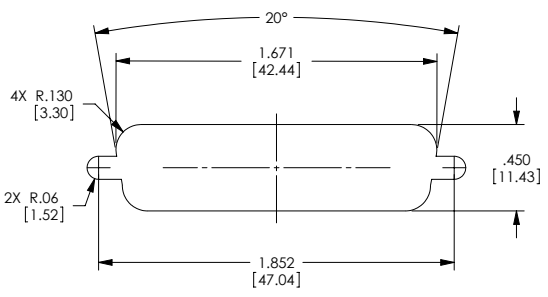


THE INFORMATION CONTAINED IN THIS DRAWING IS THE SOLE PROPERTY OF L-COM, INC. ANY REPRODUCTIONS IN PART OR WHOLE WITHOUT THE WRITTEN PERMISSION OF L-COM, INC. IS PROHIBITED.

REVISIONS			
REV	DESCRIPTION	DATE	CHANGED BY
F	FCN 9999 UPDATED DRAWING AND NEW FORMAT	1/22/10	DJESSELIG
G	FCN 9999 REMOVE NEW PART CONFIGURATION	10/11/10	DJESSELIG



NOTES:

MATERIAL:
SHELL: STEEL
CONTACTS: COPPER ALLOY
HARDWARE: BRASS
INSULATOR: PBT FIBER REINFORCED (UL94V-0 RATED)

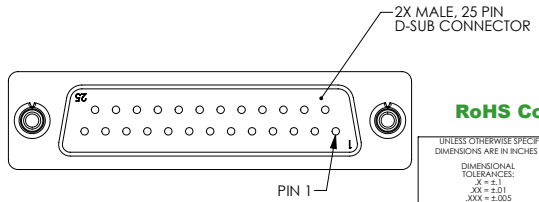
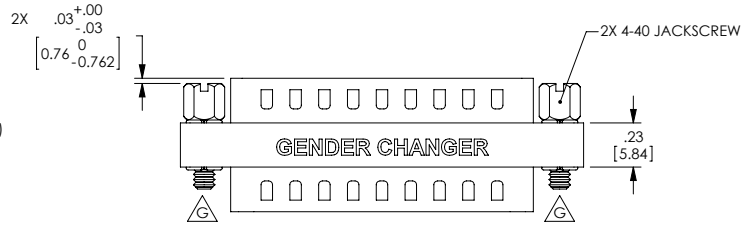
FINISH:
SHELL: TIN/NICKEL PLATED
CONTACTS: GOLD FLASH PLATED, 1-5μ INCHES
HARDWARE: NICKEL PLATED

ELECTRICAL:
CURRENT RATING: 3 AMP
INSULATION RESISTANCE: 1000 MΩ MIN @500 VDC
DIELECTRIC WITHSTANDING VOLTAGE: 1000 VAC (FOR ONE MINUTE)

MISCELLANEOUS:
OPERATING TEMPERATURE RANGE: -55°C TO +105°C.
ALL PINS WIRED STRAIGHT THROUGH.
COMPONENT SHALL BE TESTED FOR CONTINUITY.

LABELING:
PANTONE 2945 BLUE, "L-COM" FONT MyriadMM ITALIC.
"GENDER CHANGER" FONT ARIAL BOLD, TEXT HEIGHTS: .085"
TEXT COLOR: WHITE.

PACKAGING:
COMPONENT SHALL BE INDIVIDUALLY PACKAGED IN ACCORDANCE WITH L-COM SPECIFICATION PS-0031.



RoHS Compliant ✓

UNLESS OTHERWISE SPECIFIED, DIMENSIONS ARE IN INCHES (mm)

APPROVALS

DRAWN BY: E.CARRICK

CHECKED BY: T.CLARE

APPROVED BY: D.PARHAM

DATE: 09/28/2000

DATE: 09/28/2000

DATE: 09/28/02

DIMENSIONAL TOLERANCES:
X ± .1
XX ± 0.01
XXX ± 0.005

ANGULAR TOLERANCES:
ALL ± 1°

CONFIGURATION DETAILS OF UNDIMENSIONED FEATURES MAY VARY

COLOR VARIATIONS MAY OCCUR

PROJECTION

		45 BEECHWOOD DRIVE NORTH ANDOVER, MA 01845	
CATEGORY: D-SUBMINIATURE		PRODUCT DESCRIPTION: ADPT GNDR CHGR DB25 M/M SLIM	
QTY: B 43321	DWG. NO.: DGB25M	REV: G	SCALE: 2:1 CAD FILE: DGB25M.SLDWORK
SHEET 1 OF 1		SHEET 1 OF 1	