

LIGHTED MINIATURE ROCKERS

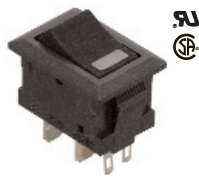


Fig. 1

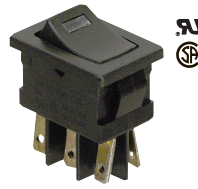


Fig. 2

Retail Part No.	Bulk Part No.	Figure No.	Circuit Function	Poles/Throws	AMPS 125VAC	AMPS 250VAC	Actuator Color	Terminal Type	Mounting Hole	Fig. Spec. Drawing Page/Part No.
35-680	35-680-BU	1	On Off	SPST	5	3	Lighted Orange LED	QC .187"/Solder	0.512 x 0.750	253-A
35-681	35-681-BU	1	On Off	SPST	5	3	Lighted Green LED	QC .187"/Solder	0.512 x 0.750	253-A
35-682	35-682-BU	1	On Off	SPST	5	3	Lighted Red LED	QC .187"/Solder	0.512 x 0.750	253-A
35-645	35-645-BU	2	On Off	SPST	10	5	Lighted Red LED	Solder Eyelet	0.755 x 0.508	253-B
35-646	35-646-BU	2	On Off	DPST	10	5	Lighted Red LED	Solder Eyelet	0.755 x 0.508	253-B

Notes: (On)/(Off)=Momentary On/Off

QC=Quick Connect

(In Series) Resistor Chart for 35-680, 35-681 and 35-682 for DC usage (pilot lamp). Diode for AC usage.

Forward V _{FD}	Current I _{LED}	Reverse V _R	Intensity M _{CD}	Recommended Resistor @ Voltage
				5V 12V 24V
2.1	10	4V	1.6 typ.	270 1K 2.2K

MINIATURE ROCKERS

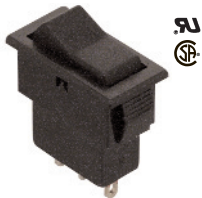


Fig. 3



Fig. 4



Fig. 5

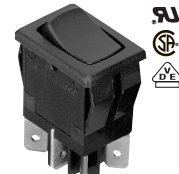


Fig. 6

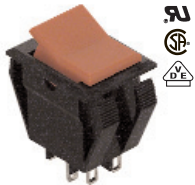


Fig. 7

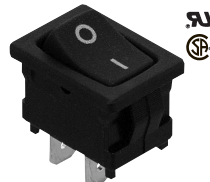


Fig. 8

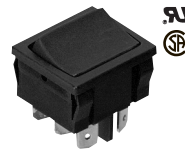


Fig. 9

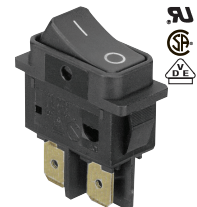


Fig. 10

Retail Part No.	Bulk Part No.	Figure No.	Circuit Function	Poles/Throws	Amps 125 VAC	Amps 250 VAC	Actuator Color	Terminal Type	Imprinting Color and Marking	Mounting Hole	Spec. Drawing Page No.
35-602	35-602-BU	3	On On	SPDT	4	2	Black Plastic	Solder Lug		0.350 x 0.734	253-C
35-603	35-603-BU	3	On (On)	SPDT	4	2	Black Plastic	Solder Lug		0.350 x 0.734	253-C
35-604	35-604-BU	3	On Off On	SPDT	4	2	Black Plastic	Solder Lug		0.350 x 0.734	253-C
35-615	35-615-BU	4	On On	SPDT	4	2	Black	QC .187"		0.508 x 0.756	253-D
35-605	35-605-BU	5	On Off	SPST	8	4	Black/Red Indicating	QC .187"	Red O-	0.508 x 0.756	253-E
35-606	35-606-BU	6	On On	DPDT	8	4	Black	QC .187"		0.508 x 0.756	253-E
35-608	35-608-BU	6	On Off	DPST	8	4	Black	QC .187"		0.508 x 0.756	253-E
35-609	35-609-BU	6	On On	SPDT	8	4	Black	QC .187"		0.508 x 0.756	253-E
35-674	35-674-BU	7	On On	DPDT	8	4	Red Plastic	Solder Lug		0.625 x 0.523	253-F
35-676	35-676-BU	7	On Off On	DPDT	8	4	Red Plastic	Solder Lug		0.625 x 0.523	253-F
35-642	35-642-BU	8	On Off	SPST	10	6	Black Plastic	QC .250"	White O-	0.508 x 0.755	253-G
35-644	35-644-BU	4	On On	SPDT	10	5	Black	QC .187"		0.508 x 0.756	253-D
35-648	35-648-BU	9	On On	DPDT	10	5	Black	QC .187"		0.887 x 0.756	253-D
35-607	35-607-BU	6	On Off	SPST	11	N/R	Black	QC .187"		0.508 x 0.756	253-E
35-643	35-643-BU	10	On Off	DPST	16*	16	Black Plastic	QC .250"	White O-	0.483 x 1.021	253-H
35-3705		10	On Off	DPST	16	16	White Plastic	QC .250"	Black O-	0.483 x 1.021	253-H

Notes: (On)=Momentary On
*1/4 HP @ 125VAC, 1/2 HP @250VAC
N/R= Not Rated

QC=Quick Connect

Note: All figures are for illustration purpose only, and the number/type of terminals may vary.