



Dose 'n Fill Glass Cleaner Concentrate

Technical Data

October 2003

Description:

A concentrated glass cleaner dispensed using the unique 3M™ Dose 'n Fill dispensing technology.

3M Glass Cleaner is a fast-drying, non-streaking product, and will effectively clean soil, water spots, oil, lipstick, hair spray, etc. from non-porous surfaces.

Special Features:

- The Dose 'n Fill cartridge is versatile and convenient, and eliminates the need for special water connection.
- The Dose 'n Fill cartridge is compact and easy to carry.
- The cartridge automatically delivers the correct amount of concentrate to ensure the proper dilution for each 32-ounce sprayer.

Applications:

- Windows and Mirrors
- Fixtures
- Glass
- Stainless steel
- Ceramic Tile
- Chrome
- Marble
- Plexiglass™

Packaging:

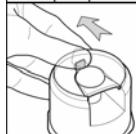
Concentrate:
Net 4.6 Fluid Ounces (139 mL)

Makes 6 Quarts of
Ready-to-Use Glass Cleaner

Fill Directions:



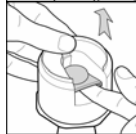
Insert cartridge into a **32 oz. bottle.**



Move safety tab **back** & hold



Push button **down** to release & wait 10 seconds for a **single dose** to empty



Pull button up to reset safety tab and wipe or rinse excess residue from cartridge



Fill with **cold** water to the 32 ounce fill-line & insert trigger sprayer.

General Use Directions:

1. Spray Glass Cleaner directly into a clean cloth or onto the surface
2. Wipe the surface with a clean cloth or paper towel until the surface is clean and dry
3. If using a squeegee, apply cleaner, scrub to loosen soil and then squeegee the surface

Product Specifications:

(Typical Values)

Concentrate:

1. pH: 9.5-10.5 (10% in water)
2. Flashpoint: 118°F
3. Solubility in water: Complete
4. Specific Gravity: 0.9
5. Viscosity: <50 cps
6. Appearance: Dark blue – violet liquid
7. Fragrance: Floral

Ready-to-Use:

1. pH: 10
2. Flashpoint: >200°F
3. Solubility in water: Complete
4. Specific Gravity: 1
5. Viscosity: <50 cps
6. Appearance: Clear blue to blue-violet liquid
7. Fragrance: Floral

Precautionary Summary:

Concentrate:

Eye Contact: Severe eye irritant.
Skin Contact: Corrosive
Inhalation: May cause respiratory irritation.

Ready-to-Use:

Eye Contact: Mild eye irritant.
Skin Contact: Mild irritant after prolonged skin contact.
Inhalation: May cause respiratory irritation.

Note:

Refer to product Material Safety Data Sheet (MSDS: 18-9383-3, 18-9384-1) for specific health hazard, first aid and precautionary information

3M Branch Sales Offices

ANCHORAGE

11151 Calaska Circle
Anchorage, AK 99515
Telephone: 907/522-5200
Facsimile 907/522-1645

CONTINENTAL UNITED STATES

Customer Service Department
3M Center Building 223-5S-07
St. Paul, MN 55144-1000
Order Entry 1-800-852-9722
Facsimile 1-800-447-0408

HONOLULU

4443 Malaai Street
Honolulu, HI 96818
Mail to: P.O. Box 30048
Honolulu, HI 96820
Telephone: 808/422-2721
Facsimile 808/422-9557

CANADA

1840 Oxford Street East
London, Ontario, Canada
N5V 3G2
Mail to: P.O. Box 5757
London, Ontario, Canada
N6A 4T1
Telephone: 800/364-3577
Facsimile: 800/479-4453

Important:

The information provided in this report is believed to be reliable; however, due to the wide variety of intervening factors, 3M does not warrant that the results will necessarily be obtained. All details concerning product specifications and terms of sale are available from 3M.



Building and Commercial Services Division

St. Paul, MN 55144-1000
1-800-852-9722
www.3M.com/commcare

3M is a trademark of 3M Company.

Copyright © 2003, 3M IPC. All rights reserved.