

INLINE® Enclosures

INLINE® Landscape, Type 4 and 12



Industry Standards

Solid Door Enclosures:

UL 508A Listed; Type 3, 4, 12; File No. E61997
 cUL Listed per CSA C22.2 No. 94; Type 3, 4, 12; File No. E61997

NEMA/EEMAC Type 3, 4, 12
 CSA File Number 42186: Type 4, 12
 IEC 60529, IP66

Window Door Enclosures:

UL 508A Listed; Type 12; File No. E61997

NEMA/EEMAC Type 12
 CSA File Number 42186: Type 3, 4, 12
 IEC 60529, IP66

Application

When applications require mounting electrical components the full width of an enclosure, the landscape orientation of this aesthetic INLINE® Enclosure makes it possible. Full-width mounting brackets can be drilled anywhere along their length, providing maximum mounting flexibility.

Specifications

- Metric dimensions
- 16 gauge steel
- Seams continuously welded and ground smooth
- External formed body flange
- Large body opening
- External wall-mounting brackets
- Seamless foam-in-place gasket
- Bonding provision on door
- Grounding stud on body
- Includes panel mounting screws and grounding hardware
- Hinged door with removable hinge pins
- Self-grounding quarter-turn latches
- Door opens 180 degrees
- Window door models include flush-mounted 3/16-in. (4.8-mm) clear polycarbonate window

Finish

Textured light-gray RAL 7035 polyester powder coating inside and out

Accessories

See also *Accessories*.
 DIN Rail or Panel-Mounting Brackets
 DIN3 Rails
 Grounding Kit
 Lock Inserts
 Mounting-Bracket Kit
 Panels for Junction Boxes
 Wing Knob Latch

Modification and Customization

Hoffman excels at modifying and customizing products to your specifications. Contact your local Hoffman sales office or distributor for complete information.

Bulletin: A54

Standard Product Hinged Solid Door

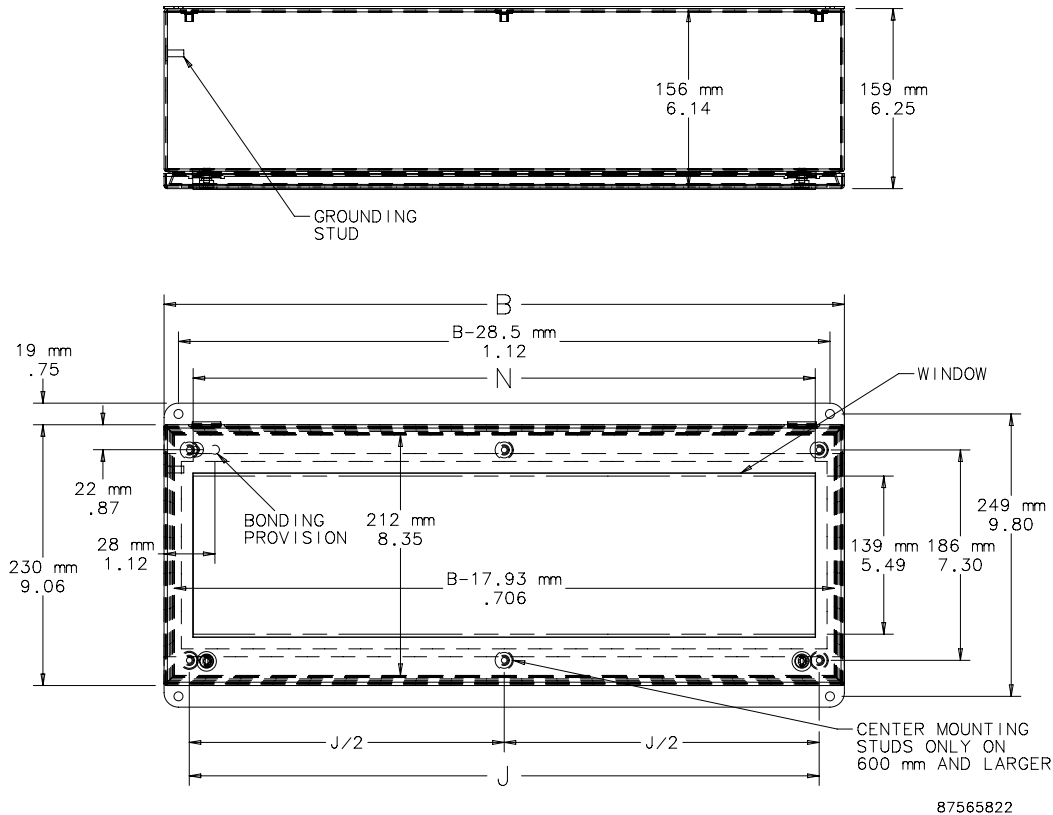
Catalog Number	AxBxC in./mm	Mounting Studs J mm/in.	Clear Space Above Panel mm/in.
LHC233116	9.06 x 12.20 x 6.10	265	140
	230 x 310 x 155	10.45	5.51
LHC234616	9.06 x 18.11 x 6.10	416	140
	230 x 460 x 155	16.36	5.51
LHC236016	9.06 x 23.62 x 6.10	556	140
	230 x 600 x 155	21.88	5.51
LHC237716	9.06 x 30.32 x 6.10	726	140
	230 x 770 x 155	28.57	5.51
LHC239316	9.06 x 36.42 x 6.10	881	140
	230 x 925 x 155	34.67	5.51

Enclosures are hinged on "B" side.
 Purchase panels separately.

INLINE® Enclosures

Standard Product Hinged Window Door

Catalog Number	AxBxC in./mm	Window Size		Mounting Studs		Clear Space Above Panel
		N	mm/in.	J	mm/in.	
LWC233116	9.06 x 12.00 x 6.10	259	10.20	265	10.45	140
	230 x 310 x 155					5.51
LWC234616	9.06 x 18.11 x 6.10	409	16.11	416	16.36	140
	230 x 460 x 155					5.51
LWC236016	9.06 x 23.62 x 6.10	549	21.62	556	21.88	140
	230 x 600 x 155					5.51
LWC237716	9.06 x 30.32 x 6.10	719	28.31	726	28.57	140
	230 x 770 x 155					5.51
LWC239316	9.06 x 36.42 x 6.10	874	34.42	881	34.67	140
	230 x 925 x 155					5.51



Optional Components Selection Table

This table shows which optional components will fit the various sizes of **INLINE Landscape, Type 4 and 12.**

Bulletin: A54

Catalog Number	AxBxC in./mm	Window Door Enclosure	Panel	Conductive Panel	DIN Rail or Panel Mounting Bracket
LHC233116	9.06 x 12.20 x 6.10	LWC233116	LP2331	LP2331G	LMK23
	230 x 310 x 155				
LHC234616	9.06 x 18.11 x 6.10	LWC234616	LP2346	LP2346G	LMK23
	230 x 460 x 155				
LHC236016	9.06 x 23.62 x 6.10	LWC236016	LP2360	LP2360G	LMK23
	230 x 600 x 155				
LHC237716	9.06 x 30.32 x 6.10	LWC237716	LP2377	LP2377G	LMK23
	230 x 770 x 155				
LHC239316	9.06 x 36.42 x 6.10	LWC239316	LP2393	LP2393G	LMK23
	230 x 925 x 155				

The catalog numbers in the first column are solid door enclosures.
600-mm and wider enclosures require two sets of brackets for mounting panels.