

cell type: NiMH
cell size: Sub-C

nominal voltage: 1.2 V
max. charge voltage: 1.5 V
 at standard charge (0.1C / 20°C)

capacity
 nominal: 3000 mAh discharge at 0.2C
 minimum: 2750 mAh discharge at 0.2C
 2600 mAh discharge at 1C
 1.0V end discharge voltage
 ta: 20°C

max. continuous discharge current: 15 A ta: 0...45°C
max. peak current: 30 A

charge
 standard charge: 300 mA 14...16hrs
 quick charge: 850 mA 4hrs
 fast charge: 3000 mA 1.1hrs

recommended charge 5...10 mV - delta V
 termination control 0.8...1 °C temperature rise per minute
 parameters: 45...50 °C TCO (temperature cut off)

trickle charge current: 30...150 mA (recommended)

continuous overcharge: ≤ 300 mA no conspicuous deformation
 (less than 1 year) no leakage

internal resistance: ≤ 6 mΩ at 1KHz
 (impedance) battery fully charged

life expectancy: ≥ 500 cycles acc. IEC standard

self discharge
 charge retention: ≥ 80 % after 6 months storage
 (at ≤ 20°C ambient) ≥ 75 % after 12 months storage

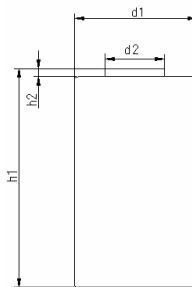
initial capacity: ≥ 2100 mAh within 30 days after delivery
 discharge at 0.2C

ambient temperature range:
 0...45 °C standard charge
 10...40 °C fast charge
 - 20...65 °C discharge (≤1.0C)
 0...45 °C discharge (>1.0C)
 - 20...50 °C storage (≤3months)
 - 20...40 °C storage (≤6months)
 - 20...30 °C storage (≤24months)

QCT1: 20/2700/6
 QCT2: 30/2550/8

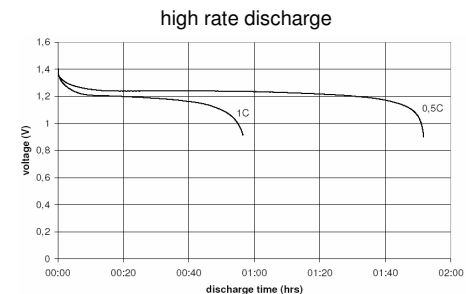
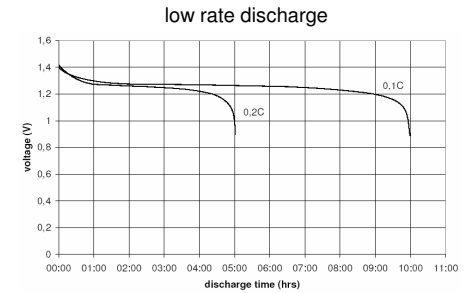
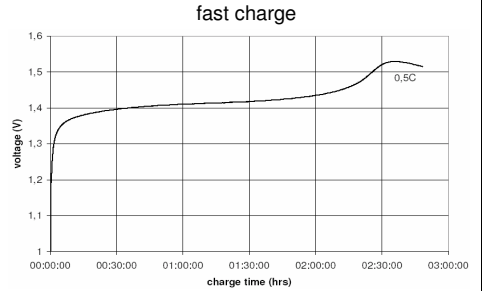
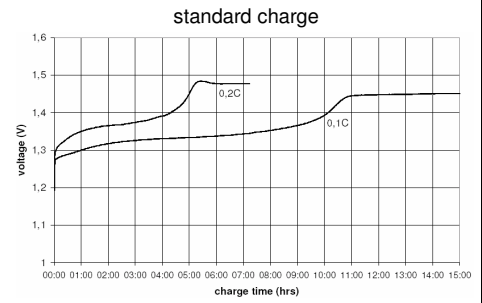
mechanical specifications

cell dimensions (incl. label)
 diameter d1: 22.5 ± 1.0 mm
 diameter d2: 10.0 ± 1.0 mm
 height h1: 43.0 ± 1.0 mm
 height h2: min. 0.3 mm
 weight: 59 ± 5 g



Conditions

Diagrams



	ANSMANN Specifications for model:	SubC - 3000mAh low self discharge bulk package
	data sheet no. / part no.	5035381
	version no.	0
	author / date	Gramlich / 13.03.2009

Manufacturer reserves the right to alter or amend the design, model and specification without prior notice