

nominal voltage: 1,2V
max. charge voltage: 1,5V

capacity
 nominal : 5000mAh
 minimum: 4000mAh
 3800mAh

max. continuous discharge current: 5000mA

charge
 standard charge: 500mA
 quick charge: 1400mA
 fast charge: 2500mA

recommended charge termination control parameters:
 -dV: 0....10mV
 dT/dt: 0,8....1 °C per min
 TCO: 45....50 °C

trickle charge current: 50....250mA (recommended)

continuous overcharge: <500mA (less than 1 year)

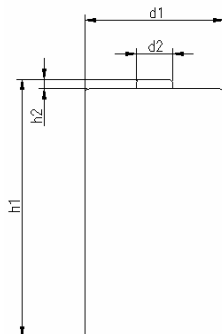
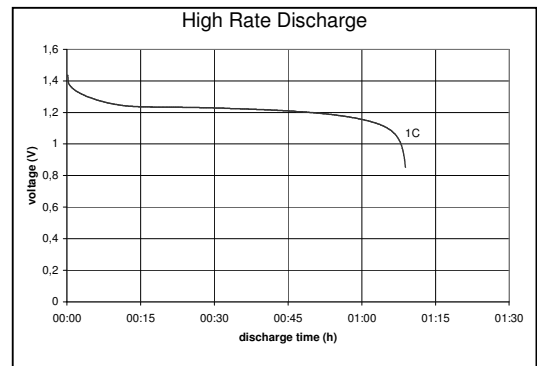
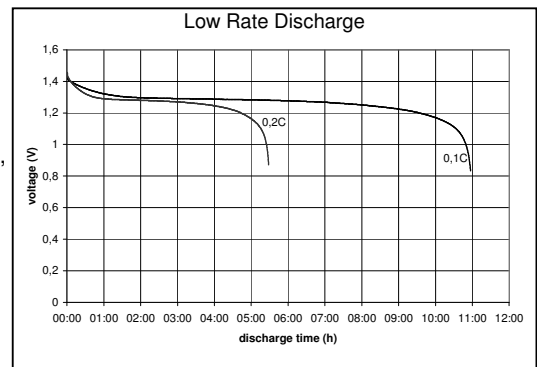
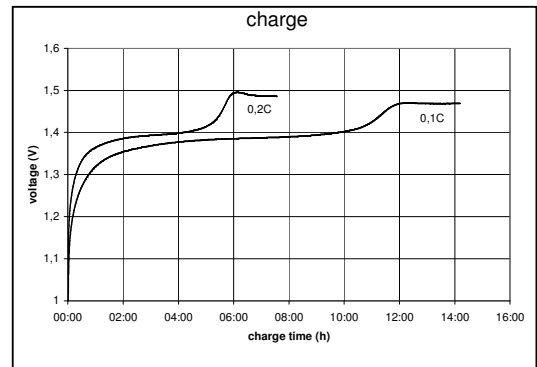
internal resistance: ≤25mOhms

life expectancy: >500 cycles

ambient temperature range: 0....45 °C
 10....40 °C
 -20....60 °C
 -20....35 °C

conditions
 at standard charge (0,1C / 20 °C)
 discharge at 0,2C
 discharge at 0,2C
 discharge at 0,5C
 1,0V end discharge voltage
 ambient temperature 20 °C
 ambient temperature -20....60 °C
 charge current charge time
 500mA 16hrs
 1400mA 4hrs
 2500mA 2,2hrs

at 1000Hz,
 battery fully charged
 IEC standard
 standard charge
 rapid charge
 discharge
 storage less than 6 months



mechanical specifications
 cell dimensions (with sleeve)
 diameter d1: 33,0 -1,0mm
 diameter d2: 9,5 -2,5mm
 height h1: 61,5 -2,0mm
 height h2: min. 1,5mm
 weight: approx. 108g

	specifications for model/type:	D – NiMH 5000mAh
		2 pcs blister packing
	Ansmann drawing number / part number:	5030922
	author / date:	Gramlich / 07.08.2007