

nominal voltage: 1,2V
max. charge voltage: 1,5V

capacity
 nominal : 10000mAh
 minimum: 8300mAh
 9300mAh

max. continuous discharge current: 10A

charge
 standard charge: 1000mA
 rapid charge: 2500mA
 fast charge: 5000mA

recommended charge
 termination control parameters:
 -dV: 0....5mV
 dT/dt: 0,8....1°C per min
 TCO: 45....50°C

trickle charge current: 100....500mA (recommended)

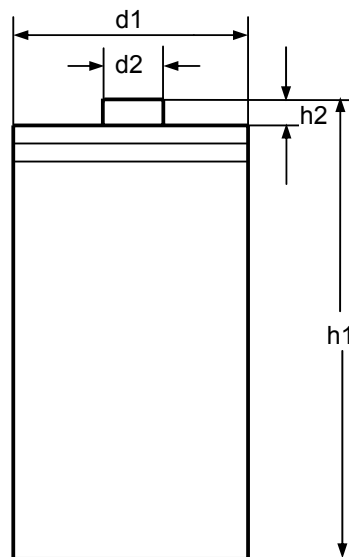
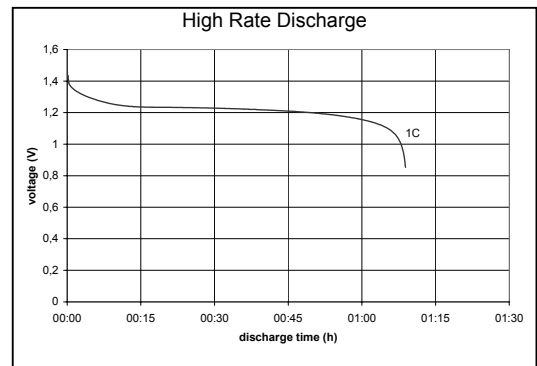
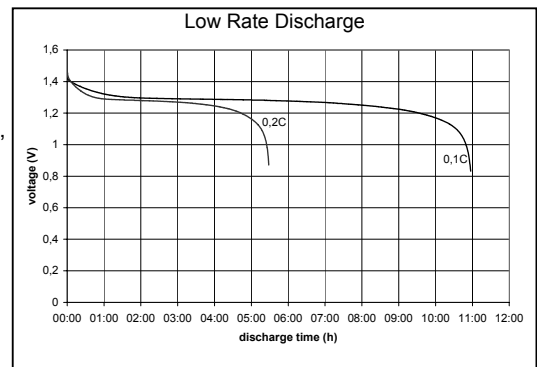
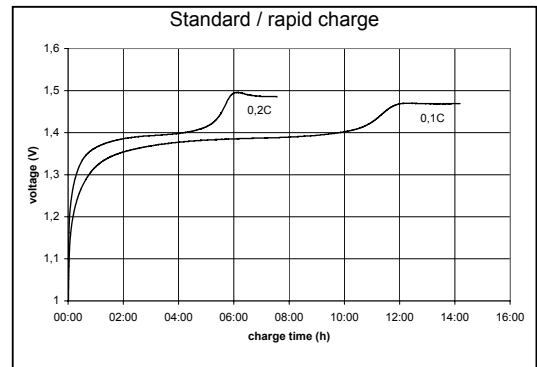
continuous overcharge: ≤750mA (less than 1 year)

internal resistance: ≤15mOhms


life expectancy: >500 cycles

ambient temperature range: 0....45°C
 10....40°C
 -20....60°C
 -20....35°C
 -20....45°C

conditions
 at standard charge (0,1C / 20°C)
 discharge at 0,2C
 discharge at 1C
 discharge at 0,2C
 1,0V end discharge voltage
 ambient temperature 20°C
 ambient temperature 20....50°C
 charge current charge time
 16hrs
 4,4hrs
 2,2hrs
 at 1000Hz, battery fully charged
 IEC standard
 standard charge
 fast charge
 discharge
 storage less than 6 months
 storage less than 1 month



mechanical specifications
 cell dimensions (with sleeve)
 diameter d1: 33,0 -1,0mm
 diameter d2: 8,0 ±1,0mm
 height h1: 61,5 -2,0mm
 height h2: min. 1,5mm
 weight: approx. 155g

	specifications for model/type:	D – NiMH 10000mAh
	Ansmann drawing number / part number:	5030641
	drawn by / date:	Gramlich / 27.12.2005