



## NP10-6 NP10-6FR

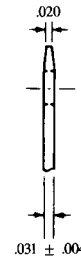
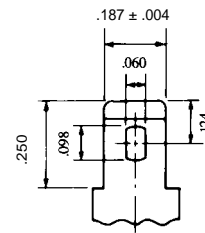
Sealed Rechargeable  
Lead-Acid Battery

### 6V, 10Ah

### Specifications

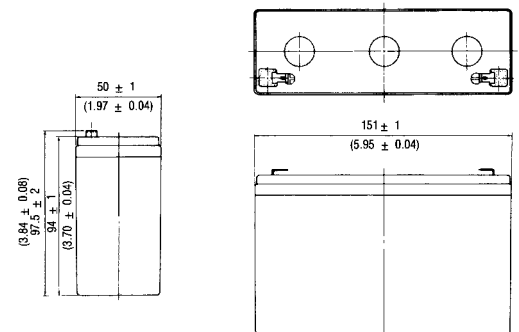
- **NOMINAL VOLTAGE:** 6V
- **NOMINAL CAPACITY:**
  - 20 hr. rate of 0.50A to 5.25V 10.0Ah
  - 10 hr. rate of 0.93A to 5.25V 9.3Ah
  - 5 hr. rate of 1.70A to 5.10V 8.5Ah
  - 1 hr. rate of 6.00A to 4.80V 6.0Ah
- **WEIGHT (approx.):** 4.41 pounds (2.0 kgs.)
- **ENERGY DENSITY (20 hr. rate):** 1.40 WH/cubic inch (85 WH/liter)
- **SPECIFIC ENERGY (20 hr. rate):** 13.6 WH/pound (30.0 WH/kg)
- **INTERNAL RESISTANCE OF CHARGED BATTERY:** 10 milliohms (approx.)
- **MAXIMUM DISCHARGE CURRENT WITH STANDARD TERMINALS:** 40 amperes
- **MAXIMUM SHORT-DURATION DISCHARGE CURRENT:** 300 amperes
- **OPERATING TEMPERATURE RANGE:**
  - CHARGE 5°F to 122°F (-15°C to 50°C)
  - DISCHARGE -4°F to 140°F (-20°C to 60°C)
- **CHARGE RETENTION (shelf life) at 68°F (20°C):**
  - 1 month 97%
  - 3 months 91%
  - 6 months 85%
- **LIFE EXPECTANCY:**
  - STANDBY USE 3 to 5 years
  - CYCLE USE (approx.):
    - 100% depth of discharge 250 cycles
    - 50% depth of discharge 550 cycles
    - 30% depth of discharge 1200 cycles
- **SEALED CONSTRUCTION:** Can be operated in any position without leakage.
- **STANDARD TERMINAL:** Quick Disconnect .187 or Optional .250
- **HOUSING MATERIAL:** ABS Resin
- **OPTIONAL:** Container and cover made from Flame Retardant ABS (UL94-V0/L.O.I.>28%)

### Terminal



INCH = MM	
.250	6.35
.185	4.70
.124	3.15
.098	2.49
.060	1.52
.031	0.79
.020	0.51
.004	0.10

### Dimensions



DIMENSIONS: MM (INCHES)



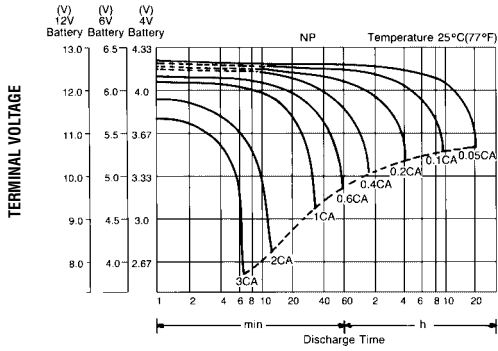
RECOGNIZED BY UL, File No. MH 16464

# EnerSys™

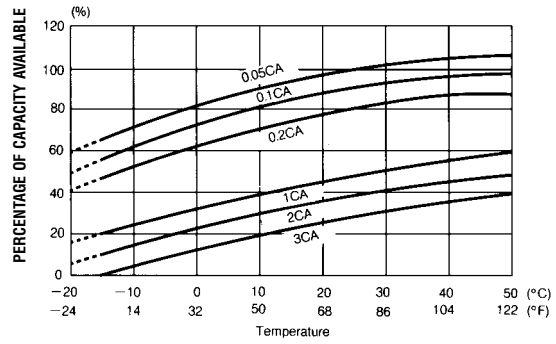
Power/Full Solutions™

Publication No: US-NP10-6-01 • November 2002

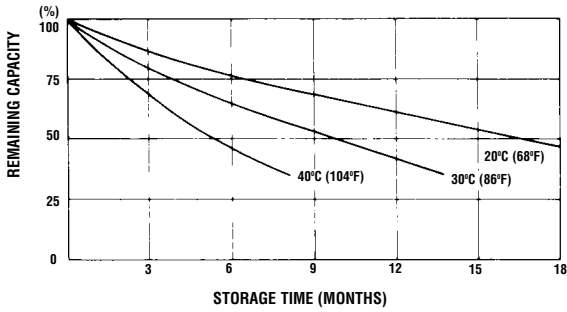
### DISCHARGE CHARACTERISTIC CURVES AT 25°C (77°F)



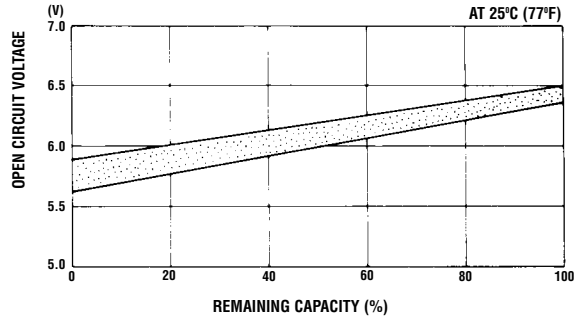
### TEMPERATURE EFFECTS IN RELATION TO BATTERY CAPACITY



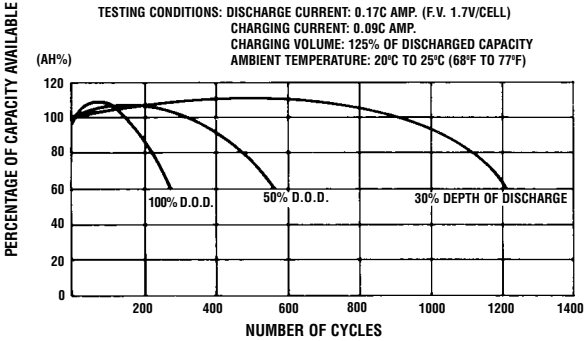
### SELF DISCHARGE CHARACTERISTICS



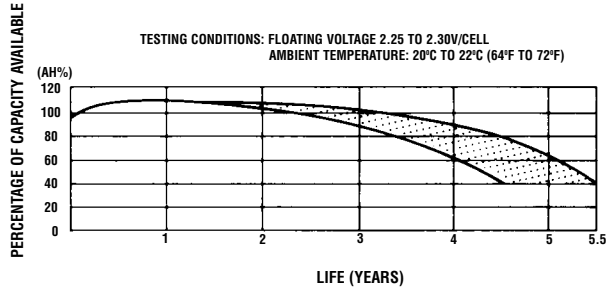
### OPEN CIRCUIT VOLTAGE VS REMAINING CAPACITY



### CYCLE SERVICE LIFE IN RELATION TO DEPTH OF DISCHARGE



### FLOAT SERVICE LIFE



When the battery will be used by current in excess of 30A, consult with EnerSys, Inc. prior to use.

#### CHARGING METHODS (At 20°C)

**Cycle use:** Maximum charging current 2.5A  
 Charging voltage 7.2 to 7.5V  
**Standby use:** Float charging voltage 6.75 to 6.90V

#### CAUTION

- Avoid short circuit
- Do not charge in a sealed container.



**EnerSys Inc.**  
 P.O. Box 14145  
 Reading, PA 19612-4145  
 USA  
 Tel: +1-610-208-1991  
 +1-800-538-3627

**EnerSys EMEA**  
 Brussels, Belgium  
 Tel: +32 (0)2 247 94 47  
**EnerSys Asia**  
 Guangdong, China  
 Tel: +86 755 2689 3639

Represented by:

