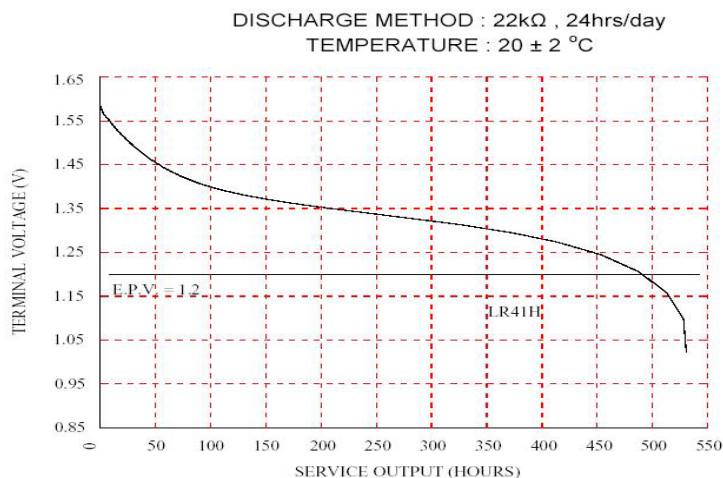
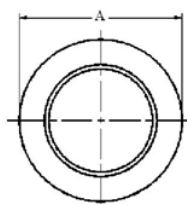


<b>nominal voltage:</b>	1,5V	<b>conditions</b>
<b>off load voltage:</b>	1,55...1,62V	new battery
<b>capacity:</b>		
nominal:	25mAh	continuous discharge at 20°C under 22kohms load, end-point voltage 1,2V
<b>electrical characteristics:</b>	≥ 1,55V	off load voltage
(new battery)	≥ 1,54V	on load voltage, under 22Kohms load, measuring time 0,3s
<b>service output:</b>	490h	new battery (tested within 30 days after delivery)
	440h	after 12 months storage at room temperature
		discharge load 22Kohms, daily discharge time 24h, end-point voltage 1,2V
<b>shelf life:</b>	12months	after delivery, under proper storage conditions
	90%	of the capacity will be maintained after 12 months storage
<b>safety characteristics</b>		
<b>short circuit:</b>	no explosion shall be	at 20°C, short circuit period 24h
<b>chemical system:</b>	Zinc-Manganese Dioxide (Potassium Hydroxide Electrolyte)	

**discharge diagram:**



Dimensions ( in mm ) :



Dimensions	Specification
<b>A</b>	∅ 7.90 <sup>+0.00</sup> <sub>-0.35</sub>
<b>B</b>	3.20 <sup>+0.00</sup> <sub>-0.25</sub>
<b>C</b>	3.60 <sup>+0.00</sup> <sub>-0.30</sub>

	specifications for model/type:	Alkaline Button Cell LR41
	Ansmann drawing number / part number:	5015332
	drawn by / date:	Gramlich / 26.05.2005