

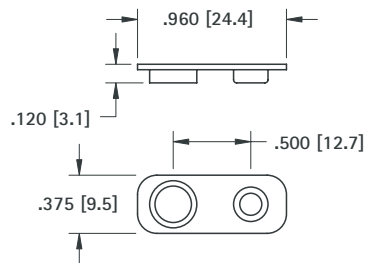
PROTECTIVE BATTERY CAP

- Protects 9 Volt batteries and battery packs when they are not in use
- Snap-fits onto battery contacts
- Both male and female contacts are covered, minimizing physical damage which can occur during battery handling, shipping and storage
- Shields the battery contacts and reduces the potential of a short circuit between battery poles
- Protects sensitive electronic equipment, systems and circuits, cap prevents unwanted electrical discharges
- Protects the battery contacts from damage due to dust, dirt and contamination

MATERIAL:

Impact Resistant Polypropylene, Black

CAT. NO. 96

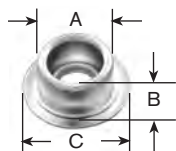


BATTERY SNAP-ONS

For most electronic applications requiring a quick connect and disconnect of circuit. Commonly used with 9 Volt or other batteries designed with snap fasteners. Ideal for temporary or permanent means of connecting without soldering. Can be cascaded together for multiple connections.

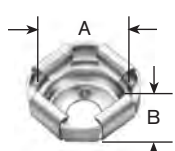
SOCKET OR STUD ONLY

FIG. 1



Stud only

FIG. 2



Socket only

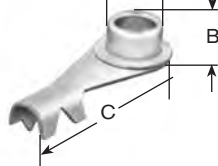
CAT. NO.	FIG. NO.	A	B	C	HOLE	SIZE	MATERIAL
261*	1	.225 (5.7)	.135 (3.4)	.312 (7.9)	.093 (2.4)	Junior	Steel, Nickel Plate
269*	2	.205 (5.2)	.156 (4.0)	—	—	Junior	Steel, Nickel Plate
262	1	.283 (7.2)	.143 (3.6)	.425 (10.8)	.125 (3.2)	Senior	Brass, Nickel Plate
270	2	.265 (6.7)	.156 (4.0)	—	—	Senior	Brass, Nickel Plate

*Use Jr. Socket and stud for standard 9 Volt Battery

DIMENSIONS ARE FOR REFERENCE ONLY

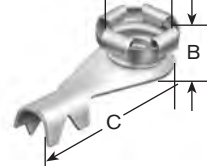
SOCKET OR STUD W/CRIMP LUG

FIG. 3



Stud w/Crimp Lug

FIG. 4



Socket w/Crimp Lug

CAT. NO.	FIG. NO.	A	B	C	SIZE	MATERIAL
263*	3	.225 (5.7)	.170 (4.3)	.790 (20.1)	Junior	Stud: Steel, Nickel Plate Lug: Brass, Tin Plate
271*	4	.205 (5.2)	.200 (5.1)	.790 (20.1)		
264	3	.283 (7.2)	.185 (4.7)	.840 (21.3)	Senior	Stud: Brass, Nickel Plate Lug: Brass, Tin Plate
272	4	.265 (6.7)	.185 (4.7)	.835 (21.2)		

*Use Jr. Socket and stud for standard 9 Volt Battery

DUAL 9 VOLT BATTERY STRAP

This dual battery strap is pre-wired for connecting two 9 Volt batteries. Base made from fibre material with steel, nickel plated contacts. Wires have tinned copper conductors, PVC insulation and the ends are stripped for easy connection. Wires meet UL/CSA #1061 requirements.

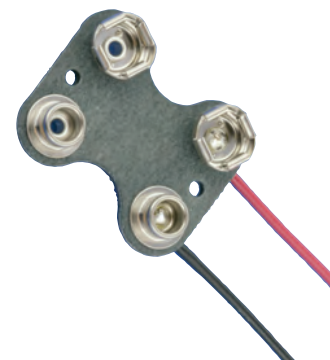
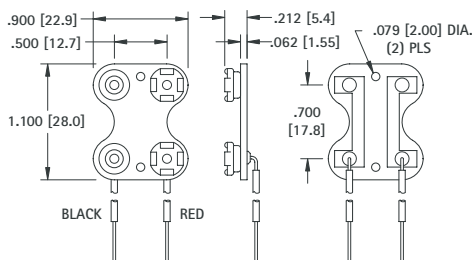
SPECIFICATIONS

Contacts: Steel, Nickel Plate
Wire: #22 AWG, 7/30 Prebond
End Strip: .375 (9.5) Long, Tinned

CAT. NO.	*LEAD LENGTH
227	7.00 (177.8)

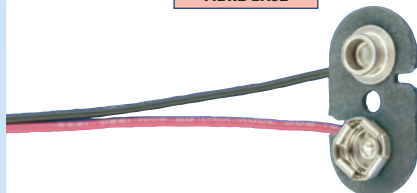
*Tolerance on lead length +/- .250 (6.4)

PARALLEL



PREMIUM 9 VOLT BATTERY STRAPS

FIBRE BASE

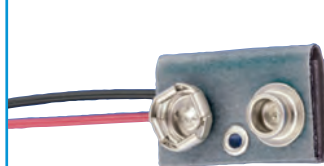


CAT. NO.	*LEAD LENGTH
68	NONE
72-4	4.00 (101.6)
72	7.00 (177.8)
72-8	8.00 (203.2)

Base Size:
.900 (22.9) x .535 (13.6)
.062 (1.57) thick
Contacts: Steel, Nickel Plate
Wire: #22 AWG, 7/30 Prebond
End Strip: .375 (9.5) Long, Tinned

*Tolerance on lead length +/- .250 (6.4)

FIBRE COVER



Cover Size:
.900 (22.9) x .575 (14.6)
Contacts: Steel, Nickel Plate
Wire: #22 AWG, 7/30 Prebond
End Strip: .375 (9.5) Long, Tinned

*Tolerance on lead length +/- .250 (6.4)

- Fully Insulated
- Flexible assembly

I - STYLE

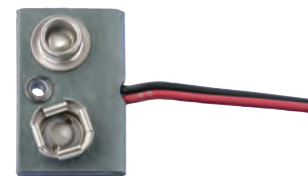
CAT. NO.	*LEAD LENGTH
83-4	4.00 (101.6)
83	6.50 (165.1)
83-8	8.00 (203.2)

Cover Size:
.900 (22.9) x .575 (14.6)
Contacts: Steel, Nickel Plate
Wire: #22 AWG, 7/30 Prebond
End Strip: .375 (9.5) Long, Tinned

*Tolerance on lead length +/- .250 (6.4)

T - STYLE

CAT. NO.	*LEAD LENGTH
85-4	4.00 (101.6)
85-6	6.50 (165.1)
85-8	8.00 (203.2)



*Tolerance on lead length +/- .250 (6.4)