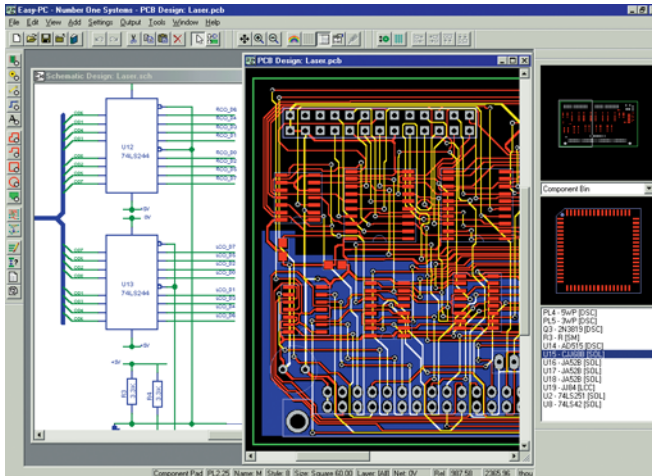


Easy-PC For Windows Electronic CAD Modular, expandable electronics design system

Number One Systems



The **Easy-PC For Windows** product family is a modern 32 bit Windows based product running under Windows® 95 to XP. Each software module can be used together as an integrated electronics design environment.

Overview:

Easy-PC For Windows is an advanced professional Schematic and PCB design system. **Easy-PC** allows the user to draw the schematic and simulate it using the **Easy-Spice A/D mixed mode simulator**. The Schematic editor enables easy modification of the components and values to check the performance of the circuit as required. Once the circuit is correct, within the same

environment and using the same libraries, the schematic is translated to the **PCB design editor** and the printed circuit board is laid out. The **Easy-Router II autorouter** enables the conversion from the 'rats-nest' into copper tracks. At all times the connectivity and design rules can be checked automatically to ensure that the PCB matches the schematic and that all the rules set have been obeyed.

The software is available in four different levels of functionality ranging from a low cost edition with 500 pins to a full 'unlimited pins' version.

System Features:

- Fully integrated 32 bit Windows program
- Schematic and PCB design editors included as standard
- Supplied with libraries and easy editing library manager
- Library wizards for easy creation of library items
- Project browser maintains projects
- Unlimited Undo and Redo
- Link to optional integrated Spice based A/D mixed mode simulator
- Support true mixed imperial and metric design units, resolution down to 1/100th micron
- Rotation steps of all design items to 1/10th degree
- Comprehensive design rules checking between schematic and PCB designs at all times
- True connective database, everything stays connected when moved or edited
- Supports Truetype fonts – makes drawings look professional
- Export Windows Metafile format
- Optional integrated 'autorouter' available for 500 pin version (supplied with 1000 and 2000 pin versions)
- Supplied on CDROM and with a 300+ page Users Guide

Professional PCB Layout

- A professional PCB design package capable of dense complex PCBs or simple single sided designs,
- Pin limited variants available for 500, 1000, 2000 and unlimited pins
- Unlimited Layers (of any type)
- Supports through-hole and SMD technology on **both** sides of the board
- True shape based copper pour partial or full power planes, also supports split power planes
- Integrated with Easy-PC Schematics
- Accepts netlists from other systems such as OrCAD and EWB
- Nets dynamically optimised as components are moved on-screen

- Full design rules checking online and dialog driven checks
- Customisable report writer for Parts and Net lists
- Measure gap tool
- Integrated 'Autoplace' of components
- Import and Export to DXF
- Import of Gerber files (optional)
- Output to Gerber RS-274-D and extended Gerber RS-274-X formats available
- Plotting of Solder and Paste masks, and other special plots
- Output to Pen plotters and Excellon NC Drill
- Output to all Windows printers – colour and B/W, any scale
- Parts lists and Bill-of-Materials in report format and CSV format

Professional Schematic Capture

- Flat or project based multi-sheet schematics
- Forward and back annotation from PCB
- Cross probe designs between SCM / PCB and vice versa
- Dynamic drag and drop move of items
- Drag and drop of Components to/from Component Bin
- Intelligent busses
- Supports off-sheet nets, global nets and automatic power rails
- System defined and user defined net names
- Find facility of X,Y, Components, Nets, and Relative origin
- Automatic updating of PCB design from Schematics
- User defined Colours of design items
- Schematic symbol wizard for fast symbol creation

System requirements: Pentium PC with at least 64Mb RAM, 50Mb of hard drive space, Runs under Windows® '95 to XP (Win XP recommended)

Description		order code	Price each	
EPCWIN Unlimited	Full Version	489-4080	1+	2+
EPCWIN-2000	2000 pin limited	489-4091	1+	2+
EPCWIN-1000	1000 pin limited	489-4108	1+	2+
EPCWIN-500	500 pin limited	489-4110	1+	2+