

## Clamp-Cover Junction Boxes

### Lift-Off-Cover, Type 12



#### Application

With a chain-secured, lift-off clamp cover, this enclosure meets basic functionality requirements for housing controls and instrumentation.

#### Specifications

- 16 or 14 gauge steel (see table)
- Seams continuously welded and ground smooth
- External screw clamps
- Lift-off cover
- Bonding provision on cover
- Chain holds cover to box when cover is removed
- Oil-resistant gasket
- Weldnuts provided for mounting optional panels and terminal block kits in size 6.00 x 4.00 in. (152 x 102 mm) and larger
- External wall-mounting brackets

#### Finish

ANSI 61 gray polyester powder paint inside and out

#### Accessories

See also Accessories.

Clamp Kits

Fast-Operating Clamp-Cover Junction Box Clamp Panels for Junction Boxes

Terminal Block Kit Assembly for Junction Boxes Overview Steel and Stainless Steel Window Kits

#### Modification and Customization

Hoffman excels at modifying and customizing products to your specifications. Contact your local Hoffman sales office or distributor for complete information.

Bulletin: A51LP

#### Industry Standards

UL 50, 50E Listed; Type 12, 13; File No. E27525  
 cUL Listed per CSA C22.2 No. 94; Type 12, 13; File No. E27525  
 UL 508A Listed; Type 12, 13; File No. E61997  
 cUL Listed per CSA C22.2 No. 94; Type 12, 13; File No. E61997

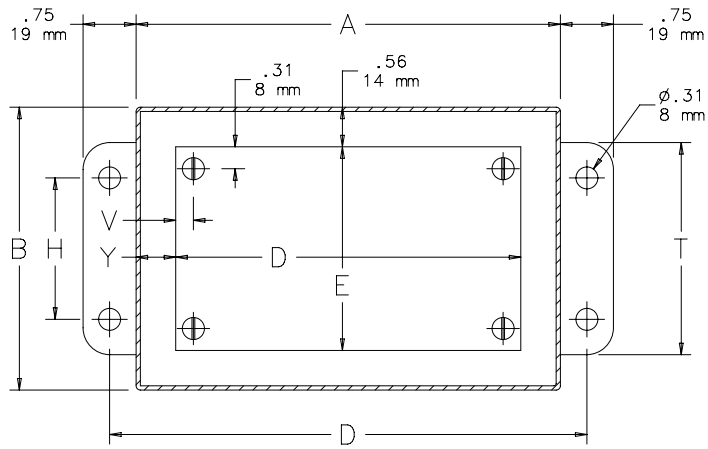
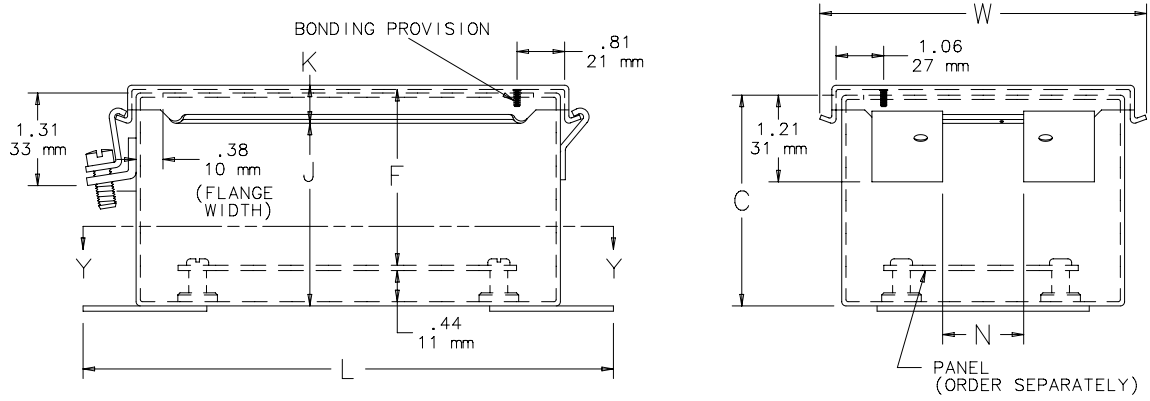
NEMA/EEMAC Type 12 and 13  
 CSA, File No. 42184: Type 12  
 IEC 60529, IP65

#### Standard Product

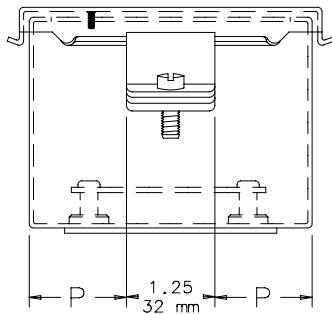
Catalog Number	AxBxC in./mm	Gauge	UL Listed	Panel	Conductive Panel	Panel Size D x E in./mm	Mounting G x H in./mm	Overall L x W in./mm	F	J	K	N	P	T	V	Y
									in./mm	in./mm	in./mm	in./mm	in./mm	in./mm	in./mm	in./mm
A404LP	4.00 x 4.00 x 3.00	16	508A	No Panel	No Panel	No Panel	4.75 x 2.00	5.50 x 4.57	—	2.62	0.54	1.31	1.38	3.00	—	—
	102 x 102 x 76								—	66	14	33	35	76	—	—
A604LP	6.00 x 4.00 x 3.00	16	508A	A6P4	A6P4G	4.88 x 2.88	6.75 x 2.00	7.50 x 4.57	2.53	2.62	0.54	1.31	1.38	3.00	0.31	0.56
	152 x 102 x 76								64	66	14	33	35	76	8	14
A806LP	8.00 x 6.00 x 3.50	14	50, 50E	A8P6	A8P6G	6.75 x 4.88	8.75 x 4.00	9.50 x 6.64	3.03	3.12	0.56	2.88	2.38	5.00	0.25	0.62
	203 x 152 x 89								76	74	14	73	60	127	6	16
A4044LP	4.00 x 4.00 x 4.00	16	508A	No Panel	No Panel	No Panel	4.75 x 2.00	5.50 x 4.57	—	3.62	0.54	1.31	1.38	3.00	—	—
	102 x 102 x 102								92	14	33	35	76	—	—	
A6044LP	6.00 x 4.00 x 4.00	16	508A	A6P4	A6P4G	4.88 x 2.88	6.75 x 2.00	7.50 x 4.57	3.53	3.62	0.54	1.31	1.38	3.00	0.31 (8)	0.56
	152 x 102 x 102								90	92	14	33	35	76	8	14
A606LP	6.00 x 6.00 x 4.00	16	50, 50E	A6P6	A6P6G	4.88 x 4.88	6.75 x 4.00	7.50 x 6.57	3.53	3.62	0.54	2.88	2.38	5.00	0.31 (8)	0.56
	152 x 152 x 102								90	92	14	73	60	127	8	14
A1008LP	10.00 x 8.00 x 4.00	14	50, 50E	A10P8	A10P8G	8.75 x 6.88	10.75 x 6.00	11.50 x 8.57	3.53	3.62	0.56	4.00	1.00	7.00	0.25 (6)	0.62
	254 x 203 x 102								90	92	14	102	25	178	6	16
A1210LP	12.00 x 10.00 x 5.00	14	50, 50E	A12P10	A12P10G	10.75 x 8.88	12.75 x 8.00	13.50 x 10.64	4.53	4.62	0.56	6.00	1.00	9.00	0.25 (6)	0.62
	305 x 254 x 127								115	117	14	152	25	229	6	16
A1412LP	14.00 x 12.00 x 6.00	14	50, 50E	A14P12	A14P12G	12.75 x 10.88	14.75 x 10.00	15.50 x 12.64	5.53	5.62	0.56	8.00	1.00	11.00	0.25 (6)	0.62
	356 x 305 x 152								140	143	14	203	25	279	6	16
A1614LP	16.00 x 14.00 x 6.00	14	50, 50E	A16P14	A16P14G	14.75 x 12.88	16.75 x 12.00	17.50 x 14.64	5.53	5.62	0.56	10.00	1.00	13.00	0.25 (6)	0.62
	406 x 356 x 152								140	143	14	254	25	330	6	16

Purchase panels separately. Optional stainless steel, conductive, composite and aluminum panels are available for most sizes.

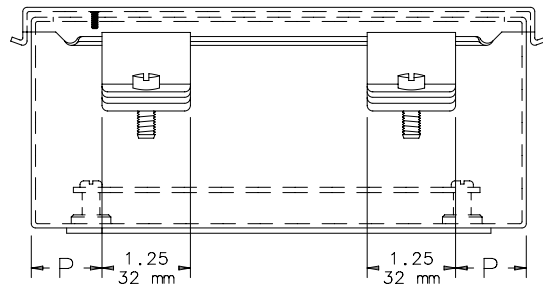
### Clamp-Cover Junction Boxes



SECTION Y-Y



$B < 8.00$  (203mm)



$B \geq 8.00$  (203mm)

C2481-C