

# Corstat Collapsible Tote

New from Corstat

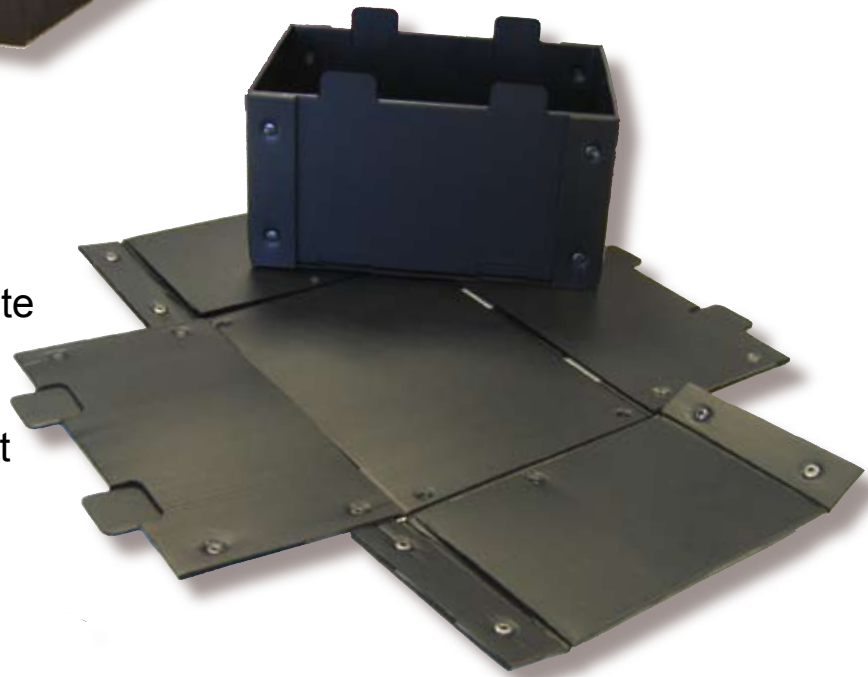


**The Collapsible Tote** bin offers a perfect solution where space is an issue for storage or returnability.

**Manufactured** from conductive corriplast the collapsible tote is light weight, robust and ESD safe storage medium.

**Supplied** in 6 stock sizes to suit corstat division sets or any standard tote bin fittings.

**With** or without lids to satisfy your specific requirements.



All dimensions are in mm unless otherwise stated

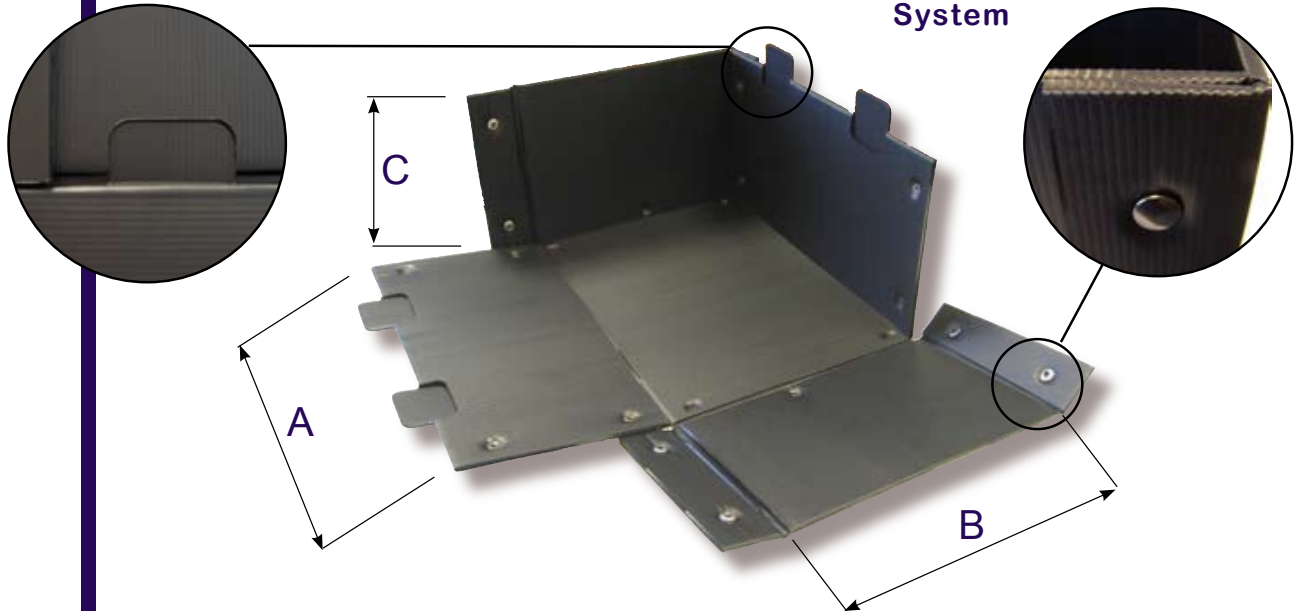
**CORSTAT**® Tel: +44 (0) 1793 855 168 Fax: +44 (0) 1793 855 209 Email: enquiries@corstat.co.uk Web: www.corstat.co.uk  
Corstat. Unit 7-9 Whitehill Industrial Park Whitehill Lane Wootton Bassett Swindon Wiltshire SN4 7DB

# Corstat Collapsible Tote

New from Corstat

Stacking Feature

Unique fastening System



Part No	Dimension A		Dimension B		Dimension C	
	External	Internal	External	Internal	External	Internal
6000-641	600	578	400	378	110	102
6000-642	600	578	400	378	220	212
6000-643	600	578	400	378	300	283
6000-431	400	378	300	276	110	102
6000-432	400	378	300	276	220	212
6000-433	400	378	300	276	300	283
<b>Lids</b>	<b>Internal Dimensions</b>					
6000-64	600 x 400 x 50					
6000-43	400 x 300 x 50					

If the stock sizes available do not match your specific requirements, we can manufacture any size as a bespoke order.

For further information or a quotation please contact our specialist ESD distributor: -



All dimensions are in mm unless otherwise stated



Tel: +44 (0) 1793 855 168 Fax: +44 (0) 1793 855 209 Email: enquiries@corstat.co.uk Web: www.corstat.co.uk  
Corstat. Unit 7-9 Whitehill Industrial Park Whitehill Lane Wootton Bassett Swindon Wiltshire SN4 7DB