

## Clamp Cover

### Clamp-Cover, Type 4X



#### Industry Standards

UL 50, 50E Listed; Type 3R, 4, 4X, 12; File No. E27525  
 cUL Listed per CSA C22.2 No 94; Type 3R, 4, 4X, 12; File No. E27525  
 UL 508A Listed; Type 3R, 4, 4X, 12; File No. E61997  
 cUL Listed per CSA C22.2 No 94; Type 3R, 4, 4X, 12; File No. E61997

NEMA/EEMAC Type 3R, 4, 4X, 12, 13  
 CSA File No. 42184: Type 4, 4X, 12  
 IEC 60529, IP66  
 Meets NEMA Type 3RX requirements

#### Application

This lightweight enclosure protects components and controls in corrosive indoor or outdoor environments.

#### Specifications

- Type 5052 H-32 aluminum, 0.080-in. (2-mm) thick
- Seams continuously welded and ground smooth
- Stainless steel screws and clamps on four sides of cover
- Oil-resistant gasket
- Weldnuts provided for mounting optional panels

#### Finish

Enclosures are unpainted. Cover and sides of body have smooth brushed finish. Optional aluminum panels are unpainted. Optional steel panels are painted white. Optional conductive panels are available.

#### Accessories

See also *Accessories*.

Industrial Corrosion Inhibitors  
 Fast-Operating Clamp-Cover Junction Box Clamp  
 Panels for Junction Boxes  
 Junction Box and Wall-Mount Enclosure Swing-Out Panel Kit  
 Terminal Block Kit Assembly for Junction Boxes Overview

#### Modification and Customization

Hoffman excels at modifying and customizing products to your specifications. Contact your local Hoffman sales office or distributor for complete information.

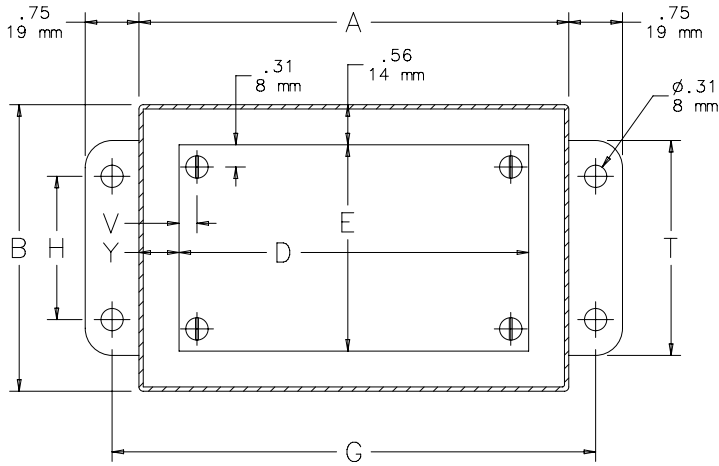
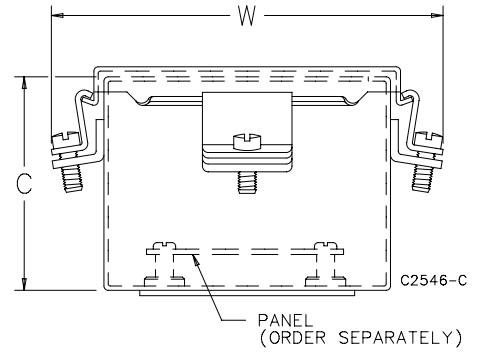
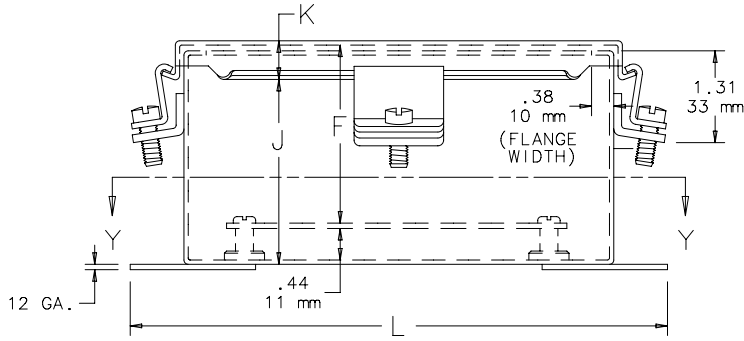
Bulletin: A51A

#### Standard Product

Catalog Number	Ax B x C in./mm	UL Listed	Aluminum Panel	Steel Panel	Conductive Panel	Panel Size	Mounting	Overall	F	J	M	N	T	V	Y
						D x E	G x H	L x W							
						in./mm	in./mm	in./mm	in./mm	in./mm	in./mm	in./mm	in./mm	in./mm	in./mm
A604NFAL	6.00 x 4.00 x 3.00	508A	A6P4AL	A6P4	A6P4G	4.88 x 2.88	6.75 x 2.00	7.50 x 5.38	2.50	2.50	1.38	2.38	3.00	0.31	0.56
	152 x 102 x 76					124 x 73	171 x 51	191 x 137	64	64	35	60	76	8	14
A806NFAL	8.00 x 6.00 x 3.50	50, 50E	A8P6AL	A8P6	A8P6G	6.75 x 4.88	8.75 x 4.00	9.50 x 7.38	3.00	3.00	2.38	3.38	5.00	0.25	0.62
	203 x 152 x 89					171 x 124	222 x 102	241 x 187	76	76	60	86	127	6	16
A606NFAL	6.00 x 6.00 x 4.00	50, 50E	A6P6AL	A6P6	A6P6G	4.88 x 4.88	6.75 x 4.00	7.50 x 7.38	3.50	3.50	2.38	2.38	5.00	0.31	0.56
	152 x 152 x 102					124 x 124	171 x 102	191 x 187	89	89	60	60	127	8	14
A1008NFAL	10.00 x 8.00 x 4.00	50, 50E	A10P8AL	A10P8	A10P8G	8.75 x 6.88	10.75 x 6.00	11.50 x 9.38	3.50	3.50	3.38	1.00	7.00	0.25	0.62
	254 x 203 x 102					222 x 175	273 x 152	292 x 238	89	89	86	25	178	6	16
A1210NFAL	12.00 x 10.00 x 5.00	50, 50E	A12P10AL	A12P10	A12P10G	10.75 x 8.88	12.75 x 8.00	13.50 x 11.38	4.50	4.50	2.00	1.50	9.00	0.25	0.62
	305 x 254 x 127					273 x 225	324 x 203	343 x 289	114	114	51	38	229	6	16
A1412NFAL	14.00 x 12.00 x 6.00	50, 50E	A14P12AL	A14P12	A14P12G	12.75 x 10.88	14.75 x 10.00	15.50 x 13.38	5.50	5.50	2.00	3.00	11.00	0.25	0.62
	356 x 305 x 152					324 x 276	375 x 254	394 x 340	140	140	51	76	279	6	16
A1614NFAL	16.00 x 14.00 x 6.00	50, 50E	A16P14AL	A16P14	A16P14G	14.75 x 12.88	16.75 x 12.00	17.50 x 15.38	5.50	5.50	3.00	1.50	13.00	0.25	0.62
	406 x 356 x 152					375 x 327	425 x 305	445 x 391	140	140	76	38	330	6	16

Purchase panels separately. Optional stainless steel, composite and aluminum panels are available for most sizes.

**Clamp Cover**



SECTION Y-Y

- NOTES: 1. Aluminum panels are .080 (2mm) thick.  
2. Steel panels are 14 gauge.  
3. Stainless steel panel screws are #10-32 pan head.

CLAMP BRACKET LOCATIONS

