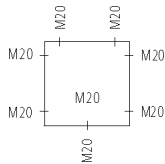


Type

**Abox 025**  
80 x 80 x 52 mm



Description

IP 65 junction box complying with DIN VDE 0606,  $U_i=690$  V, with M20 self-sealing soft entry membranes, seal range 2-16 mm, cable range 1-4 mm<sup>2</sup>

Order N°

Packing Qty

**Abox 025 L – empty, grey**

802 907 01

60 / 3

**Abox 025 – 2.5<sup>2</sup>, grey,**  
5-pole 1.5-4 mm<sup>2</sup> screw terminal  
(4 x 1.5<sup>2</sup> / 4 x 2.5<sup>2</sup> / 3 x 4<sup>2</sup>)

802 407 01

60 / 3

**Abox 025 SL – 2.5<sup>2</sup>, grey,**  
5 screwless terminals 5 x 1- 2.5 mm<sup>2</sup>

802 807 01

60 / 3



**Abox 025 L – empty, white**

802 607 01

60 / 3

**Abox 025 – 2.5<sup>2</sup>, white,**  
5-pole 1.5-4 mm<sup>2</sup> screw terminal  
(4 x 1.5<sup>2</sup> / 4 x 2.5<sup>2</sup> / 3 x 4<sup>2</sup>)

802 107 01

60 / 3

**Abox 025 SB – empty, red Top**  
to identify safety power circuits to comply with  
DIN VDE 0108

802 707 01

60 / 3

*Recommended accessories:*

IP 68 cable gland with lock-nut  
M 20 (seal range 6-12 mm)

227 420 01

50

M 20 IP 54 mini-conduit adapter, grey  
M 20 IP 54 mini-conduit adapter, white

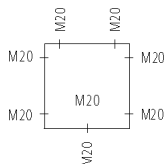
233 455 01

240 / 20

233 655 01

240 / 20

**Abox 025 AB**  
80 x 80 x 52 mm



IP 65 junction box complying with DIN VDE 0606,  $U_i=690$  V, with M20 self-sealing soft entry membranes, seal range 2-16 mm, **with external fixing lugs**

**Abox 025 L – empty,**  
grey

803 907 01

60 / 3

**Abox 025 – 2.5<sup>2</sup>,**  
grey, 5-pole 1.5-4 mm<sup>2</sup> screw terminal  
(4 x 1.5<sup>2</sup> / 4 x 2.5<sup>2</sup> / 3 x 4<sup>2</sup>)

803 407 01

60 / 3

**Abox 025 SL – 2.5<sup>2</sup>,**  
grey, 5 screwless terminals 5 x 1- 2.5<sup>2</sup>

803 807 01

60 / 3



*Recommended accessories:*

Set of lead seals

890 010 01

10

IP 68 cable gland with lock-nut  
M20 (seal range 6 - 12 mm)

227 420 01

50

M20 IP 54 mini-conduit adapter, grey

233 455 01

240 / 20

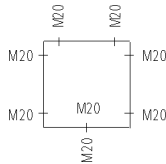
# ABOX SERIES



Type

## Abox 040

93 x 93 x 55 mm



### Description

IP 65 junction box complying with DIN VDE 0606,  $U_i=690$  V, with M20 self-sealing soft entry membranes, seal range 2-16 mm, cable range 1-4 mm<sup>2</sup>

Order N°

Packing Qty

1

### Abox 040 L – empty, grey

804 907 01

60 / 3

**Abox 040 – 4<sup>2</sup>, grey,**  
5-pole 1-4 mm<sup>2</sup> screw terminal  
(4 x 1.5<sup>2</sup> / 4 x 2.5<sup>2</sup> / 3 x 4<sup>2</sup>)

804 407 01

60 / 3

### Abox 040 L – empty, white

804 607 01

60 / 3

**Abox 040 – 4<sup>2</sup>, white,**  
5-pole 1.5-4 mm<sup>2</sup> screw terminal  
(4 x 1.5<sup>2</sup> / 4 x 2.5<sup>2</sup> / 3 x 4<sup>2</sup>)

804 107 01

60 / 3

### Recommended accessories:

IP 68 cable gland with lock-nut

227 420 01

50

M20 (seal range 6 - 12 mm)

227 421 01

30

M20 ( " 7 - 14 mm)

M 20 IP 54 mini-conduit adapter, grey

233 455 01

240 / 20

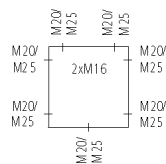
M 20 IP 54 mini-conduit adapter, white

233 655 01

240 / 20

## Abox 060

110 x 110 x 67 mm



IP 65 junction box complying with DIN VDE 0606,  $U_i=690$  V, with IP 54 extension pieces and M25 locking seals, seal range 9-18.5 mm

### Abox 060 L – empty, grey

806 907 01

24 / 2

**Abox 060 – 6<sup>2</sup>,**  
grey, 5-pole 6 mm<sup>2</sup> high-set screw terminal  
(4 x 2.5<sup>2</sup> / 4 x 4<sup>2</sup> / 3 x 6<sup>2</sup>)

806 407 01

24 / 2

### Recommended accessories:

Set of lead seals

890 010 01

10

IP 68 cable gland with lock-nut

227 420 01

50

M20 (seal range 6 - 12 mm)

227 421 01

30

M20 ( " 7 - 14 mm)

227 425 01

25

M25 ( " 7 - 16 mm)

IP 66 double membrane spouts

260 420 01

600 / 50

M20 (seal range 7 - 12 mm)

260 425 01

600 / 50

M25 ( " 9 - 16 mm)

NS 35 DIN rail

81 mm

198 081 01

1

Mounting plate from insulating material

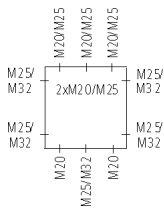
83 x 83 mm

895 006 01

1

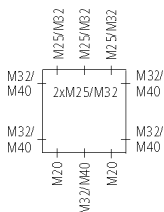
Type

**Abox 100**  
140 x 140 x 79 mm



Description	Order N°	Packing Qty	
IP 65 junction box complying with DIN VDE 0606, $U_i=690$ V, with IP 54 extension pieces and M32 locking seals, seal range 11- 23 mm			
<b>Abox 100 L – empty</b> , grey	810 910 01	20 / 2	
<b>Abox 100 – 10<sup>2</sup></b> , grey, 5-pole 10 mm <sup>2</sup> high-set screw terminal (4 x 4 <sup>2</sup> / 4 x 6 <sup>2</sup> / 4 x 10 <sup>2</sup> )	810 410 01	20 / 2	
<i>Recommended accessories:</i> Set of lead seals	890 010 01	10	
IP 68 cable gland with lock-nut M20 (seal range 6 - 12 mm)	227 420 01	50	
M20 ( " 7 - 14 mm)	227 421 01	30	
M25 ( " 7 - 16 mm)	227 425 01	25	
M32 ( " 11 - 21 mm)	227 432 01	10	
IP 66 double membrane spouts M25 (seal range 9 - 16 mm)	260 425 01	600 / 50	
M32 ( " 14 - 21 mm)	260 432 01	300 / 25	
NS 35 DIN rail	106 mm	198 106 01	1
Mounting plate from insulating material	109 x 109 mm	895 010 01	1

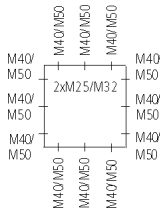
**Abox 160**  
180 x 180 x 91 mm



IP 65 junction box complying with DIN VDE 0606, $U_i=690$ V, with IP 54 extension pieces and M40 locking seals, seal range 17-30 mm, with lead seal set			
<b>Abox 160 L – empty</b> , grey	816 910 01	10 / 1	
<b>Abox 160 – 16<sup>2</sup></b> , grey, 5-pole 16 mm <sup>2</sup> high-set screw terminals (4 x 6 <sup>2</sup> / 4 x 10 <sup>2</sup> / 4 x 16 <sup>2</sup> )	816 410 01	10 / 1	
<i>Recommended accessories:</i> IP 68 cable gland with lock-nut M20 (seal range 6 - 12 mm)	227 420 01	50	
M20 ( " 7 - 14 mm)	227 421 01	30	
M25 ( " 7 - 16 mm)	227 425 01	25	
M32 ( " 11 - 21 mm)	227 432 01	10	
M40 ( " 16 - 28 mm)	227 440 01	5	
IP 66 double membrane spouts M25 (seal range 9 - 16 mm)	260 425 01	600 / 50	
M32 ( " 14 - 21 mm)	260 432 01	300 / 25	
NS 35 DIN rail	144 mm	894 016 01	1
Mounting plate from insulating material	149 x 149 mm	895 016 01	1

**Type**

**Abox 350**  
250 x 250 x 115 mm



**Description**

IP 65 junction box complying with DIN VDE 0606,  $U_i=690$  V, with IP 54 extension pieces and M40 locking seals, seal range 17- 30 mm, with lead seal set

**Abox 350 L – empty,**  
grey

**Abox 350 – 35<sup>2</sup>,**  
grey, 5-pole 35 mm<sup>2</sup> high-set screw terminal  
(4 x 16<sup>2</sup> / 4 x 25<sup>2</sup> / 4 x 35<sup>2</sup>)

*Recommended accessories:*

IP 68 cable gland with lock-nut  
M40 (seal range 16 - 28 mm)  
M50 ( " 21 - 34.5 mm)

NS 35 DIN rail 216 mm  
Mounting plate from insulating material 217 x 217 mm

**Order N°**      **Packing Qty**

835 910 01      4 / 1

835 410 01      4 / 1

227 440 01      5

227 450 01      5

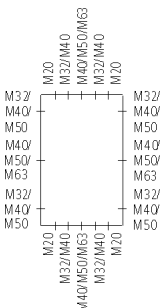
894 035 01      1

895 035 01      1

1

**Abox 700**

450 x 300 x 132 mm



IP 65 junction box,  $U_i=690$  V, with 3 twist nipples and lock-nut, IP 54, M63, seal range 24-43 mm, may be sealed with standard leads

**Abox 700 L – empty,**  
grey

**Abox 700 – 70<sup>2</sup>,**  
grey, 4 terminal blocks 4 x 70 mm<sup>2</sup>

*Recommended accessories:*

IP 68 cable gland with lock-nut  
M40 (seal range 16 - 28 mm)  
M50 ( " 21 - 34.5 mm)  
M63 ( " 32 - 44.5 mm)

NS 35 DIN rail 216 mm  
Mounting plate from insulating material 390 x 240 mm

Adapter for 5-pole connection 1 Block 4 x 70 mm<sup>2</sup>

870 910 01      1

870 410 01      1

227 440 01      5

227 450 01      5

227 463 01      5

562 035 01      1

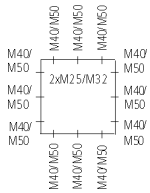
795 003 01      1

840 070 01      1

**NEW**

Type

**Abox HA 250**  
250 x 250 x 115 mm



Description

IP 65 interface box complying with DIN VDE 0606,  $U_i=400$  V, with 25 mm<sup>2</sup> main cable branching terminal, IP 54 adapters and M40 locking seals, M50 twist nipple, 4-pole 25 mm<sup>2</sup> screw terminal, 2 x 25 mm<sup>2</sup> entry per pole, 4 x 16 mm<sup>2</sup> exit per pole, with lead seal set

grey

**NEW**

*Recommended accessories:*

IP 68 cable gland with lock-nut  
M40 (seal range 16 - 28 mm)  
M50 ( " 21 - 34.5 mm)

Order N°

Packing Qty

480 425 01

4 / 1

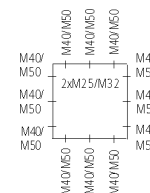
227 440 01

5

227 450 01

5

**Abox HA 350**  
250 x 250 x 115 mm



IP 65 interface box complying with DIN VDE 0606,  $U_i=400$  V, with 35 mm<sup>2</sup> main cable branching terminal, IP 54 adapters and M 40 locking seals, M 50 twist nipple, 4-pole 35 mm<sup>2</sup> screwterminal, 2 x 35 mm<sup>2</sup> entry per pole, 4 x 35 mm<sup>2</sup> exit per pole, with lead seal set

grey

**NEW**

*Recommended accessories:*

IP 68 cable gland with lock-nut  
M40 (seal range 16 - 28 mm)  
M50 ( " 21 - 34.5 mm)

480 435 01

4 / 1

227 440 01

5

227 450 01

5

Type

## Abox terminals



Description

Junction terminal complying with DIN EN 60998 / VDE 0613,  
U<sub>i</sub>=690 V,

for

Abox/Nautic 025/040	5-pole-1-4 mm <sup>2</sup> (4 x 1.5 <sup>2</sup> / 4 x 2.5 <sup>2</sup> / 3 x 4 <sup>2</sup> )	840 004 01	10
Abox/Nautic 060	5-pole-6 mm <sup>2</sup> (4 x 2.5 <sup>2</sup> / 4 x 4 <sup>2</sup> / 3 x 6 <sup>2</sup> )	840 006 01	5
Abox/Nautic 100	5-pole-10 mm <sup>2</sup> (4 x 4 <sup>2</sup> / 4 x 6 <sup>2</sup> / 4 x 10 <sup>2</sup> )	840 010 01	5
Abox/Nautic 160	5-pole-16 mm <sup>2</sup> (4 x 6 <sup>2</sup> / 4 x 10 <sup>2</sup> / 4 x 16 <sup>2</sup> )	840 016 01	2
Abox/Nautic 350	5-pole-35 mm <sup>2</sup> (4 x 16 <sup>2</sup> / 4 x 25 <sup>2</sup> / 4 x 35 <sup>2</sup> )	840 035 01	1
Abox/Nautic 700*	1-pole-70 mm <sup>2</sup>	840 070 01	1
Abox 1500	1-pole-150 mm <sup>2</sup> *	076 125 01	1
Abox 2400	1-pole-240 mm <sup>2</sup> *	076 140 01	1
Abox/Nautic 040 Voltage terminal	16/6 <sup>2</sup>	462 166 01	10

Order N°

Packing Qty

1

\*VDE approval in preparation

## Lead seal set



Lead seal set for

Abox / Nautic 025 to 100 junction boxes  
(from Abox / Nautic 160 can be sealed with standard leads)

890 010 01

10

## Cable entries

for Nautic 700 / 1500 / 2400



Plug-in type cable entry with pleated rubber for cables under tension up to 75 mm diameter

Width 320 mm

2 x 75 mm Ø

073 032 01

5 / 1

Width 440 mm

3 x 75 mm Ø

073 043 01

5 / 1

## Cleats

Nautic 700 / 1500 / 2400



Cleats for cables up to 75 mm

Width 320 mm for

1 x 75 mm

073 003 01

10 / 1

Width 440 mm for

1 x 75 mm

073 004 01

5 / 1

Recommended accessories:

additional clamp for 2nd cable up to 75 mm

073 075 01

50 / 1

## DIN rails

NS 35



35 mm DIN rail

incl. fixing screws, for

Abox 060

Length 81 mm

198 081 01

1

Abox 100

Length 106 mm

198 106 01

1

Abox 160

Length 144 mm

894 016 01

1

Abox 350

Length 216 mm

894 035 01

1

Abox 700 (with plastic bearer)

Length 216 mm

562 035 01

1

## Mounting plates



Mounting plate from insulating material for installing devices with base fixing, incl. fixing screws, for

Abox 060

83 x 83 mm

895 006 01

1

Abox 100

109 x 109 mm

895 010 01

1

Abox 160

149 x 149 mm

895 016 01

1

Abox 350

217 x 217 mm

895 035 01

1

Abox 700

390 x 240 mm

795 003 01

1