

Junction Boxes

HP 70 to HP 190

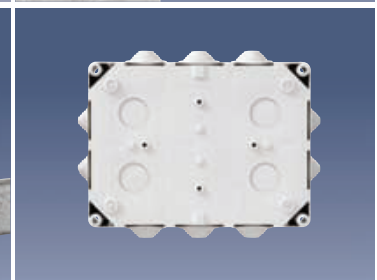
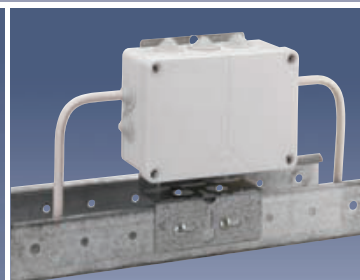
IP 55



Overview of the characteristics of this HP series

Use	Weak acid	Strong acid	Weak alkali	Strong alkali	Alcohol	Benzin	Benzene	Mineral oil	Diesel	Ammonia	Vegetable oil	Animal oil	Free of halogen, heavy metal, PVC and silicone
HP-Enclosures	●	▶	●	▶	▶	▶	▶	▶	▶	●	●	●	yes

- = resistant
- ▶ = partially-resistant
- ⊗ = not-resistant



- 6 sizes
- Assembly on wood or other inflammable materials
- Assembled stepped nipple
- Connection diameter 1.5 mm² to 10 mm²
- Entry positions also suitable for metric add-on accessories 2 to 10 mm²

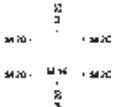
- Suitable for the installation**
- In damp and wet areas and rooms
 - In buildings where there are crowds of people
 - In temporary buildings, vehicles and caravans

HP 70

75 x 75 x 42 mm
Interior dimensions:
68 x 68 x 38 mm



IP 55



Entries

Description

Junction box according to E DIN IEC 60998-2-5, $U_i=400$ V, 3 recessed stepped nipples, and 2 loose ones enclosed, seal range 5 to 16 mm, for terminals up to 2.5 mm²

Order No.

Packing Qty

HP 70 - L
grey, without terminals

320 970 01

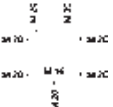
60/1

HP 80

85 x 85 x 42 mm
Interior dimensions:
78 x 78 x 38 mm



IP 55



Entries

Junction box according to E DIN IEC 60998-2-5, $U_i=400$ V, 7 recessed stepped nipples, seal range 5 to 16 mm, for terminals up to 2.5 mm²

HP 80 - L
grey, without terminals

322 980 01

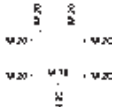
50/1

HP 90

90 x 90 x 45 mm
Interior dimensions:
82 x 82 x 38 mm



IP 55



Entries

Junction box according to E DIN IEC 60998-2-5, $U_i=400$ V, 7 recessed stepped nipples, seal range 5 to 16 mm, for terminals up to 4 mm²

HP 90 - L
grey, without terminals

325 990 01

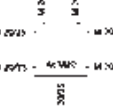
40/1

HP 100

113 x 113 x 58 mm
Interior dimensions:
103.5 x 103.5 x 32 mm



IP 55



Entries

Junction box according to E DIN IEC 60998-2-5, $U_i=690$ V, 7 recessed stepped nipples, seal range 5 to 21 mm, for terminals up to 10 mm²

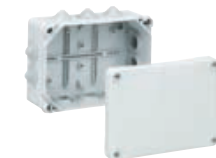
HP 100 - L
grey, without terminals

326 900 01

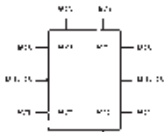
20/1

HP 150

164 x 119 x 77 mm
Interior dimensions:
155 x 110 x 70 mm



IP 55



Entries

Junction box $U_i=690$ V, 10 recessed stepped nipples, seal range 5 to 21 mm

HP 150 - L
grey, without terminals

326 950 01

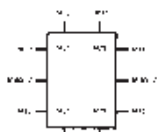
12/1

HP 190

199 x 149 x 77 mm
Interior dimensions:
190 x 140 x 70 mm



IP 55



Entries

Junction box $U_i=690$ V, 10 recessed stepped nipples, seal range 13 to 26.5 mm

HP 190 - L
grey, without terminals

326 990 01

8/1