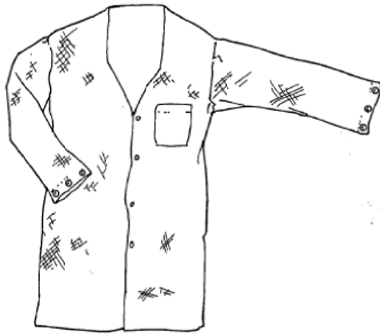


ALL RIGHTS RESERVED. NO PORTION OF THIS PUBLICATION, WHETHER IN WHOLE OR IN PART CAN BE REPRODUCED WITHOUT THE EXPRESS WRITTEN CONSENT OF SPC TECHNOLOGY.

REVISIONS				DOC. NO. SPC-F005 * Effective: 12/21/98 * DCP No: 680				
DCP #	REV	DESCRIPTION	DRAWN	DATE	CHECKD	DATE	APPRVD	DATE
2037	A	RELEASED	JYC	5/5/10	JYC	5/5/10	JYC	5/5/10



**SPECIFICATIONS**

- Fabric 91% Polyester / 9% Carbon
- Weight 2.25 oz.
- Color Blue
- Length Jacket (Short)
- Collar No
- Sleeve Open cuff, with adjustable sleeve snaps
- Pocket 1
- Resistance <math> < 1 \times 10^{11}</math> ohms per ANSI/ESD STM2.1

**PACKAGING**

- Packed with Duratool label on outer box



Part Number	Size
MC35659	S
MC35660	M
MC35661	L
MC35662	XL
MC35663	XXL

**DISCLAIMER:**  
 ALL STATEMENTS AND TECHNICAL INFORMATION CONTAINED HEREIN ARE BASED UPON INFORMATION AND/OR TESTS WE BELIEVE TO BE ACCURATE AND RELIABLE. SINCE CONDITIONS OF USE ARE BEYOND OUR CONTROL, THE USER SHALL DETERMINE THE SUITABILITY OF THE PRODUCT FOR THE INTENDED USE AND ASSUME ALL RISK AND LIABILITY WHATSOEVER IN CONNECTION THEREWITH.

UNLESS OTHERWISE SPECIFIED, DIMENSIONS ARE FOR REFERENCE PURPOSES ONLY.	DRAWN BY:	DATE:
	Jerrold Chen	5/5/2010
	CHECKED BY:	DATE:
	Jerrold Chen	5/5/2010
	APPROVED BY:	DATE:
	Jerrold Chen	5/5/2010

<b>DURATOOL</b>			
DRAWING TITLE: ESD Smock, Blue, No Collar, Open Cuff w/ Snaps, 1 Pocket			
SIZE	DWG. NO.	ELECTRONIC FILE	REV
A	TA-1227	Ta-1227.DWG	A
SCALE: NTS	U.O.M.: INCHES [mm]	SHEET: 1 OF 1	