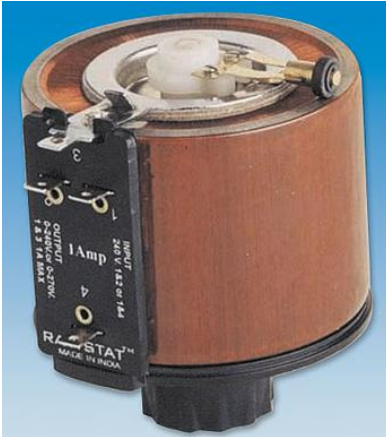


# Variable Transformers

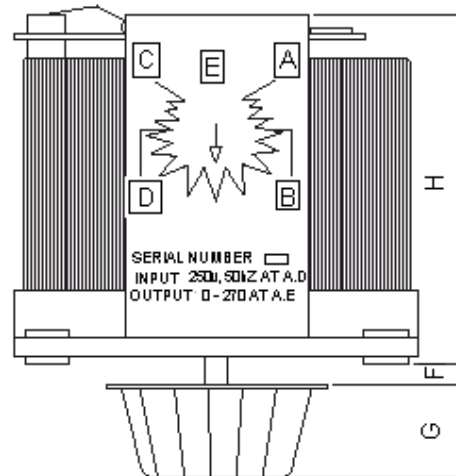
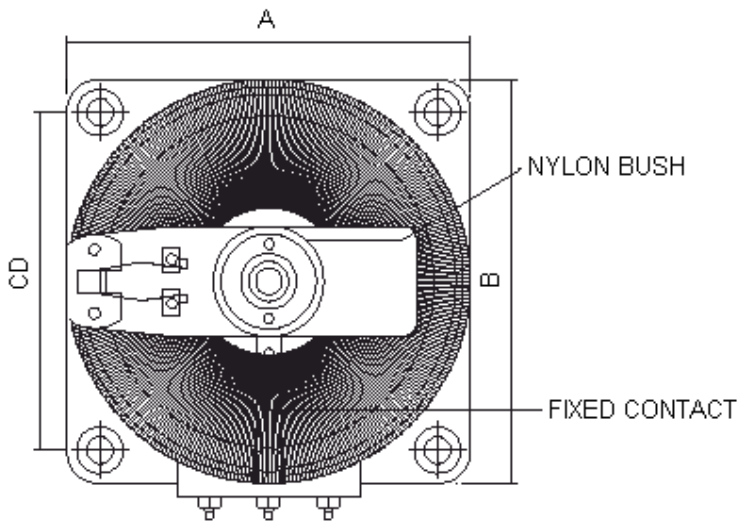
## Single Phase - 1A to 28A

**multicomp**

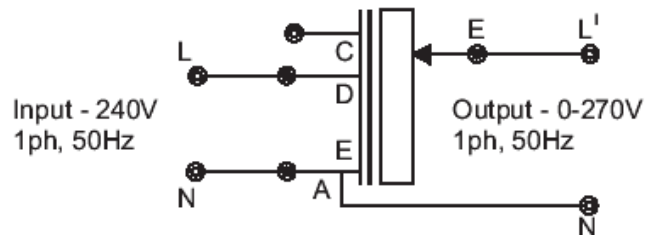


### Features:

- Low cost.
  - Precision wound.
  - Rugged construction.
  - Standard connections.
  - Simple to use.
  - Easy to install.
  - Open Wound.
- Input voltage : 240V ac.  
Output voltage : 0 to 240/270V ac.



### Single Phase Variac



Connection Arrangement

**multicomp**

# Variable Transformers

## Single Phase - 1A to 28A



### Installation and Safety Instructions:

1. Installation, commissioning and maintenance should only be carried out by suitably qualified personnel.
2. Read all of the instructions before you use the transformer.
3. The input must always be applied across the appropriate terminals. Never connect the transformer in series with the load.
4. The transformer should be properly earthed using the earth stud or earth terminal.
5. This transformer operates at mains Voltage. DO NOT EXCEED THE MAXIMUM VOLTAGE AND CURRENT RATING.
6. This transformer is not designed to provide mains isolation.
7. Please note that when connected to the electrical supply the terminal brushes and tracks surface are at mains voltage which is potentially lethal.
8. The carbon brushes should be inspected for damage or wear, faulty or over worn brushes will result in damage to the windings.

### Specifications

Maximum Current Rating (A)	Maximum VA	Height (Excluding Knob) (H)	Overall Width (A)	Overall Diameter (B)	Fixing Centres (C x D)	Diameter Fixing Hole	E	F	Height of the Knob (G)	Approximate Weight (Kg)	Part Number
1	240	99	83	99	-	-	-	-	20	1.550	MC1F-1
2	480	95	110		92 x 92	7.5	10	6	25	2.900	MC2F-1
3	720	115								3.300	MC3F-1
4	960	102	175	146 x 146	10	25	5.900		MC4F-1		
6	1440	110					6.800		MC6F-1		
10	1920	130					8.100		MC8F-1		
	2400	135	225	176 x 176	11	10	9.000		MC10F-1		
15	3600						12.000	MC15F-1			
20	4800	145	300	238 x 238	13	60	15.000	MC20F-1			
28	6720	160					22.000	MC28F-1			

Dimensions : Millimetres



# Variable Transformers

## Single Phase - 1A to 28A



### Notes:

### International Sales Offices:



**AUSTRALIA** – Farnell InOne  
Tel No: ++ 61 2 9645 8888  
Fax No: ++ 61 2 9644 7898



**FINLAND** – Farnell InOne  
Tel No: ++ 358 9 560 7780  
Fax No: ++ 358 9 345 5411



**NETHERLANDS** – Farnell InOne  
Tel No: ++ 31 30 241 7373  
Fax No: ++ 31 30 241 7333



**SWITZERLAND** – Farnell InOne  
Tel No: ++ 41 1 204 64 64  
Fax No: ++ 41 1 204 64 54



**AUSTRIA** – Farnell InOne  
Tel No: ++ 43 662 2180 680  
Fax No: ++ 43 662 2180 670



**FRANCE** – Farnell InOne  
Tel No: ++ 49 89 61 39 39 39  
Fax No: ++ 33 474 68 99 90



**NEW ZEALAND** – Farnell InOne  
Tel No: ++ 64 9 357 0646  
Fax No: ++ 64 9 357 0656



**UK** – Farnell InOne  
Tel No: ++ 44 8701 200 200  
Fax No: ++ 44 8701 200 201



**BELGIUM** – Farnell InOne  
Tel No: ++ 32 3 475 2810  
Fax No: ++ 32 3 227 3648



**GERMANY** – Farnell InOne  
Tel No: ++ 49 89 61 39 39 39  
Fax No: ++ 49 89 613 59 01



**NORWAY** – Farnell InOne  
Tel No: ++ 45 44 53 66 66  
Fax No: ++ 45 44 53 66 02



**UK** – BuckHickman InOne  
++ 44 8450 510 150  
++ 44 8450 510 130



**BRAZIL** – Farnell-Newark InOne  
Tel No: ++ 55 11 4066 9400  
Fax No: ++ 55 11 4066 9410



**HONG KONG** –  
Farnell-Newark InOne  
Tel No: ++ 852 2268 9888  
Fax No: ++ 852 2268 9899



**PORTUGAL** – Farnell InOne  
Tel No: ++ 34 93 475 8804  
Fax No: ++ 34 93 474 5288



**UK** – CPC  
++ 44 8701 202 530  
++ 44 8701 202 531



**CHINA** – Farnell-Newark InOne  
Tel No: ++86 10 6238 5152  
Fax No: ++86 10 6238 5022



**IRELAND** – Farnell InOne  
Tel No: ++ 353 1 830 9277  
Fax No: ++ 353 1 830 9016



**SINGAPORE** –  
Farnell-Newark InOne  
Tel No: ++ 65 6788 0200  
Fax No: ++ 65 6788 0300



**EXPORT** – Farnell InOne  
Tel No: ++ 44 8701 200 208  
Fax No: ++ 44 8701 200 209

For enquiries from all other markets



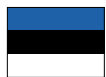
**DENMARK** – Farnell InOne  
Tel No: ++ 45 44 53 66 44  
Fax No: ++ 45 44 53 66 06



**ITALY** – Farnell InOne  
Tel No: ++ 39 02 93 995 200  
Fax No: ++ 39 02 93 995 300



**SPAIN** – Farnell InOne  
Tel No: ++ 34 93 475 8805  
Fax No: ++ 34 93 474 5107



**ESTONIA** – Farnell InOne  
Tel No: ++ 358 9 560 7780  
Fax No: ++ 358 9 345 5411



**MALAYSIA** –  
Farnell-Newark InOne  
Tel No: ++ 60 3 7873 8000  
Fax No: ++ 60 3 7873 7000



**SWEDEN** – Farnell InOne  
Tel No: ++ 46 8 730 50 00  
Fax No: ++ 46 8 83 52 62

<http://www.farnellinone.com>

<http://www.buckhickmaninone.com>

<http://www.cpc.co.uk>

**Disclaimer** This data sheet and its contents (the "Information") belong to the Premier Farnell Group (the "Group") or are licensed to it. No licence is granted for the use of it other than for information purposes in connection with the products to which it relates. No licence of any intellectual property rights is granted. The Information is subject to change without notice and replaces all data sheets previously supplied. The Information supplied is believed to be accurate but the Group assumes no responsibility for its accuracy or completeness, any error in or omission from it or for any use made of it. Users of this data sheet should check for themselves the Information and the suitability of the products for their purpose and not make any assumptions based on information included or omitted. Liability for loss or damage resulting from any reliance on the Information or use of it (including liability resulting from negligence or where the Group was aware of the possibility of such loss or damage arising) is excluded. This will not operate to limit or restrict the Group's liability for death or personal injury resulting from its negligence. Multicomp is the registered trademark of the Group. © Premier Farnell plc 2004.

