



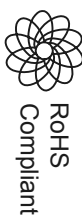
SPC
TECHNOLOGY

ALL RIGHTS RESERVED. NO PORTION OF THIS PUBLICATION, WHETHER IN WHOLE OR IN PART CAN BE REPRODUCED WITHOUT THE EXPRESS WRITTEN CONSENT OF SPC TECHNOLOGY.
SPC-F005.DWG

REVISIONS

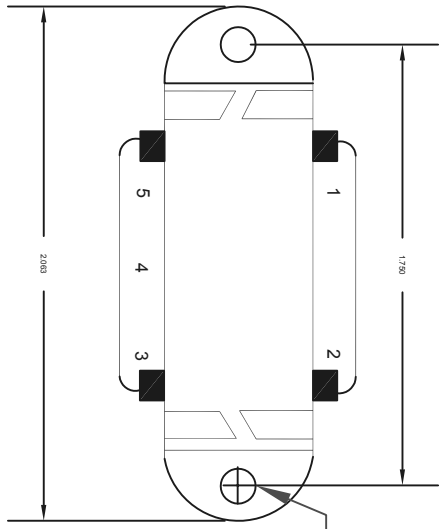
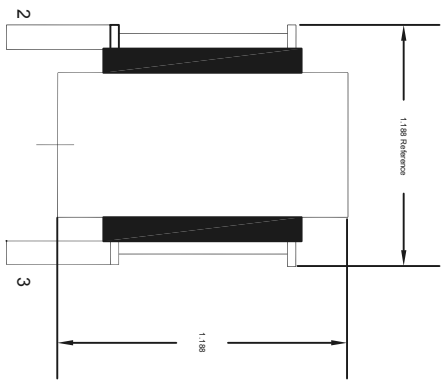
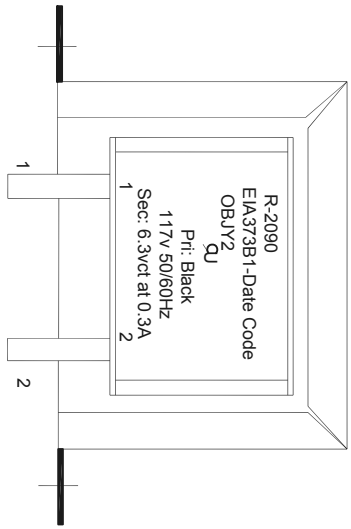
DCP #	REV	DESCRIPTION	DRAWN	DATE	CHECKD	DATE	APPRVD	DATE
			VEE	13-08-10	JAG	18-08-10	XXX	27-08-10

DOC. NO. SPC-F005 * Effective: 7/8/02 * DCP No: 1398

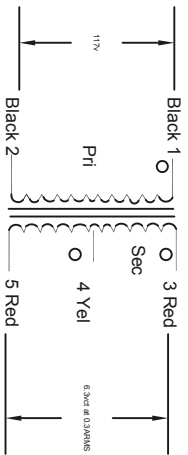


Electrical Characteristics:

- Primary:**
117V ±15%, Frequency = 60Hz only
- Secondary:**
6.3vct at 0.3ARMS
Regulation: 34.1% (Approx)
- Transformer Isolation:**
Pri/Sec 1500V
Wind/Core 2500V



- Pri Leads:**
22 GA UL10115 105C PVC
- Sec Leads:**
22 GA UL10115 105C PVC
- Lead Length:**
6.000" ±0.500"
- Strip Length:**
0.500" ±0.125"



Part Number Table

Description	Part Number
Control and Filament Transformer	SPC20978

Dimensions : Inches

TOLERANCES:

UNLESS OTHERWISE SPECIFIED, DIMENSIONS ARE FOR REFERENCE PURPOSES ONLY.

DRAWN BY: VEE
CHECKED BY: JAG
APPROVED BY: XXX

DATE: 13-08-10
DATE: 18-08-10
DATE: 27-08-10

DRAWING TITLE: Control and Filament Transformer

SCALE: NTS

SIZE DWG. NO. XXX
ELECTRONIC FILE 81n5372
REV A

U.O.M.: INCHES [mm]

SHEET: 1 OF 1