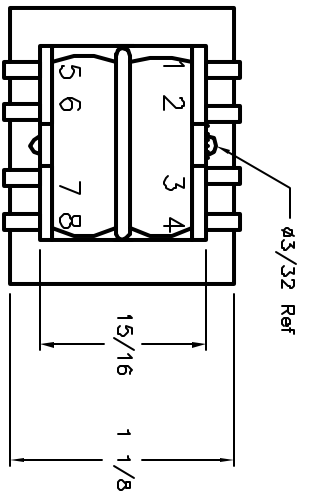
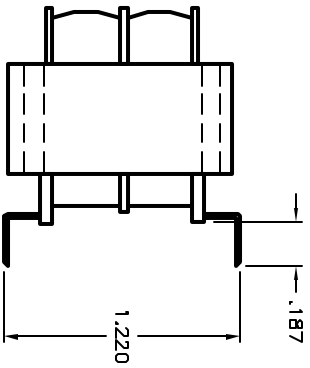
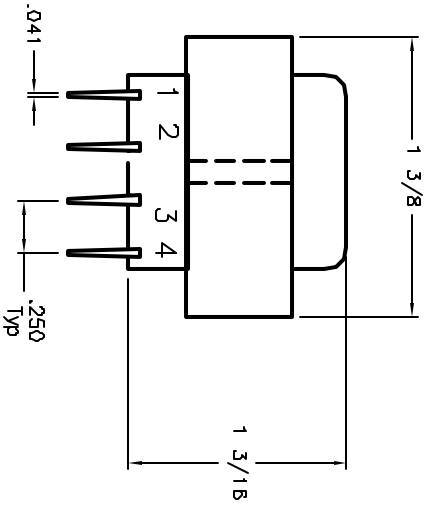
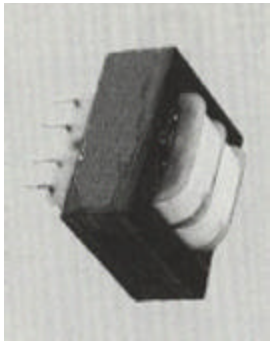


ALL RIGHTS RESERVED. NO PORTION OF THIS PUBLICATION, WHETHER IN WHOLE OR IN PART, CAN BE REPRODUCED WITHOUT THE EXPRESS WRITTEN CONSENT OF SPC TECHNOLOGY.

SPC-PD09.DWG

REVISIONS		DWG. NO. SPC-PD09	Effective 7/8/02	DWG. No. 1308			
DWG #	REV	DESCRIPTION	DATE	CHECKD	DATE	APPRVD	DATE
1977	A	Released	JWM 02/1/06	JN	07/22/08	JN	07/22/08



DWG. NO.	DATE	CHECKD	DATE	APPRVD	DATE
JWM	02/1/06	JN	07/22/08	JN	07/22/08

Electrical Characteristics

Primary

Pri #1 115v +/-15%REQ: (50, 60)Hz

Pri #2 115v +/-15%REQ: (50, 60)Hz

Secondary

Series 36vct @ 65mARMS

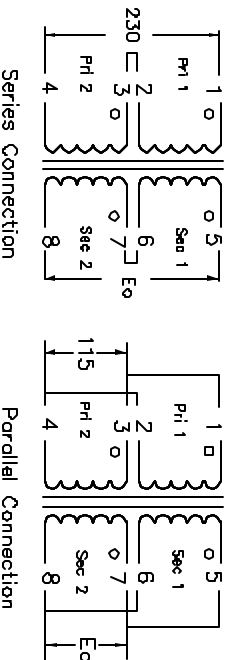
Parallel 18v @ 130mARMS

REGULATION: 26.8% APPROX

Transformer Isolation

Pri/Pri 500v Pri/Sec 2500v

Sec/Sec 500v Wind/Core 2500v



TOLERANCES:

DISCLAIMER: ALL STATEMENTS AND TECHNICAL INFORMATION CONTAINED HEREIN ARE BASED UPON INFORMATION AND/OR TESTS WE BELIEVE TO BE ACCURATE AND RELIABLE. SINCE CONDITIONS OF USE ARE BEYOND OUR CONTROL, THE USER SHALL DETERMINE THE SUITABILITY OF THE PRODUCT FOR THE INTENDED USE AND ASSUME ALL RISK AND LIABILITY WHATSOEVER IN CONNECTION THEREWITH.

DRAWN BY:

Jeff McVicker

DATE:

2/1/06

CHECKED BY:

Jason Nash

DATE:

07/22/08

APPROVED BY:

Jason Nash

DATE:

07/22/08

DRAWING TITLE:

Transformer, PC Board, Split bobbin

SIZE DWG. NO.

A SPC20973

ELECTRONIC FILE

10M557.dwg

REV

A

SCALE: NTS U.O.M.: INCHES [mm]

SHEET: 1 OF 1