

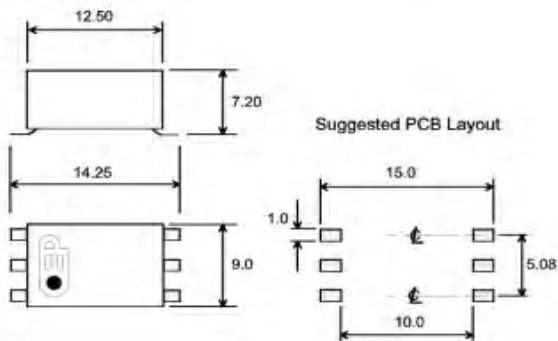
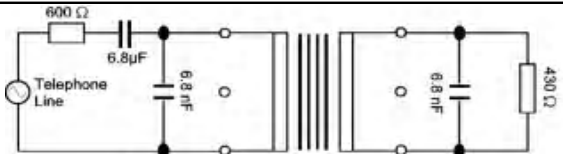


Ultra low profile Surface Mount 600:600 Ohm Line Matching Transformer.  
 Designed for use in data transmission circuits where the line d.c. is diverted from windings by a choke or solid state device. When used in this way it will satisfy the requirements of BS6305.

Resin encapsulated in a black flame retardant ABS case



Part No.	<b>OEP8000</b>	<b>OEP8034</b>
	<b>V22bis/V32bis</b>	<b>V34</b>
Turns Ratio	<b>1:1</b>	
Nominal Impedance	<b>600 Ω</b>	
DCR per winding	<b>111 Ω (±15%)</b>	
Frequency response	<b>±0.2dB (200Hz - 4kHz)</b>	
Isolation, 50Hz	<b>&gt;3.3kVrms min.</b>	
Return Loss	<b>-18dB min (200Hz- 4kHz)</b>	
Insertion Loss	<b>4dB max (2kHz/600 Ω)</b>	
	<b>2dB max (2kHz/430 Ω)</b>	
Longitudinal Balance	<b>&gt;80dB</b>	
THD (typical) 600Hz	<b>-89dBm</b>	<b>-100dBm</b>
Saturation	<b>&lt;10Vrms, 65V peak. 50Hz</b>	



<< Click on thumbnail for larger pin view