



SPC
TECHNOLOGY

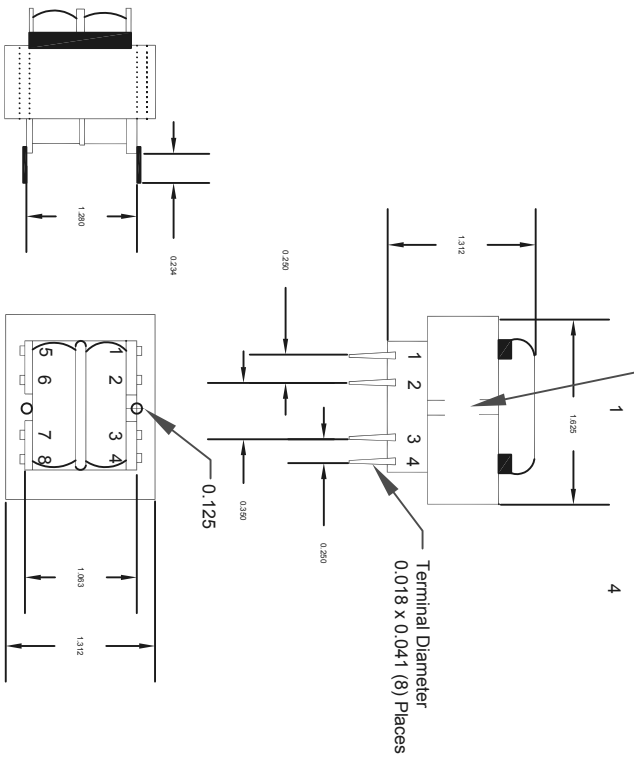
ALL RIGHTS RESERVED. NO PORTION OF THIS PUBLICATION, WHETHER IN WHOLE OR IN PART CAN BE REPRODUCED WITHOUT THE EXPRESS WRITTEN CONSENT OF SPC TECHNOLOGY.

SPC-F005.DWG

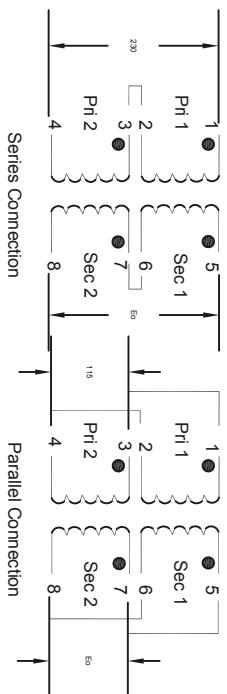
REVISIONS		DOC. NO.	SPC-F005	Effective:	7/8/02	DCP No:	1398		
DCP #	REV	DESCRIPTION		DRAWN	DATE	CHECKD	DATE	APPRVD	DATE
		VEE	11-08-10	JAG	14-08-10	XXX	25-08-10		



XBD-424
EIA37381-Date Code
OBYJZ
CU



Dimensions : Inches



Electrical Characteristics:
Primary:
 Pri #1 115v ±15% REQ: (50,60)Hz
 Pri #2 115v ±15% REQ: (50,60)Hz
Secondary:
 Series : 24vdc at 0.250ARMS
 Parallel : 12v at 0.500ARMS
 Regulation : 27% approximately
Transformer Isolation:
 Pri/Pri 500v Pri/Sec 2500v
 Sec/Sec 500v WInd/Core 2500v

Part Number Table

Description	Part Number
PC Board Transformer	SPC20960

TOLERANCES:

UNLESS OTHERWISE SPECIFIED, DIMENSIONS ARE FOR REFERENCE PURPOSES ONLY.

DRAWN BY:

VEE

DATE:

11-08-10

DRAWING TITLE:

PC Board Transformer

DATE:

14-08-10

SCALE:

NTS

SHEET:

1 OF 1

DISCLAIMER:
 ALL STATEMENTS AND TECHNICAL INFORMATION CONTAINED HEREIN ARE BASED UPON INFORMATION AND/OR TESTS WE BELIEVE TO BE ACCURATE AND RELIABLE. SINCE CONDITIONS OF USE ARE BEYOND OUR CONTROL, THE USER SHALL DETERMINE THE SUITABILITY OF THE PRODUCT FOR THE INTENDED USE AND ASSUME ALL RISK AND LIABILITY WHATSOEVER IN CONNECTION THEREWITH.

XXX

DATE:

25-08-10

U.O.M.:

INCHES [mm]

SHEET:

1 OF 1