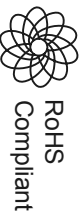




SPC
TECHNOLOGY

ALL RIGHTS RESERVED. NO PORTION OF THIS PUBLICATION, WHETHER IN WHOLE OR IN PART CAN BE REPRODUCED WITHOUT THE EXPRESS WRITTEN CONSENT OF SPC TECHNOLOGY.
SPC-F005.DWG

REVISIONS		DOC. NO. SPC-F005	Effective: 7/8/02	DCP No: 1398				
DCP #	REV	DESCRIPTION	DRAWN	DATE	CHECKD	DATE	APPRVD	DATE
			VEE	11-08-10	JAG	14-08-10	XXX	25-08-10



Electrical characteristics:

Primary : 115 ±10% REQ. (50,60) Hz

Secondary:

Series 12.6vct at 500mARMS

Parallel : 6.3V at 1.0ARMS

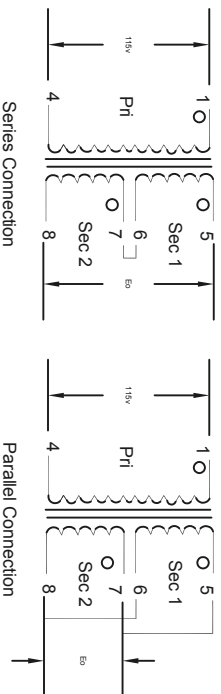
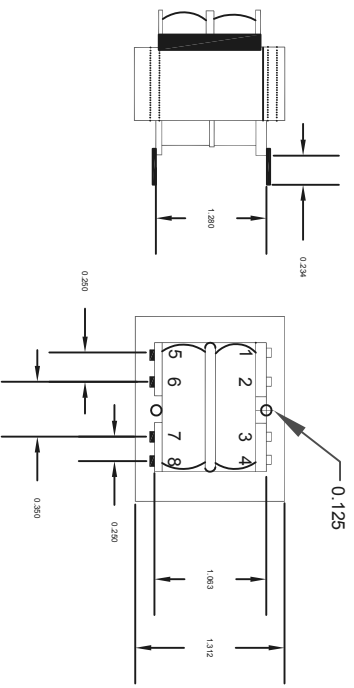
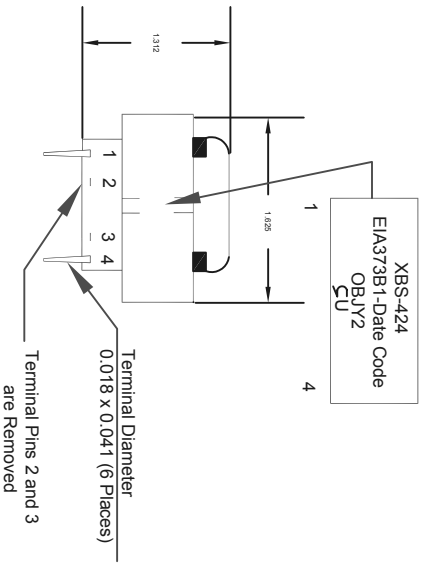
Regulation : 27.2% approximately

Transformer Isolation:

Pri/Sec : 2500V

Sec/Sec : 500V

Wind/Core : 2500V



Part Number Table

Description	Part Number
PC Board Transformer	SPC20960

Dimensions : Inches

TOLERANCES:

UNLESS OTHERWISE SPECIFIED, DIMENSIONS ARE FOR REFERENCE PURPOSES ONLY.

DRAWN BY: DATE: 11-08-10

VEE

CHECKED BY: DATE: 14-08-10

JAG

APPROVED BY: DATE: 25-08-10

XXX

DRAWING TITLE:

PC Board Transformer

SIZE DWG. NO. XXX

XXX

SCALE: NTS

U.O.M.: INCHES [mm]

ELECTRONIC FILE

44N3621

REV A

SHEET: 1 OF 1

DISCLAIMER:
ALL STATEMENTS AND TECHNICAL INFORMATION CONTAINED HEREIN ARE BASED UPON INFORMATION AND/OR TESTS WE BELIEVE TO BE ACCURATE AND RELIABLE. SINCE CONDITIONS OF USE ARE BEYOND OUR CONTROL, THE USER SHALL DETERMINE THE SUITABILITY OF THE PRODUCT FOR THE INTENDED USE AND ASSUME ALL RISK AND LIABILITY WHATSOEVER IN CONNECTION THEREWITH.