

19" complete chassis from steel, plain top cover and base plate

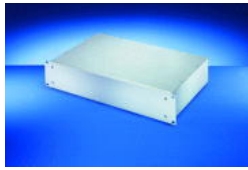
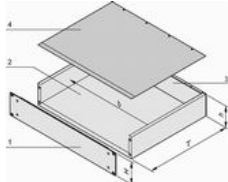


Photo shows 2 U



h = clear height (overall) (H - 3.0 mm)
 b = clear installation width = 447 mm

Part no.: 20860-122

Features:

- Complete chassis, St (AlZn coated) with Al extrusion front panel
- Detachable rear panel for easy machining
- EMC shielding of approx. 30 dB(A) at 1 GHz (without additional shielding material)
- In accordance with standard IEC 60297-3-101
- In the 1 U version 19" and ATX power supplies can be assembled up to a clearance of 40 mm

Add to basket



Technical information:

Height H	H	Depth T
1 U	43,65 mm	340 mm

Downloads:

3D PDF with CAD data (STEP/PDF) (Log in Required)

User Manual (Log in Required)

EMC test report (Log in Required)

[Customized application / Networking](#)

[Customized application / 19" mounting](#)

[Customized application / EMC case](#)

[Customized application / 19" angle removable](#)

[Customized application / 2U case with IEEE boards](#)

[Customized application / 19" angles](#)

[Customized application / LAN switch with RJ45 plugs](#)

[Customized application](#)

[Customized application](#)

[Customised application](#)

To gain access to the additional information you must [Log in](#).
 If you do not yet have a user name, you may [Register here](#).

Delivery comprises: kit

Item	Qty	Description
1	1	Front panel Al extrusion, 3 mm; front anodised, rear etched
2	1	Base body plain, St, 1 mm, (AlZn coated)
3	1	Rear panel, St, 1 mm (AlZn coated)
4	1	Cover plain, St, 1 mm (AlZn coated)
5	1	Assembly kit

Accessories:

Part no.	Description	
20860-256	Front handles incl. assembly kit for 1 U, Al extrusion, anodised, PU 2 pieces	Add to basket

Note:

- Further versions with steel front panel (pizza box) available on request
- Use of telescopic slides not possible
- No special EMC version available
- Standardised internal mounting kits cannot be used