

COAST™

COAST PRODUCTS



COAST™

P.O. Box 5821 • Portland, OR 97228
503-234-4545 • Fax 503-234-4422
Toll Free 1-800-426-5858
www.COASTportland.com

Rev. 2 04/10

2010

2010



Table of Contents

COAST PRODUCTS

Technology.....	4-15
-----------------	------

COAST LIGHTS

■ General Use.....	18-25
■ Professional Use.....	26-33
■ Tactical Use.....	34-37
■ Camping/Emergency Use.....	38-41
■ Headlamps.....	42-47
■ High Performance.....	48-59
■ Gear.....	60-65

COAST KNIVES

■ General Use.....	68-73
■ Hunting.....	74-79
■ Professional Use.....	80-85
■ Tactical Use.....	86-91
■ Outdoor Use.....	92-97
■ Fishing.....	98-101
■ Gear.....	102-105

COAST MULTI-TOOLS

■ Professional Use.....	108-111
■ Tactical Use.....	112-113
■ Outdoor Use.....	114-117
■ Fishing.....	118-121

COAST TECHNICAL SPECIFICATIONS

Lights.....	122-125
Knives.....	126-130
Multi-Tools.....	131

LED TECHNOLOGY

How LEDs Outshine Standard Incandescent Flashlights:

- **Performance.** LEDs can last 50 to 100 times longer than the typical incandescent bulb and can save up to 80 percent of the energy required to light incandescent arrays.
- **Durability.** Because they are solid-state, LEDs hold up well to jarring and bumping as they lack the fragile filament and tubing that increases the odds of breaking. They are resistant to heat, cold, and shock as well.
- **Environmentally friendly.** Unlike CFLs, no mercury is used in the manufacturing of LEDs and the long-life of the bulb means that fewer resources are used over time in maintenance and replacement.
- **Energy-efficiency.** With proper thermal management LEDs burn very efficiently. Incandescent bulbs, on the other hand, emit a staggering 98 percent of their energy as heat.
- **Cost-effectiveness.** Since incandescent bulbs lose so much energy as heat, the savings in battery life alone will pay for the initial cost of any LED light.

The Battery Debate

At COAST, standard battery sizes – AAA, AA, C and D – are the norm for most of the flashlights we carry in order to make battery replacement as easy and cost effective as possible. COAST flashlights last, on average, 2 to 3 times longer than most of the competition's on a single set of batteries, and – when the time does come to change batteries – the cost of doing so is markedly less than the rest when purchasing standard sized batteries than specialized versions.

LEDs Provide Vastly Improved Illumination and Energy Efficiency



Incandescent vs. COAST LED Lenser Energy Use

More Than 200 Hours of Service

The image shows two flashlights. On the left, a yellow flashlight is surrounded by a large stack of 80 AAA batteries. On the right, a black flashlight is surrounded by a small stack of 8 AAA batteries. Below the flashlights are two boxes:

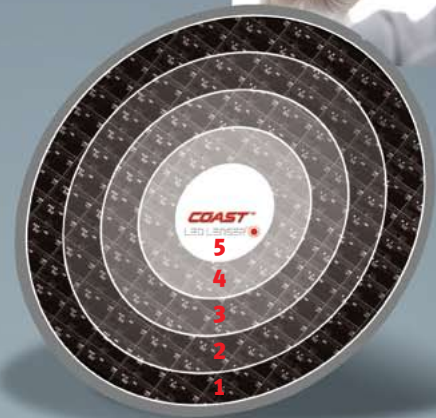
Incandescent 80 batteries 17 bulbs	COAST LED Lenser 8 batteries 1 LED
--	--

The Highest Quality LEDs Provide the Highest Quality Illumination

COAST LED Lenser lights use only the highest quality Nichia™, LumiLED™, and Cree® LEDs.

LEDs are manufactured on silicon wafers in semiconductor cleanrooms. Due to the nature of the manufacturing process, the LEDs made from the center of the wafer are much higher quality and thus provide much brighter light.

Only LEDs from the high quality center of the wafer go into COAST LED Lenser lights.




COAST
LED LENSER



Advanced Lens and Reflector Systems

COAST advanced lens and reflector systems provide a brighter, more focused beam than standard LED lights. The newest optical system, the Advanced Focus System™, offers the convenience of moving from a spot to flood beam without the dark "holes" or "rings" commonly seen at the transition point of competitive adjustable-beam lights. Further detail on the new system can be found on the following pages.

STANDARD LED	COAST LED LENSER OPTICAL TECHNOLOGY					
 <ul style="list-style-type: none"> • Unfocused beam • Standard contacts • Plastic casing • Standard-quality LED 	<p>Crystal Reflector Tube System </p>  <p>Lined with highly reflective Italian crystal, it intensifies light output and provides a much brighter beam than comparable LED lights.</p> <p>Up to 82ft. Beam Distance</p>	<p>Cloverleaf Reflector System </p>  <p>A broad spectrum beam for general illumination.</p> <p>Up to 92ft. Beam Distance</p>	<p>Cloverleaf Multi-Reflector System </p>  <p>A diffused beam that casts a broad shaft of light for up close work.</p> <p>Up to 190ft. Beam Distance</p>	<p>Prism Reflector System </p>  <p>A highly concentrated beam that casts light over a maximum distance</p> <p>Up to 764ft. Beam Distance</p>	<p>Advanced Focus System™ </p>  <p>A spot to flood focusing beam that captures all usable light.</p> <p>Up to 1540ft. Beam Distance</p>	<p>Multi-Optic </p>  <p>A multi-optic focusable lens designed to make the most of high intensity LEDs and provide smooth spot to flood transition.</p> <p>Up to 2034ft. Beam Distance</p>

Cutting-edge Lens Systems Mean Brilliant Light Output

The output of COAST LED Lenser lights is measured in lumens.

WHY LUMENS?

Given the wide range in quality of light sources and optics that are used, an easily identifiable, standard unit measurement is especially important with flashlights and headlamps. COAST LED Lenser measures light output in Lumens because it has been generally adopted by the portable lighting industry as the most universal measurement of light output and accurately demonstrates how COAST LED Lenser has the most efficient optics of any company in the industry, producing brighter lights. This advantage, combined with COAST LED Lenser's superior LEDs, produces the brightest and most efficient LED lights on the market today.



Advanced Focus System™
A Revolution in Lighting

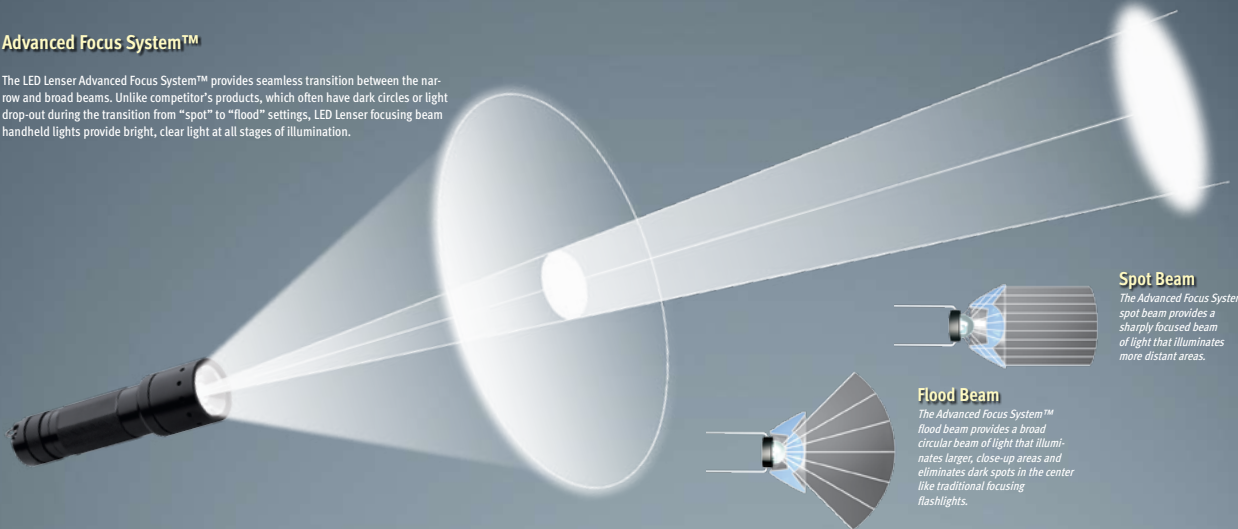
The patent-pending Advanced Focus System™ combines a precision lens and a dynamic reflector to bring LED focusing technology to consumers at price points accessible to anyone. Early focusing beam systems created black spots or rings, hampering the field of view. The Advanced Focus System™ provides a seamless transition from a broad flood beam to a focused spot beam - no black spots, no dark rings, just bright, clear light at all stages of illumination.

We offer two ways to access the Advanced Focus System™:

One-Handed Speed-Focus™, found in many High Performance models, enables the user to change from "spot" to "flood" with a simple push forward or pull back on the head of the light.
Twist Focus lights move from spot to flood by merely twisting left or right on the head of the light.

Advanced Focus System™

The LED Lenser Advanced Focus System™ provides seamless transition between the narrow and broad beams. Unlike competitor's products, which often have dark circles or light drop-out during the transition from "spot" to "flood" settings, LED Lenser focusing beam handheld lights provide bright, clear light at all stages of illumination.



Spot Beam

The Advanced Focus System™ spot beam provides a sharply focused beam of light that illuminates more distant areas.

Flood Beam

The Advanced Focus System™ flood beam provides a broad circular beam of light that illuminates larger, close-up areas and eliminates dark spots in the center like traditional focusing flashlights.



One-handed focusing; just slide forward or back

One-Handed Speed-Focus™

Many of COAST's High Performance lights feature a one-handed system for moving from a broad flood beam to a focused spot beam. A simple push forward or pull back on the head of the light adjusts the beam to suit the application.



Twist to focus light from spot to flood

Twist Focus

Twist Focus lights can easily transition from spot to flood with a simple twist to the left or right on the head of the light.

Continually advancing technology offerings, COAST LED Lenser is featuring two feature sets with the versatility and function customers require—the Quick-cycle Switch System™ and Microcontroller Switch System—available on select models. The Quick-cycle Switch System™ enables users to cycle between available light output levels, meaning the user chooses the level of light needed for their task and decides how to use the battery life of their light most efficiently. The Microcontroller Switch System uses an on-board microprocessor to differentiate between five different flows of light output, from “maximum” to “strobing” light.

Quick-Cycle Switch System™

With this feature, “high” output is the standard setting with each light, meaning approximately 75% output is the norm, preserving battery life. Users can always access the light’s “maximum” brightness by applying momentary pressure to the main switch - simply press and hold it. To activate the low-output setting from the OFF position, fully depress and release the switch two times. Low output is useful for reading, report writing, identification and personal inspections and maximizes battery run-time.



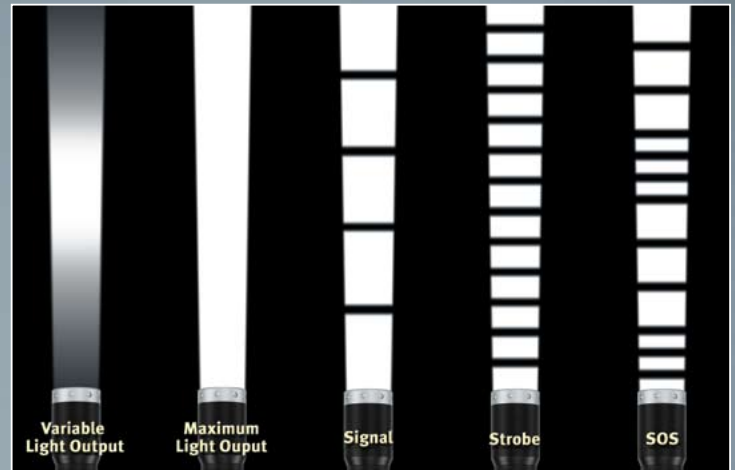
Press at any time for maximum output.

Micro Controller Switch System

The LED Lenser Microcontroller Switch System uses a microprocessor to allow users full control of the illumination settings of their light. Using a single switch, the user has the ability to activate the light at the maximum brightness—ideal for security and tactical use—as well as taking advantage of the four other settings. An additional custom setting (a % of output of their choice) is also available for the user to decide upon and pre-set. Finally, the light’s three other preset options—signal, strobe and SOS settings—round out the total of five settings and multiply uses for the consumer.

The 5 LED Lenser Microcontroller Switch System Settings are:

- **Maximum Light Output:** projects the maximum amount of light produced by the LED.
- **Signal:** produces a slow blinking light that can be used as a signal for tactical or emergency situations.
- **Strobe:** creates very quick flashes of light that can be used to disorient an attacker or as a non-lethal weapon for law-enforcement.
- **SOS:** projects the international Morse Code distress signal, three fast flashes-three long flashes-three fast flashes in sequence.
- **Variable Light Output:** this mode enables the user to adjust the light output to suit the task. The light can be adjusted from a 1%-100% setting to illuminate close-up areas and conserve batteries, while the higher setting illuminates areas that are farther away.



COAST LED Lenser lights are precision engineered to use the most advanced components and highest quality LEDs to produce the highest quality devices on the market. Combining the High Performance LEDs with the most advanced optical and digital technologies along with quality materials — including metal casings and 24-karat gold contacts — produces the best portable lights at price points consumers appreciate.

Each product is tested for luminous flux — the clearest and most precise measurement of the amount of light emitted from any light source — which is measured in *lumens*. In addition, many COAST LED Lenser lights feature our Modular Construction System that incorporates the power switch into the battery pack, further increasing the durable construction of the light.

Portability. Durability. Performance.

COAST LED Lenser employs advanced proprietary technologies to produce more brilliant illumination from a smaller flashlight, making them more portable and convenient to use for a wider variety of applications.

Patented and patent-pending lens and reflector systems enable COAST to create pocket-sized lights that produce twice as much — often more — light than much larger LED lights. And, because they use smaller and non-proprietary batteries, these smaller lights are more economical and less of a headache to operate as well.

Modular Construction System Enhances Performance and Reliability



LED Thermal Management
 Even though LEDs are highly energy efficient, it's vital that the heat they do produce is managed correctly to extend the life of the LED. The high intensity LEDs employed in LED Lenser products utilize special heat sinks to manage the heat flow and thereby get the most light from every LED in COAST products.



115
 Lumens
 Light Output

Model 7438

Length: 5 in.

Weight: 5.6 oz.

3 AAA Batteries

Advanced Technology and Construction Enables COAST LED Lenser to Produce More Light from a Smaller, More Powerful Handheld Light

COAST PRODUCTS

KNIFE / TOOL TECHNOLOGY

Since 1919, COAST has been making products that *get the job done*. First, it was working knives for the rugged loggers of the Pacific Northwest. Then it was specialty knives for the men who fished the great Pacific Ocean.

Today, it's a full range of knives and multi-tools for people across the globe who have their own jobs to get done. COAST's history of making hardworking knives continues today under the leadership of founder Henry Brands' grandson, David C. Brands, the third generation owner of COAST Products. COAST offers consumers a broad range of quality products that provide the performance needed for a price that's warranted.

COAST has expanded and refined its product offerings for 2010; to make it even easier to find the tool needed to *get the job done*, we've organized products into convenient "use" categories. Browse products by how they would be used – whether that be "professional," "tactical" or "outdoor," etc. – and see what's available to help *get the job done*.

All COAST products carry the *COAST Lifetime Guarantee* first instituted by COAST's founder Henry W. Brands.

COAST Gets the Job Done

Materials

COAST knives & tools use only the finest quality 440C specially treated cutlery steel from Seki, Japan. An excellent steel for performance and durability, 440C is a high-chromium stainless steel with a terrific balance between hardness and corrosion resistance. COAST steel is produced in small quantities exclusively for the production of knife blades. In addition, COAST uses solid brass or nickel silver bolsters and linings as well as genuine stag, wood, Zytel®, Kraton™ rubber, and ABS handles. The natural handle materials such as bone, stag, and wood are hand-cut and cured before they are ready to be made into a COAST product.

Technology

COAST uses time-tested procedures augmented by the latest technology throughout the knife and tool production process. COAST blades are formed from either coils of steel or steel plates and initial shaping is completed with laser cutting and fine blanking machinery. Next, a Computer Numerically Controlled (CNC) machine grinds the blade to a specified thickness, depending on the model. Each blade is then heated, cooled and honed to COAST specifications – ultimately becoming suitable for a lifetime of service. Nearly finished, the blade goes through a final grinding process utilizing the CNC machine where the final blade shape is ground and any additional blade features, such as serrations and gut hooks, are produced. Lastly, the knife is assembled and receives a final polishing and sharpening.



Testing

Blade Hardness – COAST's commitment to the customer

COAST tests every blade sold to ensure the optimum hardness for customer use. The hardness of a blade is determined by the type of steel used as well as the type of heat treatments it receives in forging. To measure the hardness of a blade, a diamond is pressed into the steel with a determined load. The depth of penetration is measured in Rockwell C— or abbreviated as HRC or RC. If the blade is comprised of steel which is too soft, the blade will not retain an edge over time. If the blade is made of steel which is too hard, it can be brittle and break under even normal use conditions. COAST has determined the optimal HRC at 57-59, a smaller subset of the recommended range. This HRC ensures the blade will retain its edge while being extremely strong and durable. Any blade that does not meet these conditions is scrapped and does not move into final production phase.



Blade Sharpness

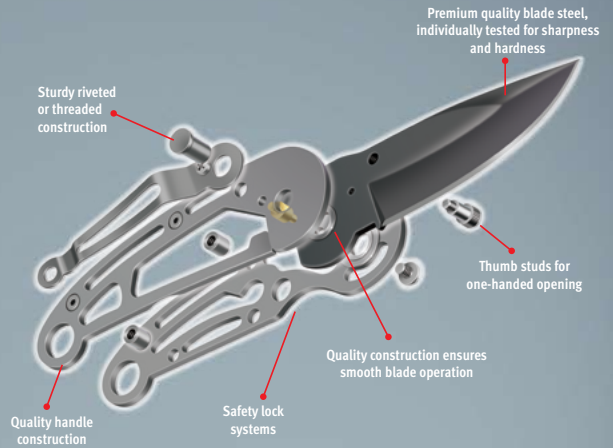
The sharpness of a blade is determined by the quality of the steel and the precision of the blade grinding. After passing the Rockwell test, COAST knives are tested for sharpness on a machine designed by COAST engineers. This Blade Sharpness Tester measures the amount of a pressure required to cut a piece of acrylic tape as it is lowered onto a knife blade. If a blade doesn't meet the minimum threshold requirements, they are not sold as COAST products.



Symbol of Quality

COAST has been producing quality cutlery for over 85 years under the leadership of three generations of the Brands family. Each knife and tool is individually quality tested for both sharpness and hardness of the blade. The Tested seal and *Three Generations of Quality* logo are COAST guarantees that customers are getting a knife or tool that will *Get the Job Done*.

David C. Brands
David C. Brands—Owner, COAST Products

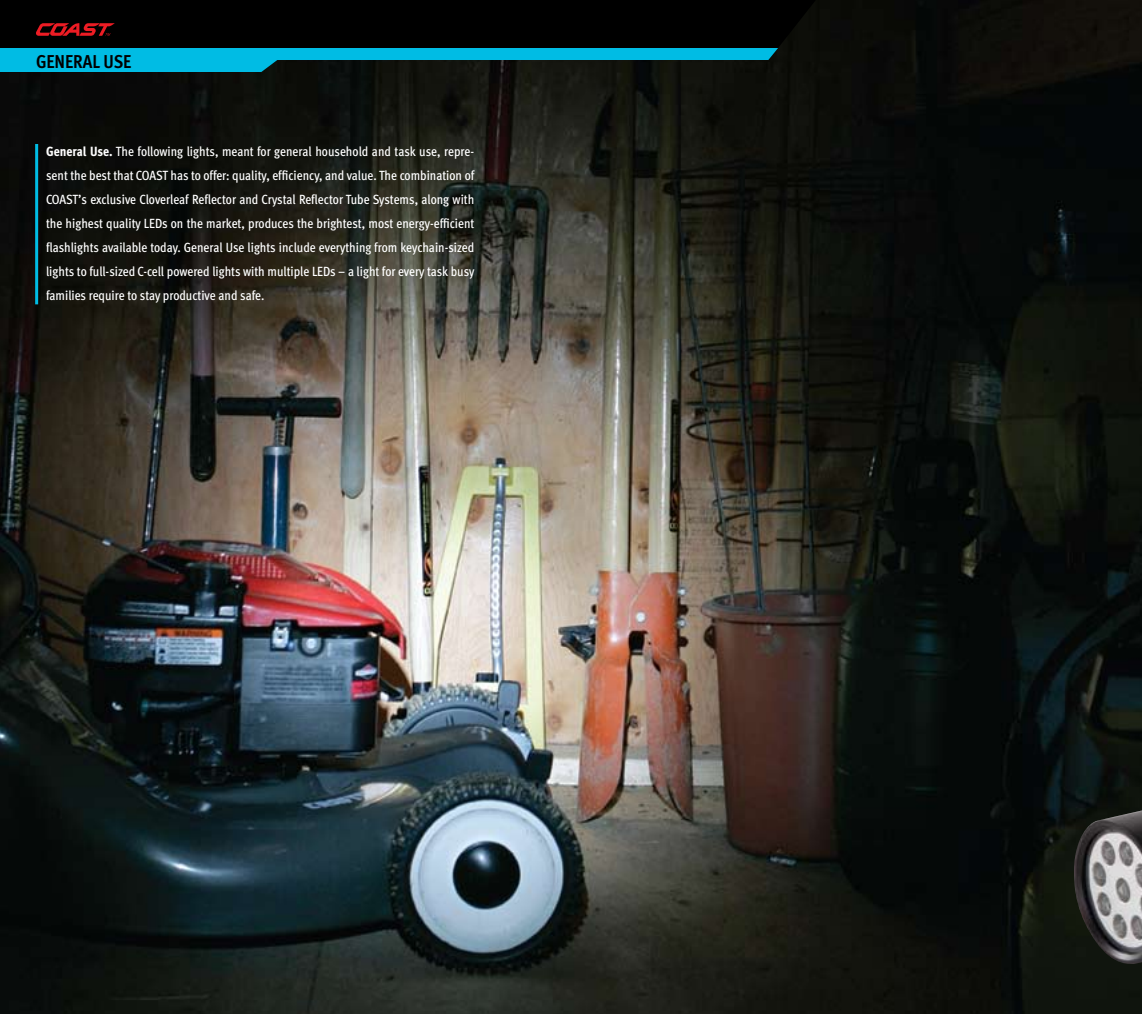


COASTTM



- GENERAL USE
- PROFESSIONAL USE
- TACTICAL USE
- CAMPING / EMERGENCY
- HEADLAMPS
- HIGH PERFORMANCE
- GEAR

General Use. The following lights, meant for general household and task use, represent the best that COAST has to offer: quality, efficiency, and value. The combination of COAST's exclusive Cloverleaf Reflector and Crystal Reflector Tube Systems, along with the highest quality LEDs on the market, produces the brightest, most energy-efficient flashlights available today. General Use lights include everything from keychain-sized lights to full-sized C-cell powered lights with multiple LEDs – a light for every task busy families require to stay productive and safe.



1189
V2 9 CHIP DUAL COLOR FLASHLIGHT

98ft	59	100	2 x C	8.75
Beam Distance	Light Output	Runtime	Battery	Length

- Cloverleaf Multi-Reflector System
- 9 high-intensity LEDs; 8 white, 1 red
- Aluminum casing
- Front dual switch





1006
V2 6 CHIP FLASHLIGHT

105ft	80	20	3 x AAA	6.2
Beam Distance	Light Output	Runtime	Battery	Length

- Cloverleaf Multi-Reflector System
- 6 high intensity LEDs; white beam
- Aluminum casing
- Front switch



1106
V2 6 CHIP DUAL COLOR FLASHLIGHT

85ft	70	20	3 x AAA	6.2
Beam Distance	Light Output	Runtime	Battery	Length

- Cloverleaf Multi-Reflector System
- 6 high intensity LEDs; 5 white, 1 red (red preserves night vision)
- Aluminum casing
- Front dual switch





7547BL (Black casing)
V2 TRIPLEX

59ft	30	16	2 x AA	6.0
Beam Distance	Light Output	Runtime	Battery	Length

- Cloverleaf Reflector System
- 3 high intensity LEDs; white beam
- Lightweight aluminium casing
- Rear on/off switch



Also available in a silver casing as model 7547

7817
INSPECTION LIGHT

9	24	2 x AAA	5.5
Light Output	Runtime	Battery	Length

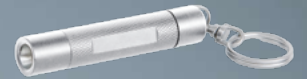
- Crystal Reflector Tube System
- High intensity LED; white beam
- Metal casing
- Rear on/off switch



7839
NANO TAC TORCH

12	1	4 x AG5	2.5
Light Output	Runtime	Battery	Length

- Crystal Reflector Tube System
- High intensity LED; white beam
- Lightweight tactical aluminium casing
- Rear on/off switch



NEW!

7553BL
V8 STANDARD TORCH

12	9	3 x AG13	2.2
Light Output	Runtime	Battery	Length

7550
V8 STANDARD TORCH, RED BEAM

15	7	2 x AG13	2.2
Light Output	Runtime	Battery	Length

- Crystal Reflector Tube System
- High quality LED; white beam
- Front switch
- Metal casing





7831
MINI TAC

20 LUMENS	6 HOURS	1 x AAA	3.5 INCH
Light Output	Runtime	Battery	Length

- Crystal Reflector Tube System
- High intensity LED; white beam
- Lightweight tactical aluminum casing
- Rear on/off switch



7830
MINI TAC

20 LUMENS	6 HOURS	1 x AAA	3.5 INCH
Light Output	Runtime	Battery	Length

- Crystal Reflector Tube System
- High intensity LED; white beam
- Lightweight tactical aluminum casing
- Rear on/off switch



7582BL
SMALL FLEX LIGHT

13 LUMENS	4 HOURS	4 x AG13	6 INCH
Light Output	Runtime	Battery	Length

- Crystal Reflector Tube System
- High intensity LED; white beam
- Metal Casing
- Front Switch



7583BL
MEDIUM FLEX LIGHT

13 LUMENS	6 HOURS	1 x AAA	10.9 INCH
Light Output	Runtime	Battery	Length

- Crystal Reflector Tube System
- High intensity LED; white beam
- Metal Casing
- Front Switch



7578BL
MICRO FLEX LIGHT

6 LUMENS	1.3 HOURS	4 x AG5	5 INCH
Light Output	Runtime	Battery	Length

- Crystal Reflector Tube System
- High intensity LED; white beam
- Metal Casing
- Front Switch



75331
CLIP LIGHT

10 LUMENS	3 HOURS	1 x AAA	4.1 INCH
Light Output	Runtime	Battery	Length

- Crystal Reflector Tube System
- High intensity LED; white beam
- Lightweight tactical aluminum casing
- Rear on/off switch
- Alligator Clip



PROFESSIONAL USE

Professional Use. COAST gained success providing hard workers with products that went to work with them, and that's still where the focus is placed. The Professional Use series features COAST's most advanced optical and digital technology, combined with the highest wattage LEDs to create lights that meet the highest professional standards—COAST customers. Specially designed for heavy and continuous use, these lights will stand up to whatever abuse the job puts them through. With stainless steel and aluminum, they clean easily, fit in a pocket or clip to a belt and feature COAST's best technology (including the Prism Reflector System, and the Cloverleaf Reflector System—all described in detail on pages 6-7) so that customers can rely on COAST products to help *Get the Job Done.*



7853
DIGITAC RECHARGEABLE FOCUS BEAM

590ft	127	2	1.5	4.7
Beam Distance	Light Output	Runtime	Battery	Length

- Twist for narrow or broader beam; no dark spots when moving from concentrated to wide beam
- Advanced Focus System™
- High intensity LED; white beam
- Charges off AC or DC power
- Aluminum casing
- Rear on/off switch

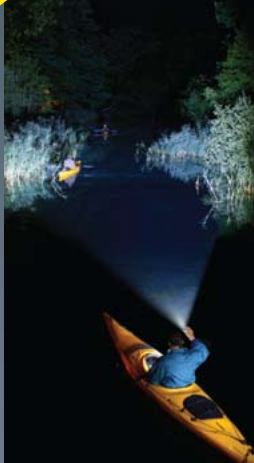


COAST LED LENSER
PROFESSIONAL USE



Lithium Ion Rechargeable Batteries

Like so many of the electronics people rely on daily, the flashlight is going rechargeable. The Digitac Rechargeable features a high quality lithium ion battery, similar to many digital cameras. The lithium ion battery provides one of the best energy-to-weight ratios available — important in a compact light like the Digitac. In addition, lithium ion has solved the problem of the "memory effect" that causes other rechargeable batteries to hold less than optimal charge. Lithium ion batteries hold their charge extremely well, even when not in use, and recharge quickly.



The LED Lenser Advanced Focus System™

Standard incandescent flashlights provide a flood beam to light a broad, close-in area. Newer flashlights provide the ability to focus the beam from broad to spot to highlight objects further away with clarity. Yet, historically focusing beam flashlights have black spots or dark rings—halos—that appear during the transition from a broad flood beam to a focused spot beam, making it much harder to actually see what's being illuminated. This is the case with so many lights that consumers have become accustomed to the dark spots and halos and that's why LED Lenser's Advanced Focus System™ is so revolutionary. COAST's unique lens and reflector system provides transitions from "broad" to "focused" with no rings, spots, or drop out areas. The beam is clear, bright and consistent through all phases of the transition from flood to spot – every time, all the time.



7575 AUTO LED

13 LUMENS	.5 HOURS	4 x 20H	1.9 INCH
Light Output	Runtime	Battery	Length

- "Moon" lens produces circular beam
- High intensity LED; white beam
- Charges in vehicle's cigarette lighter
- Blue light shows charge status
- Metal casing
- Twist on/off switch



7300 LASER POINTER

N/A	4	3 x AG5	2.3
Light Output	Runtime	Battery	Length

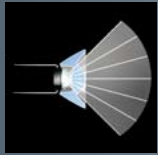
- High intensity LED; red laser
- Metal casing
- Front switch



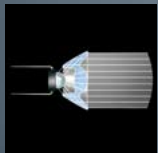
7732DUV V-6 CHIP DUAL COLOR ULTRAVIOLET LIGHT

114ft	70	52	3 x AAA	3.4
Beam Distance	Light Output	Runtime	Battery	Length

- Cloverleaf Multi-Reflector System
- High intensity LEDs; 3 white, 3 ultraviolet
- Aluminum casing
- Front dual switch



The Advanced Focus System™ flood beam provides a broad circular beam of light that illuminates larger, close-up areas and eliminates dark spots in the center.



The Advanced Focus System™ spot beam provides a sharply focused beam of light that illuminates more distant areas.

7438 TACTICAL FOCUS BEAM

722ft	115	52	3 x AAA	5
Beam Distance	Light Output	Runtime	Battery	Length

- Twist for narrow or broader beam; no dark spots when moving from concentrated to wide beam
- Advanced Focus System™
- High intensity LED; white beam
- Aluminum casing
- Rear on/off switch





Twist to focus light from spot to flood

NEW!

8607
L7 FOCUS BEAM

738ft	115	42	3 x AAA	5.5
Beam Distance	Light Output	Runtime	Battery	Length

- Twist for spot or flood beam
- Advanced Focus System™
- High intensity LED; white beam
- Weatherproof, corrosion resistant polymer casing
- Rear power switch



NEW!

8606
L6 FOCUS BEAM

656ft	105	8	2 x AA	6.3
Beam Distance	Light Output	Runtime	Battery	Length

- Twist for spot or flood beam
- Advanced Focus System™
- High intensity LED; white beam
- Weatherproof, corrosion resistant polymer casing
- Rear twist switch

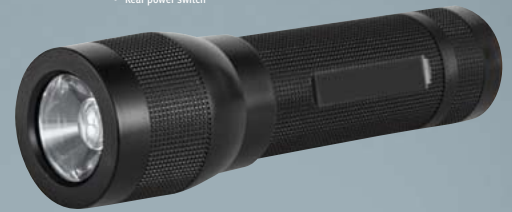


NEW!

8604
L4 FOCUS BEAM

295ft	25	26	3 x AAA	5.5
Beam Distance	Light Output	Runtime	Battery	Length

- Twist for spot or flood beam
- Advanced Focus System™
- High intensity LED; white beam
- Weatherproof, corrosion resistant polymer casing
- Rear power switch

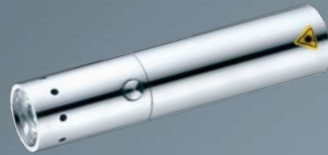




7730
V6 STAINLESS STEEL POWER CHIP

590ft	110	37	3 x AAA	4.1
Beam Distance	Light Output	Runtime	Battery	Length

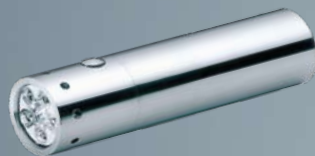
- Prism Reflector System
- High intensity LED; white beam
- Stainless steel casing
- Front switch



7732
V6 STAINLESS STEEL 6 CHIP

170ft	135	48	3 x AAA	3.6
Beam Distance	Light Output	Runtime	Battery	Length

- Cloverleaf Multi-Reflector System
- 6 high intensity LEDs; white beam
- Stainless steel casing
- Front switch



Dive Torches

For divers, crystal clear water is ideal... and hardly ever the case. To allow divers, whether for work or pleasure, to get the most from their experiences, they need to see and experience the underwater world surrounding them. The D14 Waterproof Flashlight has been tested to be waterproof up to 197 ft. (60 m.) Users get the benefits of clear, brilliant white LED light along with the energy efficiency—20 hours on a single set of batteries—for which COAST LED Lenser is well known.

7456
D14 WATERPROOF FLASHLIGHT

590ft	150	20	4 x AA	6.2
Beam Distance	Light Output	Runtime	Battery	Length

- One-handed front switch
- Prism Reflector System
- High intensity LED; white beam
- Neon color makes torch easy to see in marine conditions
- Watertight; 197 feet/60 meters depth rating
- Stainless steel and plastic casing
- Lanyard included





Tactical Use. COAST continues a long tradition of providing specific products for hard working customers by developing a line of lights that combine the most advanced optical and digital technology with rugged styling and the technical features necessary for law enforcement, military, and extreme outdoor use. In situations where an intense light is needed for non-lethal disarming, or to temporarily disorient a suspect, these tactical lights can make a difference in avoiding lethal situations. COAST tactical lights feature compact designs, lightweight aluminum casings, are virtually indestructible and many include rear switches with momentary and permanent on/off capabilities highly desired by law enforcement and military users.

7736TS
POWER CHIP TACTICAL LIGHT

721ft	115 lumens	52 mm	3 x AAA	5 modes
Beam Distance	Light Output	Beam Diameter	Battery	Length

- Prism Reflector System
- High Intensity LED; white beam
- Lightweight tactical aluminum casing
- Rear on/off switch



Optional Universal/Picatinny Rail Mount available on page 65



With optional Pressure Switch, the 7736TS makes the ideal weapon mounted light.

77364
4 COLOR SIGNAL LIGHT

Beam Distance	Light Output	Runtime	Battery	Length
114ft	3.8 lumens	70 mins	3 x AAA	4 inches

Beam Distance	Light Output	Runtime	Battery	Length
114ft	1.2 lumens	360 mins	3 x AAA	4 inches

Beam Distance	Light Output	Runtime	Battery	Length
114ft	7.5 lumens	315 mins	3 x AAA	4 inches

Beam Distance	Light Output	Runtime	Battery	Length
114ft	70 lumens	52 mins	3 x AAA	4 inches

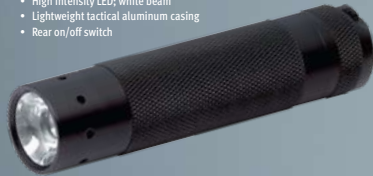
- Cloverleaf Multi-Reflector System
- 6 high intensity LEDs: 3 white, 1 blue, 1 red, 1 green
- Lightweight tactical aluminum casing
- Front quad switch



7736
V² TACTICAL POWER CHIP TORCH

Beam Distance	Light Output	Runtime	Battery	Length
590ft	110 lumens	37 mins	3 x AAA	4.5 inches

- Prism Reflector System
- High intensity LED; white beam
- Lightweight tactical aluminum casing
- Rear on/off switch



7736D
V² 6 CHIP DUAL COLOR TACTICAL TORCH

Beam Distance	Light Output	Runtime	Battery	Length
137ft	120 lumens	44 mins	3 x AAA	3.7 inches

Beam Distance	Light Output	Runtime	Battery	Length
28ft	5 lumens	74 mins	3 x AAA	3.7 inches

- Cloverleaf Multi-Reflector System
- 6 high intensity LEDs: 5 white, 1 red
- Lightweight tactical aluminum casing
- Front dual switch



73455
V² 6 CHIP TACTICAL

Beam Distance	Light Output	Runtime	Battery	Length
105ft	80 lumens	20 mins	3 x AAA	4.5 inches

- Cloverleaf Multi-Reflector System
- 6 high intensity LEDs; white beam
- Lightweight tactical aluminum casing
- Rear on/off switch





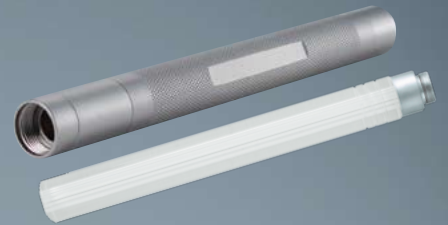
Emergency Use. When emergencies strike, the only light necessary is reliable, provides a lot of light, lasts a long time and keeps family safe. COAST emergency use lights were designed to meet those needs—compact, lightweight, and easy to pack; they are great to keep in arm's reach at home or in the vehicle. Their varying options can provide further peace of mind in emergencies with options to signal for help (S.O.S.), provide non-lethal protection (strobe), and their battery life is incomparable among others in the category, meaning batteries can be conserved better in emergencies.



7533/2
CAMP LIGHT

12 Lumen	24 Hours	2 x AA Battery	5.5 Length
-------------	-------------	-------------------	---------------

- Dual function—use as flashlight or area light
- Crystal Reflector Tube System with Refractor Rod
- High intensity LED; white beam
- Metal casing
- Front switch



NEW!

7044
EMERGENCY STRETCH LIGHT

15 Lumen	40 Hours	4 x AAA Battery	4.5 Length
-------------	-------------	--------------------	---------------

- Closed, use as a handheld flashlight
- Open, use as an area light
- High quality LED; 4 white, 2 red
- Push button on/off
- Includes lanyard
- Weatherproof, corrosion resistant rubber and polymer casing



Solid White



Solid Red



Flashing Red



NEW!

CE7124HGB
EMERGENCY AREA LIGHT

125 Lumen Light Output	100 Hours Runtime	4xD Battery	8.25 Inches Length
------------------------------	-------------------------	----------------	--------------------------

- 5 high quality LEDs; 1 white, 4 red
- Push button on/off with VLT Variable Light Technology—choose any light level
- Durable casing
- Built-in battery life indicator



Flashing Red Solid Red Area Light Energy Saving

NEW!

7040
PERSONAL EMERGENCY AREA LIGHT

17 Lumen Light Output	30 Hours Runtime	4 x AA Battery	5.75 Inches Length
-----------------------------	------------------------	-------------------	--------------------------

- 8 high quality LEDs
- Push button switch
- Protective cage shields plastic globe
- Durable casing



Flashing Red Solid Red Area Light Energy Saving

NEW!

7050
4-C EMERGENCY AREA LIGHT

60 Lumen Light Output	50 Hours Runtime	4 x C Battery	7.5 Inches Length
-----------------------------	------------------------	------------------	-------------------------

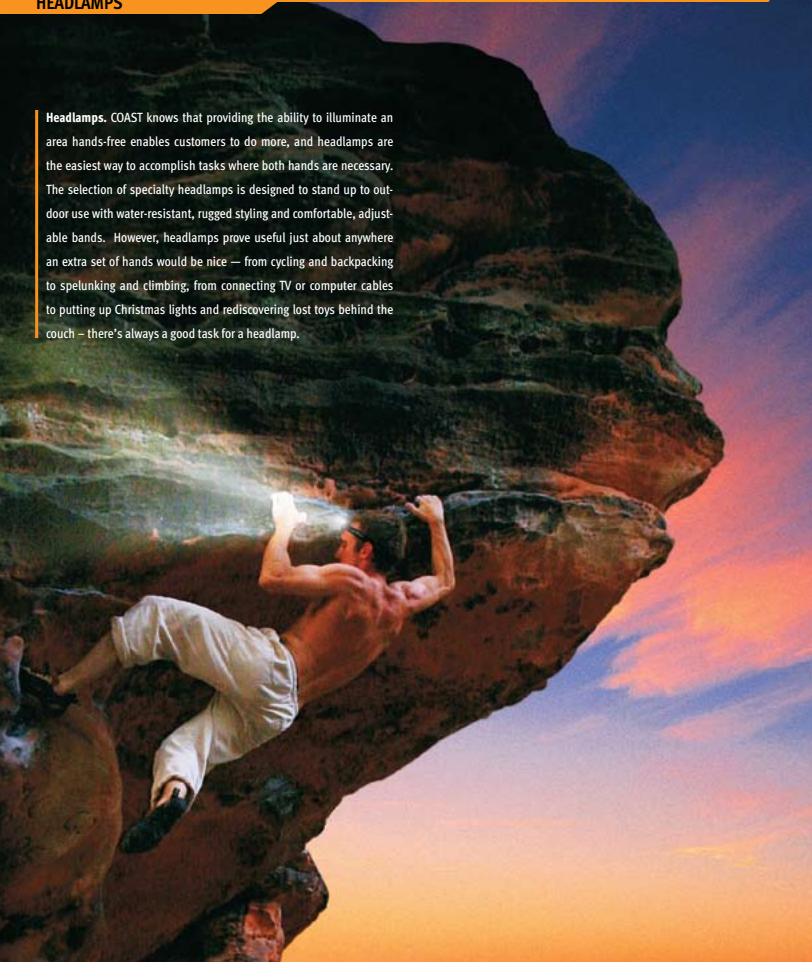
- 24 high quality LEDs
- Push button on/off
- Protective cage shields plastic globe
- Durable casing
- Built-in hanger



Flashing Red Solid Red Full White Energy Saving



Headlamps. COAST knows that providing the ability to illuminate an area hands-free enables customers to do more, and headlamps are the easiest way to accomplish tasks where both hands are necessary. The selection of specialty headlamps is designed to stand up to outdoor use with water-resistant, rugged styling and comfortable, adjustable bands. However, headlamps prove useful just about anywhere an extra set of hands would be nice — from cycling and backpacking to spelunking and climbing, from connecting TV or computer cables to putting up Christmas lights and rediscovering lost toys behind the couch — there's always a good task for a headlamp.

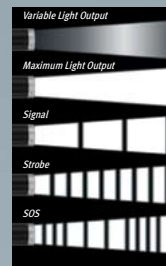


NEW!

7499
H14 HEADLAMP

689ft	200	2.5	4 x AA
Beam Distance	Light Output	Runtime	Battery

- Advanced focus System
- One-Handed Speed-Focus™
- Micro Controller Switch System
- On/off switch on battery pack
- Light and battery can be removed from head strap for helmet attachment
- Variable Light Output Technology controls brightness



Hinged to position beam



Stageless transition from flood to spot.

7495
H5 FOCUSING HEADLAMP

246ft	26 lumens	11 modes	3 x AAA
Beam Distance	Light Output	Function	Battery

- Advanced Focus System™
- High intensity LED; white beam
- Metal & plastic casing, adjustable elastic straps
- Hinged attachment to position beam
- Front switch



NEW!

7494
H4 3X5 MM LED HEADLAMP

59ft	30 lumens	15 modes	3 x AAA
Beam Distance	Light Output	Function	Battery

- Three white LEDs
- Front on/off switch
- Can be used as a flashlight with included plastic carrying case
- Belt clip on carry case



Includes swivel clip



Inside case, doubles as a handheld light



7497
H7 FOCUSING HEADLAMP with VLT

590ft	170 lumens	15 modes	3 x AAA
Beam Distance	Light Output	Function	Battery

- Advanced Focus System™
- Variable Light Output Technology (dimming function) controls light output
- High intensity LED; white beam
- Metal & plastic casing, adjustable elastic straps
- Hinged attachment to position beam
- Front switch



Hinged Attachment Lets You Position Beam Where You Need It



7498
H7R RECHARGEABLE FOCUSING HEADLAMP with VLT

590ft	170 lumens	3.5 modes	3 x AAA
Beam Distance	Light Output	Function	Battery

- Advanced Focus System™
- Variable Light Output Technology (dimming function) controls light output
- High intensity LED; white beam
- Includes rechargeable battery and charger unit
- Metal & plastic casing, adjustable elastic straps
- Hinged attachment to position beam
- Front switch





7041
6 CHIP LED HEADLAMP

105ft	80 lumens	80 hours	3 x AAA
Beam Distance	Light Output	Runtime	Battery

- Cloverleaf Multi-Reflector System
- High intensity LED; white beam
- Lightweight, comfortable
- Front switch



7468
REVOLUTION HEADLAMP with VLT

344ft	110 lumens	4 hours	3 x AAA
Beam Distance	Light Output	Runtime	Battery

- Prism Reflector System
- High intensity LED; white beam
- Variable Light Output Technology (dimming function) controls light output
- Hinged attachment to position beam
- Metal & plastic casing, adjustable elastic straps
- Front switch



7451
MICRO HEADLAMP

13 lumens	6.5 hours	1 x AAA
Light Output	Runtime	Battery

- Crystal Reflector Tube system
- 3 high intensity LEDs; 1 white in front, 2 blue safety lights in rear
- Hinged attachment to position beam
- Metal casing & adjustable elastic straps
- Rear on/off switch



1041
REVOLUTION TRIPLEX HEADLAMP with VLT

102ft	60 lumens	17 hours	3 x AAA
Beam Distance	Light Output	Runtime	Battery

- Cloverleaf Multi-Reflector System
- 3 high intensity LEDs; white beam
- Variable Light Output Technology controls brightness
- Hinged attachment to position beam
- Metal & plastic casing, adjustable elastic straps
- Front switch



High Performance. COAST LED Lenser lights are the most technologically advanced LED lights available today. Combining the highest quality LEDs with patented advanced lens and optic systems, COAST LED Lenser High Performance flashlights produce beams that are brighter than other LED lights and can be easily adapted to any use.



8737
X21R RECHARGEABLE LIGHT

	Beam Distance Feet/Meters	Light Output LUMENS	Runtime HOURS	Battery	Length INCHES
MAX	2,034ft	1500	TASK MODE	4 x D Ni-MH	16.5
HIGH	1,903ft	1250	5.5		
LOW	475ft	280	10		

The revolutionary X21, released in 2009, is now available in a rechargeable battery version. Giving off more than 1500 lumens – an effective range of more than six football fields – the X21R combines focusable task lighting with 5.5 hours of battery life on 4 D cell alkaline batteries or the provided rechargeable lithium ion battery.

- 16.5 inches long / 3.6 inch head diameter
- Aluminum body
- Advanced Focus System™ – Multi-Optic
- Speed-Focus™
- Three step Quick-Cycle Switch™ function – press for maximum light, click for high light, click again for low
- Powered by included rechargeable battery or four D batteries
- Charging cradle and wall mount included
- Microcontroller switch system
- Anti-roll hood and tail cover



Includes carrying case



Includes wall mount and AC recharging unit





8437
X21

	Beam Distance	Light Output LUMENS	Runtime HOURS	Battery	Length INCHES
HIGH/TASK	1,532ft	1300	155		
LOW	443ft	230	244	4 x D	15.5

With 1300 lumens of focusable light, the X21 is the choice when only the brightest light available will do. Also comes in a rechargeable X21R version. (see pg 49)

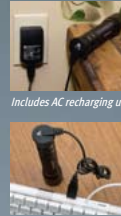
- Aluminum body
- Advanced Focus System™—Multi-Optic
- Speed Focus™
- Three step Quick-Cycle Switch™ function—press for momentary light, click for high light, click again for low light
- Carrying case included



8307 include all these ways to recharge



Includes wall mount



Recharges in USB port, too



Magnetic recharger makes it easy to recharge the unit



Includes carrying case

Variable Light Output



Maximum Light Output



Signal



Strobe



SOS



NEW!

8307R
M7R

	Beam Distance	Light Output LUMENS	Runtime HOURS	Battery	Length INCHES
MAX	837ft	220			
HIGH	771ft	180	12	1 x CR18650	6
LOW	328ft	30	20.5		

The M7R combines the incredible brightness and compact size of the best selling P7 with added features and the convenience of a rechargeable battery. The M7R produces 220 lumens of focusable light, includes a strobing mode, and features the upgraded Advanced Focus System™ that allows users to lock in their preferred spot or focus beam. The unique magnetic recharging system is easy to use with or without the included wall mount.

- Advanced Focus System™
- Speed Focus™
- Magnetic recharging system
- Microcontroller switch system
- Intelligent clip included—0317



NEW!

8307T
M7

	Beam Distance	Light Output LUMENS	Runtime HOURS	Battery	Length INCHES
MAX	837ft	220			
HIGH	771ft	180	3.5	4 x AAA	5.75
LOW	328ft	30	11		

The M7 upgrades the popular T7 with a new features that improve functionality for all users. The M7 produces 220 lumens of focusable light, includes a strobing mode, and features the upgraded Advanced Focus System™ that allows users to lock in their preferred spot or focus beam. The on/off switch has also been upgraded with a new textured rubber coating that provides more water resistance and better reliability.

- Advanced Focus System™
- Speed Focus™
- Microcontroller switch system
- Intelligent clip included—0317





8705
P5R

	Beam Distance	Light Output LUMENS	Runtime HOURS	Battery	Length INCHES
HIGH/TASK	623ft	210	3	1 x CR14500 LI-ION	4.75
LOW	164ft	18	7		

The compact and bright P5 is now available in a rechargeable version, the P5R. The unique magnetic recharging system is easy to use with or without the included wall mount.

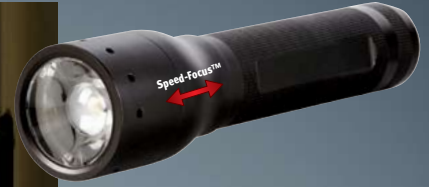
- Aluminum body
- Advanced Focus System™
- One-Handed Speed-Focus™
- Slide focus has a twist to lock/unlock at any point in the Slide focus.
- Powered by included Li-Ion rechargeable battery
- Magnetic charger cord and wall mount included
- Microcontroller system



Includes wall mount



Magnetic recharger makes it easy to recharge the unit



8414
P14

	Beam Distance	Light Output LUMENS	Runtime HOURS	Battery	Length INCHES
MAX	919ft	210	TASK MODE		
HIGH	804ft	155	104	4 x AA	8.5
LOW	394ft	33	84		

The P14 uses LED Lenser's popular tactical casing in a slightly larger size that allows for the use of the world's most common battery, the AA. Producing 210 lumens, the P14 has the brightness and battery run time professionals are looking for.

- Aluminum body
- Advanced Focus System™
- One-Handed Speed-Focus™
- Three step Quick-Cycle Switch™ function—press for maximum light, click for high light, click again for low light
- Sheath included

8407
P7

	Beam Distance	Light Output LUMENS	Runtime HOURS	Battery	Length INCHES
MAX	689ft	200	TASK MODE		
HIGH	656ft	150	55	4 x AAA	5.5
LOW	295ft	30	64		

The P7 Tactical should be standard equipment on every duty belt. With 200 lumens of focusable light and up to 64 hours of battery life from standard AAA batteries, it will far outshine any other light of its size.

- Aluminum body
- Advanced Focus System™
- One-Handed Speed-Focus™
- Three step Quick-Cycle Switch™ function—press for maximum light, click for high light, click again for low light
- Sheath included



Optional Universal/
Picatinny Rail Mount
available on page 65





8421
T5

Beam Distance	Light Output	Runtime	Battery	Length
426ft	105 lumens	3 hours	1 x AA	4.75 inches

Using the same PIT Technology as the P5 and LED Lenser's Speed-Focus™ technology.

- Aluminum body
- Advanced Focus System™
- One-Handed Speed-Focus™
- Tactical style rear switch
- Sheath included



8420
T7

Beam Distance	Light Output	Runtime	Battery	Length
689ft	200 lumens	200 hours	4 x AAA	5.75 inches
HIGH	656ft	150	55	
LOW	295ft	30	64	

The T7 brings the same incredible combination of brightness and size as the P7, a tactical style, and LED Lenser's new Speed-Focus™ technology.

- Aluminum body
- Advanced Focus System™
- One-Handed Speed-Focus™
- Three step Quick-Cycle Switch™ function—press for maximum light, click for high light, click again for low light
- Sheath included



8417
P17

Beam Distance	Light Output	Runtime	Battery	Length
1082ft	220 lumens	480 hours	3 X D	13 inches
HIGH	984ft	190	385	
LOW	659ft	40	480	

With over 480 hours of light from one set of batteries and 220 lumens of focusable light, the P17 will be ready to go when you really need a bright light.

- Aluminum body
- Advanced Focus System™
- One-Handed Speed-Focus™
- Three step Quick-Cycle Switch™ function—press for maximum light, click for high light, click again for low light





8313
K3

108ft	15 lumens	2 modes	4 x AG13	2.75 inches
Beam Distance	Light Output	Modes	Battery	Length

Weighing only 1.2 oz., the K3 offers dependable light output in a micro sized package.

- Aluminum body
- Advanced Focus System™
- One-Handed Speed-Focus™
- Rear switch



8406
P6

476ft	130 lumens	8 modes	2 x AA	6.75 inches
Beam Distance	Light Output	Modes	Battery	Length

For those looking for a bright light with a slim profile the P6 is the answer.

- Aluminum body
- Advanced Focus System™
- One-Handed Speed-Focus™
- Tactical style rear switch
- Sheath included



8403
P3

102ft	16 lumens	6.5 modes	1 x AAA	3.95 inches
Beam Distance	Light Output	Modes	Battery	Length

The P3 is under four inches long and about as big around as a pen, making it perfect for a pocket.

- Aluminum body
- Advanced Focus System™
- One-Handed Speed-Focus™
- Tactical style rear switch



8405
P5

426ft	105 lumens	3 modes	1 x AA	4.75 inches
Beam Distance	Light Output	Modes	Battery	Length

The P5 offers the best combination of small size and bright light.

- Aluminum body
- Advanced Focus System™
- Tactical style rear switch
- One-Handed Speed-Focus™
- Sheath included
- Intelligent clip included—0315





8402
P2

75ft	14	6.5	1 x AAA	4
Beam Distance	Light Output	Runtime	Battery	Length

The P2 Moon Lens casts a perfectly circular beam of light that is great for all kinds of work.

- Moon lens
- Aluminum body
- Pocket clip
- Twist focus
- Rear switch



8404
P4

88ft	20	3.5	2 x AAA	5.75
Beam Distance	Light Output	Runtime	Battery	Length

The P4 Moon Lens casts a perfectly circular beam like the P2, but in a slightly larger light.

- Moon lens
- Aluminum body
- Pocket clip
- Twist focus
- Rear switch

NEW!

0039 Pouch
INTELLIGENT POUCH WITH SWIVEL CLIP & COLORED FILTERS

- For P7 and T7 lights
- Pouch has built-in swiveling belt clip
- Pouch top opening enables use of light even when sheathed
- Includes 4 colored filters to install in top of pouch



Included colored filters feature anti-reflective coating to ensure maximum available light passes through each filter lens.

Includes Set of Colored Filters

The Intelligent Pouch includes four glass filters that enable the user to change the flashlight's beam color for different applications. Filters feature anti-reflective coating that ensures maximum available light passes through each filter lens. Just snap the selected filter into place in the IP's rubberized filter cap to change colors. All filters store conveniently in elastic pocket on back of sheath.



WHITE—ideal for all-purpose illumination; provides perfect color distinction and clarity



RED—best for preserving night vision; does not cause pupils to constrict



YELLOW—for non-emergency signaling and enhanced color rendering



GREEN—preserves night vision but with adequate color distinction; allows hunters to safely move about at night or read maps without scaring off game



BLUE—preserves night vision; one of the few colors of light that will cut through fog; also used to distinguish blood from other fluids, blood appears black. Or combine blue light with red light for superior blood tracking



Swiveling clip on back of pouch enables multi-position carry; just click into position.

Filters store in elastic pocket on back of pouch.



NEW!

0315
INTELLIGENT SWIVEL CLIP FOR P5



0317
INTELLIGENT SWIVEL CLIP FOR P7, M7R AND MT7



0318
INTELLIGENT SWIVEL CLIP FOR P14



0319
INTELLIGENT SWIVEL CLIP FOR D-CELL LIGHTS



I16067
Tripod Mount for X21, X21R & P17

Sturdy, threaded tripod mount enables user to attach the X21, X21R or P17 to tripod stand, turning a handheld light into an area light.



Intelligent Clip Swivels for Multi-Position Carry



The COAST LED Lenser Intelligent Clip securely holds a variety of lights and clips to belt or waist-band. For extra convenience, the clip swivels, enabling the user to focus the beam of light exactly where it's needed.



I16067 Tripod mount in use

2001
DEEP NYLON SHEATH
with Foldover Closure

- Durable Nylon construction
- Velcro® closure
- 6 inch length
- 1 inch depth
- Belt loop on back



2002
DEEP NYLON SHEATH
with Foldover Closure

- Durable Nylon construction
- Velcro® closure
- Belt loop on back
- 4.5 inch length
- 1 inch depth



2003
DEEP NYLON SHEATH
with Foldover Closure

- Durable Nylon construction
- Velcro® closure
- Belt loop on back
- 5 inch length
- 1 inch depth



2021
FLAT NYLON SHEATH
with Foldover Closure

- Durable Nylon construction
- Velcro® closure
- Belt loop on back
- 6.5 inch length



2026
BASKETWEAVE
LEATHER SHEATH
with Snap Closure

- Genuine leather construction
- Handsome basketweave texture
- Heavy duty stitching
- Durable snap closure
- Leather 2.5 inch belt loop on back
- 6 inch length



2027
SMOOTH LEATHER SHEATH
with Snap Closure

- Genuine leather construction
- Heavy duty stitching
- Durable snap closure
- Leather 2.5 inch belt loop on back
- 6 inch length



2007
PARTITIONED
NYLON SHEATH
with Foldover Closure

- Durable Nylon construction
- Two compartments
- Velcro® closure
- Belt loop on back
- 6.3 inch length



2008
FLAT NYLON SHEATH
with Foldover Closure

- Durable Nylon construction
- Velcro® closure
- Belt loop on back
- 6.8 inch length



2009
RIGID SHEATH
with Open Top

- Durable Nylon cloth over rigid substructure
- Steel belt clip on back
- Reinforced clip attachment
- 5 inch length



2029
FLAT NYLON SHEATH
with Foldover Closure

- Durable Nylon construction
- Velcro® closure
- Belt loop on back
- 6.25 inch length



7859
DC CAR CHARGER

- Plugs into vehicle's cigarette lighter to recharge light
- For use with model 7853



2018
PADDED SHEATH
with Foldover Closure

- Durable Neoprene® construction
- Velcro® closure
- Nylon belt loop on back
- 3 inch length



2019
PADDED SHEATH
with Partial Closure

- Durable Neoprene® construction
- Velcro® closure
- Nylon belt loop on back
- 3.5 inch length



2020
FLAT NYLON SHEATH
with Foldover Closure

- Durable Nylon construction
- Velcro® closure
- Belt loop on back
- 5.5 inch length



HP998407
FLARE CONE

- Fits P7 & T7



HP998414
FLARE CONE

- Fits P14



BATTERY TYPE	NUMBER PER PACKAGE	PRODUCT NUMBER
AG5	2	T7714CP
AG13	2	T77201CP
AAAA	4	T7722CP
AAA	4	T7721CP
AA	4	T7720CP
CR14500	1	T77292CP
ICR14500	1	T76103CP
ICR18650	1	T76102CP
AA NI-MH Rechargeable	4	T76101CP
D NI-MH Rechargeable	4	T76104CP
AAA NI-MH Rechargeable	3	T76105CP
20H NI-MH	4	T77202CP
40H NI-MH	1	T7723CP
C	2	T7723CP
D	2	T7724CP

2028
SMOOTH LEATHER SHEATH
with Snap Closure

- 3 inch belt loop fits all duty belts
- 6.375 inch length
- Durable rock stitched construction
- Full grain vegetable tanned drum dyed double shoulder leather



5451
HEAVY DUTY NYLON SHEATH
with Foldover Closure

- Durable Nylon construction
- Heavy duty reinforced stitching
- Velcro® closure
- 6.3 inch length
- 2.5 inch belt loop on back



5710
RIGID NYLON SHEATH

- Durable Nylon cloth over rigid substructure
- Velcro® closure
- 6.625 inch length
- Belt loop on back



5713
RIGID NYLON SHEATH

- Durable Nylon cloth over rigid substructure
- Velcro® closure
- 8.75 inch length
- Belt loop on back



5714
RIGID NYLON SHEATH

- Durable Nylon cloth over rigid substructure
- Velcro® closure
- 7 inch length
- Belt loop on back



5715
RIGID NYLON SHEATH

- Durable Nylon cloth over rigid substructure
- Velcro® closure
- 6.5 inch length
- Belt loop on back



5716
RIGID NYLON SHEATH

- Durable Nylon cloth over rigid substructure
- Velcro® closure
- 5.5 inch length
- Belt loop on back



5717
RIGID NYLON SHEATH

- Durable Nylon cloth over rigid substructure
- Velcro® closure
- 5.25 inch length
- Belt loop on back



7733RM
UNIVERSAL/PICATINNY RAIL MOUNT
for use with model 7736TS



7733TS
PRESSURE SWITCH
for use with model
7736TS

8400RM
UNIVERSAL/PICATINNY
RAIL MOUNT
for use with model
8407 P7 or 8420 T7



COASTTM



GENERAL USE

HUNTING

PROFESSIONAL USE

TACTICAL USE

OUTDOOR USE

FISHING

GEAR



COAST'S General Use knives and tools are perfect for everyday tasks.

Tough 440C stainless steel, brass, stag bone, and rosewood; these are some of the materials that combine in this fine selection of pocketknives. Choose from our many classic styles or select state-of-the-art designs that feature the latest high-tech materials. From compact executive knives to big working knives, these folders are made of the finest cutlery steel and top-quality components. Keep them in pocket, purse, briefcase, your vehicle—they're always ready to open a package, cut a cord, or whatever job you need to get done.

C53B, C53R
3-IN-1 TOOL

- 440C stainless steel drop point blade
- Zytel™ handle
- Large nail nick for one-handed opening
- Includes LED light, bottle cap lifter
- 3 in. closed
- 4 in. overall
- Liner lock



C50S
LITE KNIFE

- Red LED in handle
- 440C stainless steel drop point blade with partial serration
- Anodized aluminum handle
- Thumb stud for one-handed opening
- 1.5 in. closed
- 3.5 in. overall
- Lockback



CG1204
KEY RING LOCKBACK

- 440C stainless steel drop point blade
- Zytel™ handle
- 2.5 in. closed
- 4.5 in. overall
- Lockback





**C102
COLT**

- 440C stainless steel clip point blade
- Rosewood handle
- 3.75 in. closed
- 6.75 in. overall
- Leather belt sheath
- Lockback



**C103
MUSTANG**

- 440C stainless steel clip point blade
- Rosewood handle
- 4.5 in. closed
- 8 in. overall
- Leather belt sheath
- Lockback



**C339
LARGE STOCKMAN**

- 440C stainless steel blades (clip, spey & sheepfoot)
- Nickel metal bolster with brass rivets and ABS handle scales
- 4 in. closed



**C329
MEDIUM STOCKMAN**

- 440C stainless steel blades (clip, spey & sheepfoot)
- Nickel metal bolster with brass rivets and ABS handle scales
- 3.5 in. closed



**C319
SMALL STOCKMAN**

- 440C stainless steel blades (clip, spey & sheepfoot)
- Nickel metal bolster with brass rivets and ABS handle scales
- 2.75 in. closed





C7200
LOCKBACK KNIFE

- 440C stainless steel clip point blade
- Lightweight aircraft aluminum handle with brass accents
- Thumb stud for one-handed opening
- 3.5 in. closed
- 6 in. overall
- Lockback



C7000T
LOCKBACK KNIFE

- Mirror polished 440C stainless steel clip point blade
- Brushed stainless steel handle
- 3 in. closed
- 5.5 in. overall
- Lockback



C10
ULTRA LIGHT KNIFE

- Titanium coated 440C stainless steel drop point blade
- Super slim cutout handle design
- Blade cutout for one-handed opening
- 3 in. closed
- 5 in. overall
- Liner lock



NEW!
C008
SERRATED FOLDER

- 440C stainless steel drop point blade with partial serration
- Rubberized handle
- Thumb stud for one-handed opening
- 4 in. closed
- 7 in. overall
- Belt clip
- Liner lock



NEW!
C36
TALON FOLDER

- 440C stainless steel blade
- Rubberized handle
- Thumb stud for one-handed opening
- 3.5 in. closed
- 6.5 in. overall
- Belt clip
- Liner lock





Big, strong, and rugged—that's how COAST hunting knives are built. Each blade is made of hot-drop forged 440C stainless steel. Handles come in a variety of materials, including natural hardwood and brass, stag bone, and sure-grip Kraton®. From our big Bowie to a variety of tough skinning knives, these field-tested knives are designed to be trusted companions in the great outdoors.



C9150
FOLDING SAW

- 440C stainless steel saw blade with double cut teeth
- Durable ABS handle with rubberized comfort grip
- Includes lanyard
- 6.25 in. closed
- 11 in. overall
- Safety button lock

C1104
FOLDING KNIFE

- Titanium coated 440C stainless steel drop point blade
- Wood handle scales
- Thumb stud for one-handed opening
- 4.875 in. closed
- 8.75 in. overall
- Liner lock

C8520SB
GRANDPA BRANDS
STAG BONE HUNTER

- 440C stainless steel trailing point blade
- Stag bone handle
- 7.5 in. overall
- Leather sheath



CSH-50
SKINNING KNIFE

- 440C stainless steel skinning blade
- Kraton™ rubber handle
- 9.5 in. overall
- Molded nylon sheath



C827SB
GRANDPA BRANDS
STAG BONE BOWIE

- 440C stainless steel Bowie blade
- Stag bone handle
- Brass & steel accents
- 13.25 in. overall
- Leather sheath



C652
HARDWOOD HUNTER

- 440C stainless steel trailing point blade
- Hardwood handle
- 7 in. overall
- Leather sheath



C602
SKINNING KNIFE

- 440C stainless steel skinning blade
- Hardwood handle
- Brushed stainless guard & pommel
- 8.5 in. overall
- Leather sheath



C927
BOWIE KNIFE

- 440C stainless steel Bowie blade
- Hardwood handle
- Brass guard & pommel
- 14 in. overall
- Leather sheath





C244301
DAMASCUS FOLDER

- Damascus stainless steel drop point blade
- Bead blasted stainless steel handle with Thuya wood inlay
- 3.75 in. closed
- 6.5 in. overall
- Liner Lock



C244305
DAMASCUS FOLDER

- Damascus stainless steel drop point blade
- Bead blasted stainless steel handle with Thuya wood overlay
- 4.5 in. closed
- 8 in. overall
- Liner Lock



C244501TH
DAMASCUS FOLDER

- Damascus stainless steel drop point blade
- Textured, anodized aluminum with Thuya wood inlay handle
- 4 in. closed
- 7 in. overall
- Liner Lock



The Beauty and Function of Damascus Steel

These Damascus bladed knives have 72 layers of stainless steel wrapped around 6 inner layers of carbon steel. These layers of steel are heated red hot, then twisted like rope to intertwine the 78 layers of steel. The result is the strongest blades available with an outer core of stainless steel and an inner core of carbon steel, which provides the fine cutting edge. Each blade has its own unique design as no two blades look exactly alike.

The combination of steels provides an ideal blade with the perfect degree of flexibility and toughness needed in a hunting knife.

These are the strongest, most durable production knives that we have ever created. These Damascus hunters are made to work and to last.



Blade steel folded for the second time in Damascus process

C244398
DAMASCUS SKINNER

- Damascus stainless steel hunting blade
- Genuine staghorn handle
- Brass and steel accents
- 9.5 in. overall
- Leather sheath

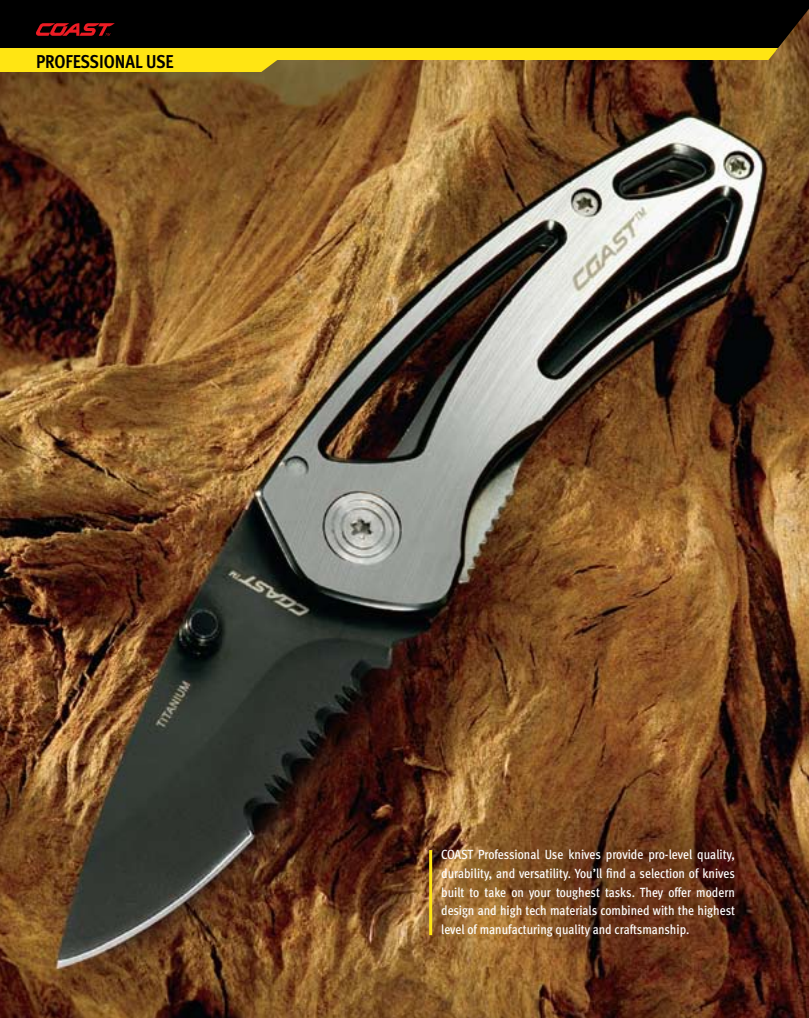
C244397
DAMASCUS BOWIE

- Damascus stainless steel hunting blade
- Genuine staghorn handle
- Brass and steel accents
- 11 in. overall
- Leather sheath



COAST

PROFESSIONAL USE



COAST Professional Use knives provide pro-level quality, durability, and versatility. You'll find a selection of knives built to take on your toughest tasks. They offer modern design and high tech materials combined with the highest level of manufacturing quality and craftsmanship.

NEW!

CG002PL
KEY RING LOCKBACK, BLACK HANDLE

- 440C stainless steel clip point blade with partial serration
- Textured Zytel™ handle
- Thumb stud for one-handed opening
- 2.5 in. closed
- 4.5 in. overall
- Lockback



NEW!

C20136PL
X-FRAME FOLDER

- 440C stainless steel drop point blade partial serration
- Cutout handle for lighter weight
- 3.5 in. closed
- 6 in. overall
- Belt clip
- Liner lock



COAST
KNIVES

PROFESSIONAL USE



LED in knife handle

LED Light



NEW LED Knife Technology

C7400
LED LOCKBLADE

- 440C stainless steel
- Drop point blade with partial serration
- Thumb-stud for one-handed opening
- Lightweight aluminum handle with sure grip inserts
- 5 in. closed
- 8 in. overall
- Lanyard hole
- Pocket clip
- Uses two (2) CR1620 batteries
- Liner lock

NEW!

CG004PL
LOCKBACK FOLDER, BLACK HANDLE

- 440C stainless steel clip point blade with serration
- Textured Zytel™ handle
- 4 in. closed
- 6.75 in. overall
- Belt clip
- Lockback



IMPROVED!

Now with Partial Serration

C22
Z-FRAME LARGE

- Titanium coated 440C stainless steel drop point blade with partial serration
- Brushed steel open-frame handles
- 3.5 in. closed
- 6 in. overall
- Belt clip
- Liner lock





C07
SKELETON FOLDER

- Titanium coated 440C stainless steel drop point blade
- Open-frame handle
- Thumb stud for one-handed opening
- 4.25 in. closed
- 7 in. overall
- Belt clip
- Liner lock



C02
LINER LOCK KNIFE

- Satin finished 440C stainless steel drop point blade Bead blasted handle with Kraton® inlay
- Sure-grip handle inserts
- Thumb stud for one-handed opening
- 4.25 in. closed
- 7.25 in. overall
- Belt clip
- Liner lock



C12
FOLDER

- Titanium coated 440C stainless steel drop point blade
- Incised design handle
- Thumb stud for one-handed opening
- 4.5 in. closed
- 7.75 in. overall
- Belt clip
- Liner lock



C21
Z-FRAME SMALL

- Titanium coated 440C stainless steel drop point blade
- Brushed steel open-frame handles
- Thumb stud for easy one-handed opening
- 2.5 in. closed
- 4.38 in. overall
- Liner lock



C05
BUTTON LOCK KNIFE

- 440C stainless steel clip point blade with partial serration
- Brushed stainless steel with Kraton® inlay handle
- Thumb stud for one-handed opening
- 4.25 in. closed
- 7.25 in. overall
- Belt clip
- Button lock



COAST

TACTICAL USE

Tactical Use knives are built to handle the highest level of day-in, day-out use as well as providing high performance tactical styling. We use high-quality blade steels, advanced performance-enhancing coatings, and lightweight handle materials that provide a secure grip without adding unnecessary weight. All of these products will accept a lanyard so it's easy to keep your most important tools close at hand.

Many COAST tactical use knives have been tested and approved for use by the U.S. Military. We are proud to produce these knives for our troops. These knives are designated with our Military Approved seal.



CUS100
RAPTOR TACTICAL/FIELD KNIFE

- Black powder coated 440C stainless steel
- Rubber handle
- Stainless steel finger guard
- Carbide tip for breaking Plexiglas®, plastic & glass
- Saw back cuts wood, PVC, nylon rope
- 11 in. overall
- Molded Kydex™ sheath



NEW!
C20136MB
X-FRAME FOLDER



- Titanium coated 440C stainless steel drop point blade with partial serration
- Cutout handle for lighter weight
- 6 in. overall
- 3.5 in. closed
- Belt clip
- Liner lock

COAST KNIVES

TACTICAL USE

NEW!



CG002BH
KEY RING LOCKBACK, BLACK HANDLE

- Titanium coated 440C stainless steel clip point blade with partial serration
- Textured Zytel™ handle
- Thumb stud for one-handed opening
- 2.5 in. closed
- 4.5 in. overall
- Lockback



NEW!



CG004BH
LOCKBACK FOLDER, BLACK HANDLE

- Titanium coated 440C stainless steel clip point blade with serration
- Textured Zytel™ handle
- Thumb stud for one-handed opening
- 4 in. closed
- 6.75 in. overall
- Belt clip
- Lockback



CG006
TITANIUM FOLDER

- Titanium coated 440C stainless steel clip point blade with partial serration
- Textured Zytel™ handle
- Thumb stud for one-handed opening
- 4 in. closed
- 7 in. overall
- Belt clip
- Lockback



NEW!

C03B
BLACK BUTTON LOCK KNIFE

- Titanium coated 440C stainless steel clip point blade with partial serration
- Titanium coated brushed stainless steel with Kraton® inlay handle
- Thumb stud for one-handed opening
- 4.25 in. closed
- 7.25 in. overall
- Belt clip
- Button lock



NEW!



C07B
BLACK SKELETON FOLDER

- Titanium coated 440C stainless steel drop point blade with partial serration
- Open-frame handle
- Thumb stud for one-handed opening
- 4.25 in. closed
- 7 in. overall
- Belt clip
- Liner lock



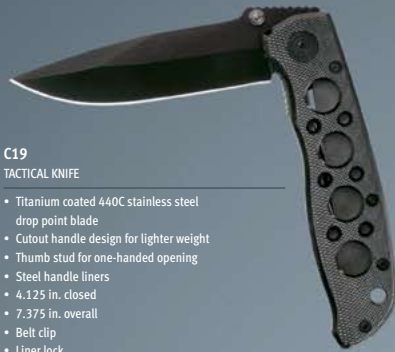
NEW!



C22B
BLACK Z-FRAME

- Titanium coated 440C stainless steel drop point blade with partial serration
- Open-frame handle
- 3.5 in. closed
- 6 in. overall
- Belt clip





C19
TACTICAL KNIFE

- Titanium coated 440C stainless steel drop point blade
- Cutout handle design for lighter weight
- Thumb stud for one-handed opening
- Steel handle liners
- 4.125 in. closed
- 7.375 in. overall
- Belt clip
- Liner lock



C20146
TITANIUM FOLDER

- Titanium coated 440C stainless steel drop point blade with partial serration
- Steel handle with rubberized coating
- Thumb stud for one-handed opening
- 3.25 in. closed
- 5.75 in. overall
- Liner lock



C04
TANTO LINER LOCK

- Bead blasted 440C stainless steel tanto point blade
- Brushed aluminum with Kraton® inlay
- Thumb stud for one-handed opening
- 4.75 in. closed
- 8.25 in. overall
- Belt clip
- Liner lock



C08
TITANIUM FOLDER

- Titanium coated 440C stainless steel drop point blade with partial serration
- Graphite handle
- Thumb stud for one-handed opening
- 4.25 in. closed
- 7 in. overall
- Belt clip
- Liner lock



COAST

OUTDOOR USE



Camping, hiking, climbing, biking—whatever your favorite outdoor adventure, COAST has the handy tools you'll want to take with you. They're all built tough—to stand up to the demands of outdoor (as well as indoor) use. Because we know size and weight is always at a premium during outdoor activities, many of our Outdoor Use products have multi-function capability. You get more tools in our products. Whether it's the multi-function Adventurer knife or one of our handy Exchange Blade camp cook sets, COAST has the outdoor tools you need.



NEW!

C3785

MULTI-FUNCTION OUTDOOR TOOL WITH COMPASS & LED LIGHT

- 440C stainless steel construction
- Red LED in handle
- Rubberized handle with COAST logo inlays
- 8 piece mini bit set
- Includes large knife blade, small knife blade, scissors, pliers, bottle opener, can opener, wire stripper, hole punch, hook, corkscrew, slotted screwdriver tip, mini slotted screwdriver tip, red LED in handle, fold-out compass in handle
- 3.5 in. closed



COAST KNIVES

OUTDOOR USE



C2040-5
CROCODILE

- Satin finished 440C stainless steel clip point blade
- Rubber inlay handle
- Solid bolsters & lining
- 3.75 in. closed
- 7.25 in. overall
- Nylon belt sheath
- Lockback



C2040-4
KANGAROO

- Satin finished 440C stainless steel clip point blade
- Rubber inlay handle
- Solid bolsters & lining
- 3.75 in. closed
- 6.75 in. overall
- Nylon belt sheath
- Lockback

NEW!

C5017
METAL COMMANDER

- Stainless steel blade and tools
- Textured aluminum handle
- Includes knife blade, file, mini screwdriver tip, springless scissors
- 2.25 in. closed
- 3.75 in. overall
- Key ring



NEW!

C5034
10-FUNCTION KNIFE

- Stainless steel blades and tools
- Textured aluminum handle
- Includes large knife blade, small knife blade, bottle opener, can opener, wire stripper, hole punch, slotted screwdriver tip, small slotted screwdriver tip, Phillips screwdriver tip, key ring
- 3.5 in. closed
- 6.25 in. overall



NEW!

C5037
11-FUNCTION KNIFE

- Stainless steel blades and tools
- Textured aluminum handle
- Includes large knife blade, small knife blade, scissors, bottle opener, can opener, wire stripper, hole punch, slotted screwdriver tip, small slotted screwdriver tip, saw blade, Phillips screwdriver tip, key ring
- 3.5 in. closed
- 6.25 in. overall





NEW!

C22SG
Z-FRAME LARGE

- Titanium coated 440C stainless steel drop point blade
- Brushed steel open-frame handles
- 3.5 in. closed
- 5.875 in. overall
- Belt clip
- Liner lock



C13
FOLDING KNIFE WITH CARABINER

- 440C stainless steel drop point blade
- Anodized aluminum handle
- Thumb stud for one-handed opening
- 4 in. closed
- 6.75 in. overall
- Carabiner clip on back
- Liner lock



C09
FOLDING KNIFE WITH CARABINER

- Titanium coated 440C stainless steel drop point blade
- Anodized aluminum handle
- Thumb stud for one-handed opening
- 3.75 in. closed
- 6.25 in. overall
- Belt clip
- Carabiner clip on back
- Liner lock



C3300
3-TOOL EXCHANGE BLADE CUTLERY KIT

- Stainless steel tools
- Includes cook's blade, spatula, 2 prong fork
- 2 comfort grip handles
- Nylon carry case



CG002
KEY RING LOCKBACK

- Titanium coated 440C stainless steel clip point blade with partial serration
- Textured Zytel™ handle
- Thumb stud for one-handed opening
- 2.5 in. closed
- 4.5 in. overall
- Lockback



CG004
LOCKBACK KNIFE

- Titanium coated 440C stainless steel clip point blade with partial serration
- Textured Zytel™ handle
- Thumb stud for one-handed opening
- 4 in. closed
- 6.75 in. overall
- Belt clip
- Lockback





COAST Fishing Knives are designed to give you top performance and value. From our Exchange Blade Fishing Set, which lets you pack more knives in less space, to a choice of fillet blades that will make quick work of your catch, you're sure to find the perfect knife to add to your tackle box.



C849
9 INCH FILLET

- "Flex" 440C stainless steel fillet blade with partial serration
- Kraton® handle
- 9 in. blade
- 14.5 in. overall
- Molded plastic sheath



C899
FOLDING FILLET

- "Flex" stainless steel fillet blade
- Zytel™ handle
- 7.5 in. closed
- 13 in. overall
- Lock back



C846
7 INCH FILLET

- "Flex" stainless steel fillet blade
- Kraton® handle
- 7 in. blade
- 12.5 in. overall
- Molded plastic sheath



C846X
ANGLER EXCHANGE BLADE FISHING SET

- 3 interchangeable stainless steel blades
- Exchange blade handle
- 6 in. fillet blade
- 5 in. boning blade
- 4 in. serrated bait cutting blade
- Nylon belt sheath





Protect your investment in COAST quality products with our selection of traditional leather and light-weight nylon sheaths. You'll also find a choice of sharpening tools—from the traditional Arkansas stone to our pocket-sized Diamond Sharpeners—plus our durable Utility Shears.



CM-1
LARGE DIAMOND SHARPENER

- Features diamond particle coated sharpening rod
- Sharpens knives, tools, scissors, even fish hooks



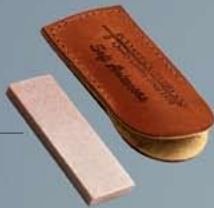
CM-2
MEDIUM DIAMOND SHARPENER

- Does everything the CM-1 does but in an even more compact size



C9550
UTILITY/FIELD SHEARS

- Includes shears, scissors, bone cutter, cap lifter, screwdriver tips
- Blades unhinge for easy cleaning
- Durable Cordura® nylon belt sheath



C14
SOFT ARKANSAS POCKET SHARPENING STONE

- Pocket sized natural Arkansas stone sharpens quickly and easily
- Designed for sharpening everything from pocketknives to craft and hobby instruments

LEATHER SHEATHS

- Durable, harness leather in oxblood color with heavy duty stitching
- Snap closure
- Embossed COAST logo

C300
SMALL LEATHER SHEATH



C200
MEDIUM LEATHER SHEATH



C100
LARGE LEATHER SHEATH



NYLON SHEATHS

- Durable nylon construction
- Heavy duty stitching, secure Velcro® closing
- Includes belt loop and embroidered COAST logo

CPB-100
GUSSETED SHEATH for large tools and knives



CPB-4
FLAT NYLON SHEATH with foldover closure



CPB-5
FLAT NYLON SHEATH with foldover closure



COASTTM



COAST

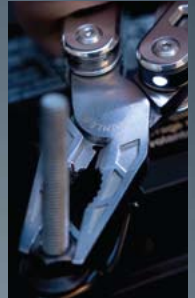
PROFESSIONAL USE



COAST Professional Use tools offer modern design and high tech materials combined with the highest level of manufacturing quality and craftsmanship. Our Professional Use multi-function tools are built to COAST'S demanding standards. These award-winning tools have become a top choice among consumers.



One LED illuminates knife edge



Second LED illuminates Pliers end

NEW!

C5899
2 LED PRO POCKET PLIERS™

- Two built-in LEDs, one at the front, one at the back, click to choose
- 440C stainless steel construction
- Spring-loaded pliers head for easy one-handed operation
- Full-sized knife blade with partial serration
- Sure-grip rubber handle inlays
- Also includes scissors, cap lifter, small and medium slotted screwdriver tips, Phillips screwdriver tip
- LED lights take 2 CR1616 batteries
- LED run time 10-15 hours
- 4 in. closed



Includes rigid sheath with belt loop



COAST MULTI-TOOLS

PROFESSIONAL USE

C5799
LED POCKET PLIERS™

- Built in LED light: click for constant on
- 440C stainless steel construction
- Sure grip rubber handle inlays
- Spring loaded pliers head for easy one-handed operation
- Includes LED light in handle, pliers, wire cutter, main knife blade, file blade with wire stripper, flathead screwdriver, awl, small flathead screwdriver, can opener with screwdriver tip, Phillips screwdriver, bottle opener with flathead screwdriver and wire stripper, saw blade, scissors
- Light takes two (2) CR1220 batteries
- LED run time 10-15 hours
- 4 in. closed



c2899
LED MICRO POCKET PLIERS™

- Built in LED light: click for constant on
- 440C stainless steel construction
- Sure grip rubber handle inlays
- Spring loaded pliers head for easy one-handed operation
- Includes LED light in handle, pliers, wire cutter, main knife blade, saw blade, key ring, Phillips screwdriver, bottle opener with flathead screwdriver tip and wire stripper, awl, file with nail pick, can opener with small flathead screwdriver tip
- Light takes two (2) CR927 batteries
- LED run time 8-10 hours
- 3 in. closed

C5089
23 FUNCTION
CARPENTER'S KNIFE

- 440C stainless steel construction
- Sure grip rubber handle inlays with COAST logo
- 8 piece mini bit set
- Includes knife blade, file blade, scissors, pliers, bottle opener, can opener, wire stripper, hole punch, hook, corkscrew, slotted screwdriver tip, mini slotted screwdriver, in handle: removable LED light, removable level
- 3.5 in. closed

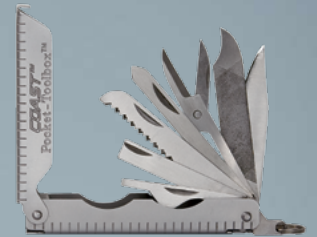


C3700
MICRO TOOLBOX™

- Bead blasted 440C stainless steel
- Includes 3 wrenches, bottle opener, knife blade with partial serration, file blade, nail pick, Springless Lever Action scissors, Phillips screwdriver, saw blade, large and small screwdrivers, ruler
- 2.5 in. closed
- Key ring

C3900
POCKET TOOLBOX™

- Bead blasted 440C stainless steel
- Includes 4 wrenches, bottle opener, knife blade with partial serration, file blade, nail pick, springless Lever Action scissors, Phillips screwdriver, saw blade, large and small screwdrivers, ruler
- 3.75 in. closed
- Key ring



COAST

TACTICAL USE



NEW!

C2899B BLACK LED MICRO PLIERS™



- Built in LED light: click for constant on
- 440C stainless steel construction
- Sure grip rubber handle inlays
- Spring loaded pliers head for easy one-handed operation
- Includes LED light in handle, pliers, wire cutter, main knife blade, saw blade, key ring, Phillips screwdriver, bottle opener with flathead screwdriver tip and wire stripper, awl, file with nail pick, can opener with small flathead screwdriver tip
- Light takes two (2) CR927 batteries
- LED run time 8-10 hours
- 3 in. closed



NEW!

C5799B BLACK LED POCKET PLIERS™



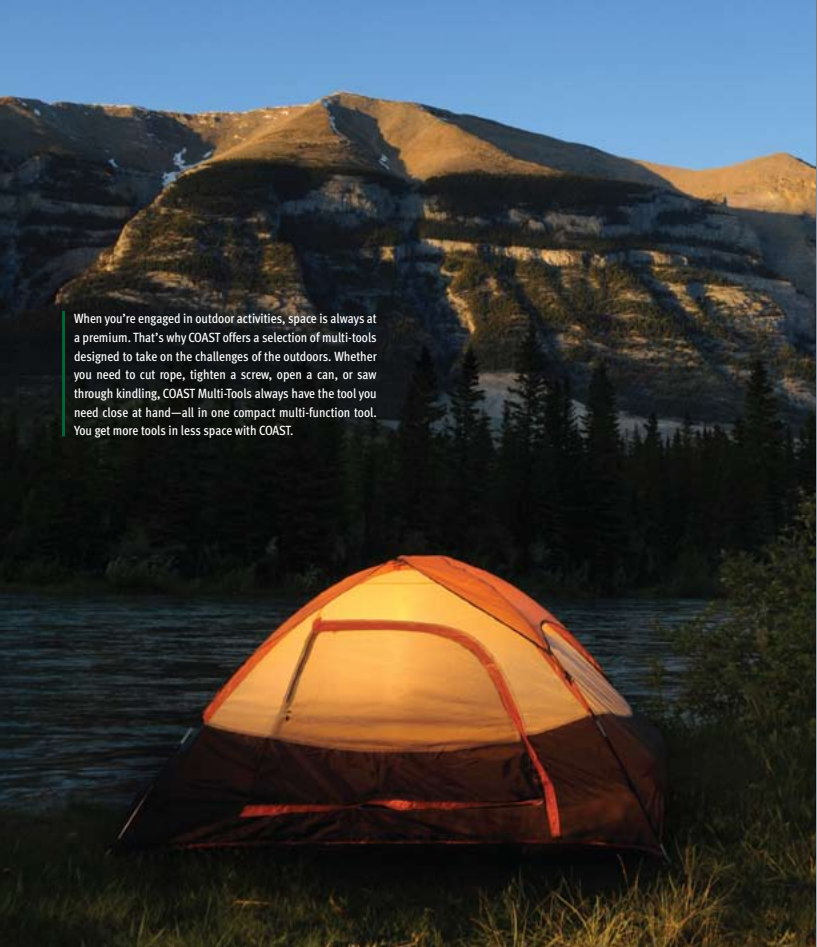
- Built in LED light: click for constant on
- 440C stainless steel construction
- Sure grip rubber handle inlays
- Spring loaded pliers head for easy one-handed operation
- Includes LED light in handle, pliers, wire cutter, main knife blade, file blade with wire stripper, flathead screwdriver, can opener with screwdriver tip, Phillips screwdriver, bottle opener with flathead screwdriver and wire stripper, saw blade, scissors
- Light takes two (2) CR1220 batteries
- LED run time 10-15 hours
- 4 in. closed

Includes rigid sheath with belt loop



COAST MULTI-TOOLS

TACTICAL USE



When you're engaged in outdoor activities, space is always at a premium. That's why COAST offers a selection of multi-tools designed to take on the challenges of the outdoors. Whether you need to cut rope, tighten a screw, open a can, or saw through kindling, COAST Multi-Tools always have the tool you need close at hand—all in one compact multi-function tool. You get more tools in less space with COAST.

C6100
FOLDING KNIFE TOOL

- Titanium coated 440C stainless steel drop point blade with partial serration
- Brushed steel cutout handles
- Thumb stud for one-handed opening
- Includes locking serrated mini scissors, Phillips head and slotted screwdrivers
- 4 in. closed
- 6.75 in. overall
- Belt clip
- Liner lock



C2795
MICRO PLIERS™

- 440C stainless steel construction
- Dual layer comfort handle—texturized edges inlaid into durable bead blasted aluminium
- Spring loaded pliers head for easy one-handed operation
- Includes pliers, wire cutter, small Phillips screwdriver, springless Lever Action scissors, small slotted screwdriver tip, knife blade, saw blade, cap lifter, and wire stripper
- 2.75 in. closed

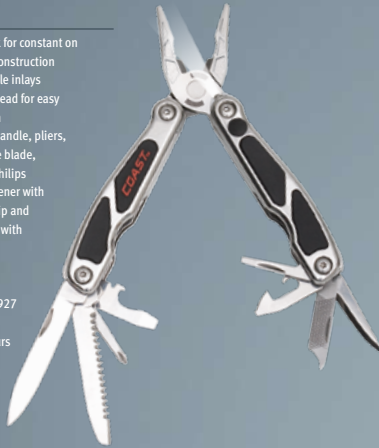




NEW!

C2899SG
LED MICRO PLIERS™

- Built in LED light: click for constant on
- 440C stainless steel construction
- Sure grip rubber handle inlays
- Spring loaded pliers head for easy one-handed operation
- Includes LED light in handle, pliers, wire cutter, main knife blade, saw blade, key ring, Phillips screwdriver, bottle opener with flathead screwdriver tip and wire stripper, awl, file with nail pick, can opener with small flathead screwdriver tip
- Light takes two (2) CR927 batteries
- LED run time 8-10 hours
- 3 in. closed



NEW!

C5799SG
LED POCKET PLIERS™

- Built in LED light: click for constant on
- 440C stainless steel construction
- Sure grip rubber handle inlays
- Spring loaded pliers head for easy one-handed operation
- Includes LED light in handle, pliers, wire cutter, main knife blade, file blade with wire stripper, flathead screwdriver, awl, small flathead screwdriver, can opener with screwdriver tip, Phillips screwdriver, bottle opener with flathead screwdriver and wire stripper, saw blade, scissors
- Light takes two (2) CR1220 batteries
- LED run time 10-15 hours
- 4 in. closed



Includes rigid sheath with belt loop





COAST Fishing tools provide a lot of function in a compact space. They are built to the highest COAST standards of manufacturing excellence and designed to provide top performance.

NEW!

FT3107
FLOATING LINE CUTTER

- Steel cutting blade cuts braided line
- Light weight plastic pliers
- Foam handle
- Includes lanyard
- Floatable



FT8500
FOLDING FISH TOOL & 12-PC. BIT SET

- 440C stainless steel construction
- Includes marlin spike, scissors, wire cutter, coarse and fine pliers, forceps-nose pliers, 3 sizes of crimpers for leaders, stops, and sleeves, main blade with partial serration, Phillips-head screwdriver, bottle opener, screwdriver tip and bit socket
- Locking blades for safety
- 12 piece bit set; 3 slotted, 3 Phillips, 6 hex
- Nylon case



Tool folds to carry in bit case



Bit set includes 3 slotted, 3 Phillips, 6 hex



MP2875
MICRO FISH TOOL

- 440C stainless steel construction
- Includes needle-nose pliers, leader cutter, saw, main blade, lever-action scissors, wire stripper, scraper, small Phillips screwdriver, small slotted screwdriver, file blade, fish hook eye cleaner, key ring
- Retractable lanyard attaches tool to fishing vest or pants



FT2401
TITANIUM SPLIT-RING PLIERS

- 440C stainless steel construction with titanium coating for extra durability
- Sure-grip spring-loaded handles
- Line cutter
- Safety lock
- Molded sheath

Molded sheath with belt loop and clip



FT6500
6 IN. PRO FISH PLIERS

- 440C stainless steel construction with titanium coating for extra durability
- Sure-grip handles
- Includes spring-loaded pliers, 3 crimpers for weights and brass sleeves, wire cutters, split-ring remover, lanyard



FTP8000
9 IN. PRO FISH PLIERS

- 440C stainless steel construction with titanium coating for extra durability
- Sure-grip handles
- Includes spring-loaded pliers, 3 crimpers for weights and brass sleeves, wire cutters, split-ring remover, lanyard



SPECIFICATIONS - LIGHTS

MODEL NUMBER	MODEL NAME	MAX. LUMENS	OVERALL SIZE (IN.)	WEIGHT (OZ.)	BATTERY TYPE/ BATTERY PRODUCT NUMBER	WORKING BATTERY LIFE	SHEATH TYPE	PAGE #
1006	V2 6 Chip Flashlight	85	6.25	5.50	3 x AAA TT7721CP	20	N/A	20
1041	Revolution Triplex Headlamp with VLT	60	N/A	4.20	3 x AAA TT7721CP	17	2018	47
1106	V2 6 Chip Dual Color Flashlight	80	6.25	6.00	3 x AAA TT7721CP	20	N/A	21
1189	V2 9 Chip Dual Color Flashlight	59	8.75	14.00	2 x C TT7723CP	100	N/A	19
7040	Personal Emergency Area Light	17	5.75	9.0	4 x AA TT7720CP	30	N/A	41
7041	6 Chip LED Headlamp	80	N/A	4.20	3 x AAA TT7721CP	20	2018	46
7044	Emergency Area Light	15	4.50	4.6	4 x AAA TT7721CP	40	N/A	39
7050	4-C Emergency Area Light	60	5.75	16.06	4 x C TT7723CP	50	N/A	41
7124HGB	Emergency Area Light	125	8.25	32.02	4 x D TT7724CP	100	N/A	40
7300	Laser Pointer	N/A	2.30	.8	3 x AG5 TT7714CP	4	N/A	29
73455	V ² 6 Chip Tactical	80	4.50	3.80	3 x AAA TT7721CP	20	2002 2009	37
7438	Tactical Focus Beam	115	5.00	5.60	3 x AAA TT7721CP	52	2001, 2026, 2027, 2028, 2029, 5451	28
7451	Micro Headlamp	13	N/A	1.40	1 x AAA TT7721CP	6.5	2019	47
7456	D14 Waterproof Flashlight	150	6.25	12.80	4 x AA TT7720CP	20	N/A	33

SPECIFICATIONS - LIGHTS

MODEL NUMBER	MODEL NAME	MAX. LUMENS	OVERALL SIZE (IN.)	WEIGHT (OZ.)	BATTERY TYPE/ BATTERY PRODUCT NUMBER	WORKING BATTERY LIFE	SHEATH TYPE	PAGE #
7468	Revolution Headlamp with VLT	110	N/A	4.20	3 x AAA TT7721CP	4	2018	46
7494	H4 3x5 mm LED Headlamp	30	8.75	3.00	3 x AAA TT7721CP	15	N/A	44
7495	H5 Focusing Headlamp	26	N/A	4.20	3 x AAA TT7721CP	11	2018	44
7497	H7 Focusing Headlamp with VLT	170	N/A	4.40	3 x AAA TT7721CP	15	2018	45
7498	H7R Rechargeable Focusing Headlamp with VLT	170	N/A	4.40	3 x AAA Ni-MH Rechargeable TT6105CP	3.5	2018	45
7499	H14 Headlamp	200	N/A	12.4	4 x AA TT7720CP	2.5	N/A	43
75331	Clip Light	10	4.10	2.20	1 x AAA TT7721CP	3	N/A	25
7533/2	Camp Light	12	5.50 in. Body 5.13 in. Rod	2.50	2 x AA TT7720CP	24	2007	39
7547 7547BL	V2 Triplex	30	6.00	3.60	2 x AA TT7720CP	16	2008	22
7550	V8 Standard Torch (red beam)	1.5	2.25	1.00	2 x AG13 TT7701CP	7	N/A	23
7553BL	V8 Standard Torch	12	2.25	.50	3 x AG13 TT7701CP	9	N/A	23
7575	Auto LED	13	1.90	9.40	4 x 20H NI-MH TT7702CP	.5	N/A	29
7578BL	Micro Flex Light	6	6.00	.80	4 x AG13 TT7701CP	1.3	N/A	25
7582BL	Small Flex Light	13	6.00	2.80	4 x AG13 TT7701CP	4	N/A	25
7583BL	Medium Flex Light	13	11.00	4.20	1 x AAA TT7721CP	6	N/A	25



SPECIFICATIONS - LIGHTS

MODEL NUMBER	MODEL NAME	MAX. LUMENS	OVERALL SIZE (IN.)	WEIGHT (OZ.)	BATTERY TYPE/ BATTERY PRODUCT NUMBER	WORKING BATTERY LIFE	SHEATH TYPE	PAGE #
7730	V6 Stainless Steel Power Chip	110	4.12	7.80	3 x AAA TT7721CP	37	2002	32
7732	V6 Stainless Steel 6 Chip	135	3.62	7.20	3 x AAA TT7721CP	48	2002	32
7732DUV	V ⁶ 6 Chip Dual Color Ultraviolet Light	70	3.43	6.20	3 x AAA TT7721CP	52	2002 2009	29
77364	Signal Light	Red: 3.8 Blue: 1.2 Green: 7.5 White: 70	4.00	6.20	3 x AAA TT7721CP	Red: 70 Blue: 360 Green: 315 White: 52	2002 2009	36
7736	V ⁶ Tactical Power Chip Torch	110	4.50	6.40	3 x AAA TT7721CP	37	2003	36
7736D	V ⁶ 6 Chip Dual Color Tactical Torch	120	3.70	6.20	3 x AAA TT7721CP	44	2002 2009	37
7736TS	Power Chip Tactical Light	115	5.00	5.40	3 x AAA TT7721CP	52	2001, 2026 2027, 2028 2029, 2451	35
7817	Inspection Light	9	5.50	2.00	2 x AAA TT7721CP	24	2021	22
7830	Mini Tac	20	3.50	.80	1 x AAA TT7721CP	6	N/A	24
7831	Mini Tac	20	3.50	.80	1 x AAA TT7721CP	6	N/A	24
7839	Nano Tac Torch	12	2.50	1.60	4 x AG5 TT7714CP	1	N/A	23
7853	Digital Rechargeable Focus Beam	127	4.70	2.60	1 x CR14500 TT7792CP	2 (Charge life)	2020	27
8307R	M7R	Max 220 High 180 Low 30	6.00	7.20	1 x ICR18650 Li-ion TT6102CP	High 12 Low 20.5	Case	51
8307T	MT7	Max 220 High 180 Low 30	5.75	6.80	4 x AAA TT7723CP	High 3.50 Low 11	N/A	51
8313	K3	15	2.50 (2.75 ext.)	1.20	4 x AG13 TT7701CP	2	N/A	56
8402	P2	14	3.75 (4.00 ext.)	1.40	1 x AAA TT7721CP	6.50	N/A	59

SPECIFICATIONS - LIGHTS

MODEL NUMBER	MODEL NAME	MAX. LUMENS	OVERALL SIZE (IN.)	WEIGHT (OZ.)	BATTERY TYPE/ BATTERY PRODUCT NUMBER	WORKING BATTERY LIFE	SHEATH TYPE	PAGE #
8403	P3	16	3.75 (3.95 ext.)	1.60	1 x AAA TT7721CP	6.5	N/A	57
8404	P4	20	5.50 (5.75 ext.)	2.20	2 x AAA TT7721CP	3.5	N/A	59
8405	P5	105	4.50 (4.75 ext.)	3.00	1 x AA TT7720CP	3	5717	57
8406	P6	130	6.50 (6.75 ext.)	4.40	2 x AA TT7720CP	8	5714	56
8407	P7	Max 200 High 150 Low 30	5.25 (5.50 ext.)	7.00	4 x AAA TT7721CP	High 55 Low 64	5715	53
8414	P14	Max 210 High 155 Low 33	8.00 (8.50 ext.)	13.80	4 x AA TT7720CP	High 104 Low 84	5713	53
8417	P17	Max 220 High 190 Low 40	12.50 (13.00 ext.)	12.40	3 x D TT7724CP	High 385 Low 480	N/A	55
8420	T7	Max 200 High 150 Low 30	5.50 (5.75 ext.)	7.20	4 x AAA TT7721CP	High 55 Low 64	5715	54
8421	T5	105	4.50 (4.75 ext.)	3.20	1 x AA TT7720CP	3	5716	54
8437	X21	High 1300 Low 230	15.50 (16.50 ext.)	48.00	4 x D TT7724CP	High 155 Low 244	N/A	50
8604	L4	25	5.50	4.00	3 x AAA TT7721CP	26	N/A	31
8606	L6	105	6.25	4.50	2 x AA TT7720CP	8	N/A	31
8607	L7	105	5.50	4.50	3 x AAA TT7721CP	42	N/A	30
8705	P5R	High 210 Low 18	4.50 (4.75 ext.)	2.60	1 x ICR14500 TT6103CP	High 3 Low 7	5717	52
8737	X21R	Max 1500 High 1250 Low 280	15.75 (16.50 ext.)	48.00	4 x D Ni-MH Rechargeable TT6100CP	High 5.5 Low 10	N/A	49



TESTED | HARDNESS SHARPNESS



TESTED | HARDNESS SHARPNESS

SPECIFICATIONS - KNIVES

MODEL NUMBER	BLADE SIZE (IN.)	HANDLE SIZE (IN.)	WEIGHT (OZ.)	OVERALL SIZE (IN.)	LOCK SYSTEM	BLADE MATERIAL	HANDLE MATERIAL	SHEATH TYPE	LANYARD HOLE	PAGE #
C008	3.00	4.00	1.00	7.00	liner lock	440C stainless steel	rubberized	N/A	yes	73
C02	3.00	4.25	4.80	7.25	liner lock	D1.4 cutlery steel	brushed aluminum w/Kraton® inlay	N/A	yes	84
C03B	3.00	4.25	3.20	7.25	button lock	titanium coated 440C stainless steel	440 stainless steel w/Kraton® inlay	N/A	yes	89
C04	3.50	4.75	5.60	8.25	liner lock	D1.4 cutlery steel	brushed aluminum w/Kraton® inlay	N/A	yes	91
C05	3.00	4.25	3.60	7.25	button lock	440C stainless steel	brushed aluminum w/Kraton® inlay	N/A	yes	85
C07	2.75	4.25	3.20	7.00	liner lock	titanium coated 440C stainless steel	powder coated	N/A	yes	84
C07B	2.75	4.25	3.20	7.00	liner lock	titanium coated 440C stainless steel	powder coated	N/A	yes	89
C08	3.00	4.25	2.60	7.25	liner lock	titanium coated 440C stainless steel	graphite	N/A	yes	91
C09	2.50	3.75	2.80	6.25	liner lock	440C stainless steel	aluminum	N/A	yes	96
C10	2.00	3.00	1.00	5.00	liner lock	440C stainless steel	textured aluminum	N/A	yes	73
C102	3.00	3.75	3.00	6.75	lockback	440C stainless steel	rosewood	leather belt sheath	yes	70
C103	3.50	4.50	3.80	8.00	lockback	440C stainless steel	rosewood	leather belt sheath	yes	70
C1104	4.00	4.88	5.20	8.88	liner lock	titanium coated 440C stainless steel	wood handle scales	N/A	yes	75

SPECIFICATIONS - KNIVES

MODEL NUMBER	BLADE SIZE (IN.)	HANDLE SIZE (IN.)	WEIGHT (OZ.)	OVERALL SIZE (IN.)	LOCK SYSTEM	BLADE MATERIAL	HANDLE MATERIAL	SHEATH TYPE	LANYARD HOLE	PAGE #
C12	3.25	4.50	5.20	7.75	liner lock	titanium coated 440C stainless steel	incised design	N/A	no	85
C13	2.75	4.00	2.80	6.75	liner lock	440C stainless steel	anodized aluminum	N/A	no	96
C19	3.25	4.13	3.00	7.38	liner lock	titanium coated 440C stainless steel	steel handle liners	N/A	yes	90
C20136PL	2.50	3.50	3.00	6.00	liner lock	440C stainless steel	aluminum	N/A	yes	81
C20136MB	2.50	3.50	3.00	6.00	liner lock	titanium coated 440C stainless steel	aluminum	N/A	yes	87
C20146	2.50	3.25	1.60	5.75	lockback	titanium coated 440C stainless steel	rubberized coating	N/A	yes	90
C2040-4	3.00	3.75	3.00	6.75	lockback	440C satin finished stainless steel	rubber inlay	nylon belt	yes	94
C2040-5	3.50	3.75	3.60	7.25	lockback	440C satin finished stainless steel	rubber inlay	nylon belt	yes	94
C21	2.00	2.50	1.00	4.38	liner lock	titanium coated 440C stainless steel	stainless steel	N/A	yes	85
C22	2.25	3.50	3.00	6.00	liner lock	titanium coated 440C stainless steel	brushed stainless steel open frame	N/A	no	83
C22B	2.25	3.50	3.00	6.00	liner lock	titanium coated 440C stainless steel	brushed stainless steel open frame	N/A	yes	89
C225G	2.25	3.50	3.00	6.00	liner lock	titanium coated 440C stainless steel	brushed stainless steel open frame	N/A	yes	96
C36	3.00	3.50	1.50	6.50	liner lock	440C stainless steel	rubberized	N/A	yes	73



SPECIFICATIONS - KNIVES

MODEL NUMBER	BLADE SIZE (IN.)	HANDLE SIZE (IN.)	WEIGHT (OZ.)	OVERALL SIZE (IN.)	LOCK SYSTEM	BLADE MATERIAL	HANDLE MATERIAL	SHEATH TYPE	LANYARD HOLE	PAGE #
C244301	3.00	3.75	3.20	6.50	liner lock	damascus	thuya wood bead blasted stainless steel	N/A	yes	78
C244305	3.50	4.50	5.00	8.00	liner lock	damascus	thuya wood bead blasted stainless steel	N/A	yes	78
C244397	6.50	4.50	11.00	11.00	N/A	damascus	stag	leather	no	79
C244398	6.50	4.50	11.00	9.50	N/A	damascus	stag	leather	no	79
C244501TH	3.00	4.00	3.20	7.00	liner lock	damascus	thuya wood anodized aluminum	no	no	78
C319	2.50 1.75	2.75	1.40	5.25	N/A	440C stainless steel	nickel metal bolster with brass rivets and Kraton® scales	N/A	no	71
C329	2.50 1.75	3.50	2.40	6.00	N/A	440C stainless steel	nickel metal bolster with brass rivets and Kraton® scales	N/A	no	71
C3300	6.00	6.00	27.80	12.00	modular	440C stainless steel	ABS	nylon carry case	no	97
C3785	2.50 main 1.50 small	3.50	5.00	6.00	N/A	440C stainless steel	rubberized	no	yes	93
C339	3.00 2.25	4.00	3.00	6.75	N/A	440C stainless steel	nickel metal bolster with brass rivets and Kraton® scales	N/A	no	71
C5017	1.50	2.25	.50	3.75	N/A	440C stainless steel	textured aluminum	N/A	yes	95
C5034	2.50 main 1.50 small	3.50	2.00	6.25	N/A	440C stainless steel	textured aluminum	N/A	yes	95
C5037	2.50 main 1.50 small	3.50	3.50	6.25	N/A	440C stainless steel	textured aluminum	N/A	yes	95

SPECIFICATIONS - KNIVES

MODEL NUMBER	BLADE SIZE (IN.)	HANDLE SIZE (IN.)	WEIGHT (OZ.)	OVERALL SIZE (IN.)	LOCK SYSTEM	BLADE MATERIAL	HANDLE MATERIAL	SHEATH TYPE	LANYARD HOLE	PAGE #
C505	2.00	1.50	1.60	3.50	lockback	440C stainless steel	aluminum powder	N/A	yes	69
C53B	1.00	3.00	1.20	4.00	liner lock	440C stainless steel	Zytel™	N/A	yes	69
C53R	1.00	3.00	1.20	4.00	liner lock	440C stainless steel	Zytel™	N/A	yes	69
C602	4.50	4.00	4.20	8.50	N/A	440C stainless steel	hardwood	leather	no	77
C652	4.00	3.00	3.40	7.00	N/A	440C stainless steel	hardwood	leather	yes	77
C7000T	2.50	3.00	1.80	5.50	lockback	440C stainless steel	mirror polished	N/A	yes	72
C7200	2.50	3.50	2.20	6.00	lockback	440C stainless steel	aircraft aluminum	N/A	yes	72
C7400	3.25	5.00	4.50	8.25	liner lock	440C stainless steel	lightweight aluminum	N/A	yes	82
C8275B	8.50	4.75	12.80	13.25	N/A	440C stainless steel	stag	leather	no	76
C846	7.00	5.25	5.20	12.50	N/A	440C stainless steel	Kraton®	molded ABS	yes	100
C846X	6.00 fillet 5.00 boning 4.00 serrated	4.75	11.20	12.25 11.25 10.75	interchangeable	440C stainless steel	ABS	nylon	no	101
C849	9.00	5.25	5.80	14.50	N/A	440C stainless steel	Kraton®	molded ABS	yes	99
C85205B	4.00	3.50	3.80	7.50	N/A	440C stainless steel	stag	leather	yes	76
C899	7.00	7.50	2.80	13.00	lockback	440C stainless steel	ABS	N/A	yes	100
C9150	4.75	6.25	4.20	11.00	safety button lock	440C stainless steel	ABS handle with rubberized grip	nylon belt	yes	75



TESTED | HARDNESS SHARPNESS



TESTED | HARDNESS SHARPNESS

SPECIFICATIONS - KNIVES

MODEL NUMBER	BLADE SIZE (IN.)	HANDLE SIZE (IN.)	WEIGHT (OZ.)	OVERALL SIZE (IN.)	LOCK SYSTEM	BLADE MATERIAL	HANDLE MATERIAL	SHEATH TYPE	LANYARD HOLE	PAGE #
C927	8.50	4.50	17.20	14.00	N/A	440C stainless steel	hardwood	leather	yes	77
C9550	5.00	4.00	3.00	9.00	N/A	440C stainless steel	N/A	nylon belt	no	104
CG002	2.00	2.50	1.00	4.50	lockback	440C stainless steel	textured Zytel™	N/A	yes	97
CG002BH	2.00	2.50	1.00	4.50	lockback	titanium 440C stainless steel	textured Zytel™	N/A	yes	88
CG002PL	2.00	2.50	1.00	4.50	lockback	440C stainless steel	textured Zytel™	N/A	yes	81
CG004	2.75	4.00	1.80	6.75	lockback	440C stainless steel	textured Zytel™	N/A	yes	97
CG004BH	2.75	4.00	1.80	6.75	lockback	titanium 440C stainless steel	textured Zytel™	N/A	yes	88
CG004PL	2.75	4.00	1.80	6.75	lockback	440C stainless steel	textured Zytel™	N/A	yes	83
CG006	3.00	4.00	2.20	7.00	lockback	440C stainless steel	textured Zytel™	N/A	yes	88
CG1204	2.00	2.50	0.60	4.50	lockback	440C stainless steel	Zytel™	N/A	yes	69
CSH-50	5.00	4.50	6.40	9.50	N/A	440C stainless steel	Kraton®	molded nylon	no	76
CJS-100	6.00	5.00	7.40	11.00	N/A	440 stainless steel black powder coating	rubber	molded Kydex®	yes	86

SPECIFICATIONS - MULTI-TOOLS

MODEL NUMBER	BLADE SIZE (IN.)	HANDLE SIZE (IN.)	WEIGHT (OZ.)	OVERALL SIZE (IN.)	LOCK SYSTEM	BLADE MATERIAL	HANDLE MATERIAL	SHEATH TYPE	LANYARD HOLE	PAGE #
C2795	2.00	2.75	2.00	4.50	N/A	440C stainless steel	aluminum/plastic	N/A	no	115
C2899	2.25	3.00	4.40	4.50	N/A	440C stainless steel	stainless/rubber	no	no	110
C2899B	2.25	3.00	4.40	4.50	N/A	440C stainless steel	stainless/rubber	no	yes	113
C2899SG	2.25	3.00	4.40	4.50	N/A	440C stainless steel	stainless/rubber	no	yes	116
C3700	1.75	2.25	1.60	4.00	N/A	440C stainless steel	bead blasted	N/A	yes	111
C3900	2.50	3.25	3.20	6.00	N/A	440C stainless steel	bead blasted	N/A	yes	111
C5089	2.50	3.50	5.00	6.00	N/A	440C stainless steel	rubberized	nylon belt	yes	111
C5799	2.00	4.00	11.80	6.00	N/A	440C stainless steel	stainless/rubber	molded EVA	no	110
C5799B	2.00	4.00	11.80	6.00	N/A	440C stainless steel	stainless/rubber	molded EVA	no	113
C5799SG	2.00	4.00	11.80	6.00	N/A	440C stainless steel	stainless/rubber	molded EVA	no	117
C5899	3.25	4.13	9.80	7.25	liner lock	440C stainless steel	stainless/rubber	molded EVA	no	109
C6100	2.75	4.00	4.25	6.75	liner lock	titanium coated 440C stainless steel	brushed steel	N/A	no	115
FT2401	N/A	N/A	3.20	5.00	N/A	titanium coated 400C stainless steel	ABS	molded EVA	yes	120
FT3107	N/A	N/A	2.40	7.40	N/A	N/A	plastic / foam	N/A	yes	119
FT8500	3.25	4.75	13.60	8.00	N/A	440C stainless steel	bead blasted/rubber	nylon	yes	119
FT6500	N/A	N/A	6.20	7.00	N/A	titanium coated 440C stainless steel	rubberized	N/A	yes	121
FTP8000	N/A	N/A	7.60	8.75	N/A	titanium coated 400C stainless steel	rubberized	no	yes	121
MP2875	1.50	2.75	2.60	4.50	N/A	440C stainless steel	bead blasted/rubber	no	yes	120

