

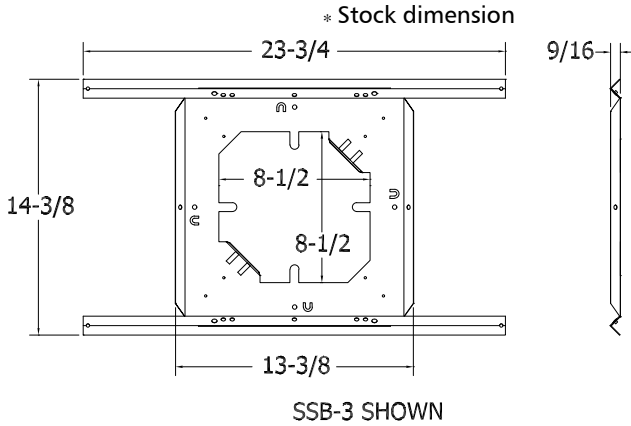


Quam

SSB-2, SSB-3, SSB-4 SSB-6, SSB-7, SSB-9 SSC-1

Loudspeaker Mounting Devices

0402 - LOUDSPEAKER MOUNTING DEVICES



SSB-3 SHOWN

GENERAL DESCRIPTION

The Quam SSB-(2, 3, 4, 6, 7, 9) is a rust resistant steel, load bearing support for a loudspeaker assembly.

The Quam SSC-1 is a pair of rust resistant steel, load bearing mounting channels.

INTENDED USE

SSB-(2, 3, 4, 6, 9): Parallel to floor plane in a suspended ceiling structure; maximum span of 24" in one dimension; indoor environment. Refer to schedule on reverse for frame compatibility.

SSB-7: 8" frame loudspeaker, new gypsum board construction; indoor environment.

SSC-1: Gypsum board or drop tile ceiling applications; indoor environment.

* 23-3/4" Stock dimension, lengths up to 48" available on SSB-2, 3, 4, 6, 9 and SSC-1 as a special order, please contact Factory for delivery and pricing

RECOMMENDED ADDITIONAL QUAM COMPONENTS

Refer to schedule on reverse for frame compatibility

SYSTEM COMPONENTS

N/A

MECHANICAL DIMENSIONS

Refer to reverse side

Recommended construction sequences, installation instructions and A&E Specifications are available in various formats on the Quam Architects' and Engineers' Resources CD or on the web at: www.quamspeakers.com

BACK BOXES / MOUNTING DEVICES

04

Quam-Nichols Company

234 East Marquette Road, Chicago, IL 60637
Phone: (800) NEED NOW Fax: (888) NEED NOW
(800) 633 - 3669 (888) 633 - 3669
E-Mail: neednow@qnc.com www.quamspeakers.com



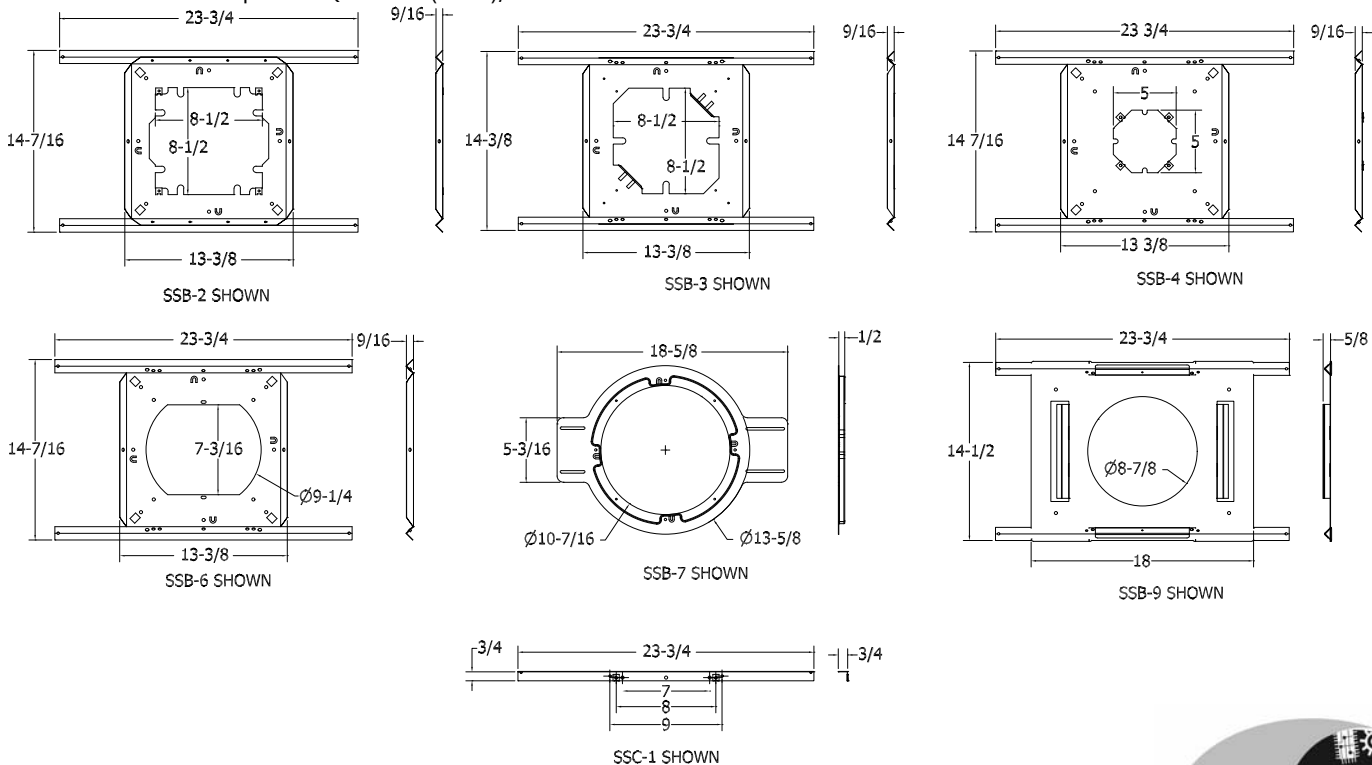


Quam

0402 - LOUDSPEAKER MOUNTING DEVICES

	SSB-2	SSB-3	SSB-4	SSB-6	SSB-7	SSB-9	SSC-1
BAFFLES							
BR4W			✓				✓
BR4WS			✓				✓
BR8-2WS				✓			
BR8A	✓	✓			✓		✓
BR8VP	✓	✓			✓		
BR8W	✓	✓			✓		✓
BR8WC	✓	✓			✓		✓
BR8WP	✓	✓			✓		✓
BR8WS	✓	✓			✓		✓
BS8VP	✓	✓					
BS8W	✓	✓					
BS8WS	✓	✓					
TBR8W		✓					
TBR8WS		✓					
QMount™						✓	

NOTE: With the exception of QMount™ (SSB-9), all SSB assemblies can use ERD-8 or ERDU back boxes



04 BACK BOXES / MOUNTING DEVICES

Quam-Nichols Company

234 East Marquette Road, Chicago, IL 60637
 Phone: (800) NEED NOW Fax: (888) NEED NOW
 (800) 633 - 3669 (888) 633 - 3669
 E-Mail: neednow@qnc.com www.quamspeakers.com



SSB-2 Loudspeaker Assembly Support (Tile Bridge) for Ceiling Tile Installations For all QUAM 8" Loudspeakers and others.

INTENDED USE:

Indoor environment, mounted parallel to floor plane in a 24" wide suspended ceiling tile grid.

Used with compatible round and square baffles with stud or screw mount.

Select your installation option from the list below:

1. BACKBOX and ROUND or SQUARE Baffle Installation:

- Refer to back box instructions for details

Complete Tile preparation and Baffle installation with either instructions #2 or #3

2. ROUND Baffle Installation *without* back can:

- Cut 8-1/2" square hole in tile using tile bridge as a template as shown **Figure A**.
- Position tile bridge on TOP of tile, legs like: Λ
- Bend 8x locator tabs around tile in opening
- Install speaker /baffle on opposite of ceiling tile and fasten to tile bridge/tile assembly with 4x #8-32 screws provided with speaker/baffle assembly.

3. SQUARE Baffle Installation *without* back can:

Figure B: Move 'J-nuts' from Pos. 1 to Pos. 2

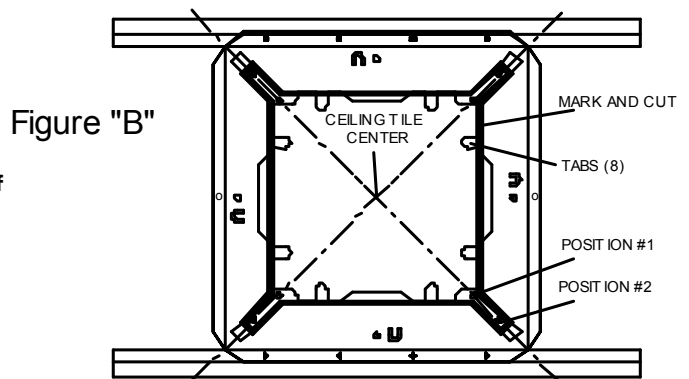
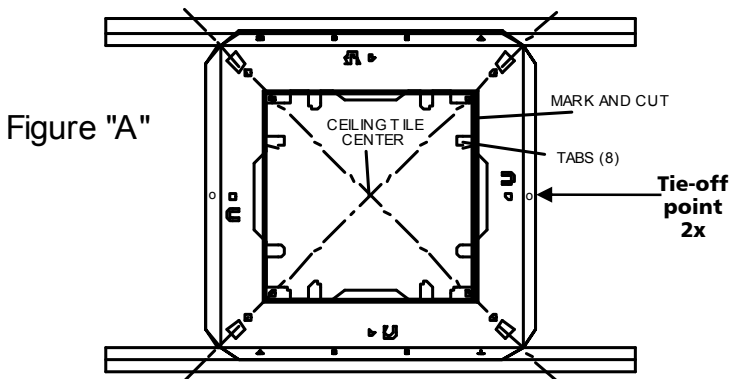
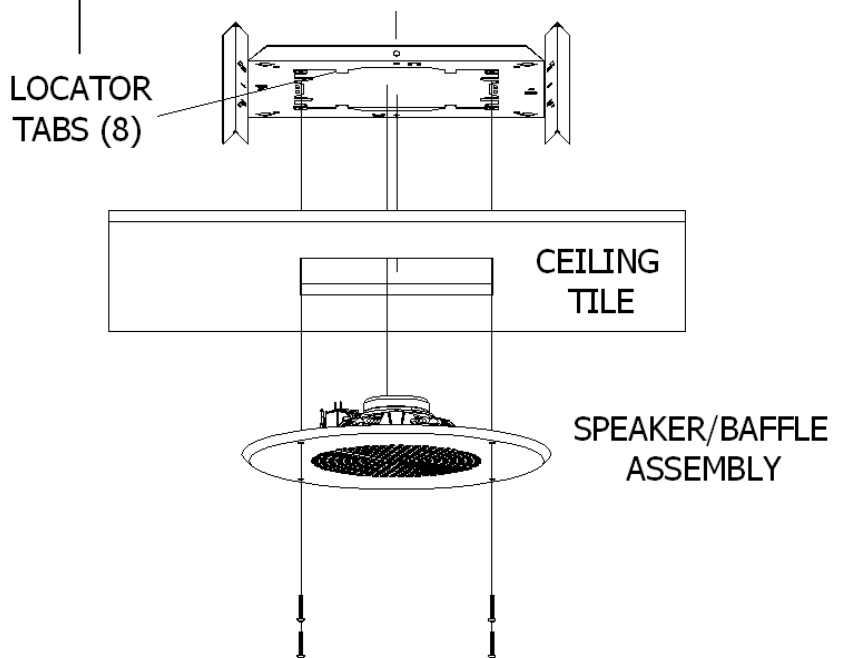
- Cut 8-1/2" square hole in tile using tile bridge as a template, with accessory cuts as shown in **Figure B** to access "J-nuts".
- Position tile bridge on TOP of tile, legs like: Λ
- Bend 8x locator tabs around tile in opening
- Install speaker /baffle on opposite of ceiling tile and fasten to tile bridge/tile assembly with 4x #8-32 screws provided with speaker/baffle assembly.

- Refer to loudspeaker assembly for proper termination, or go to www.QuamSpeakers.com / Resources/ Wiring

- Insulate all unused taps from each other, the enclosure and electrical ground.

NOTE! AHJ/ local codes may require tie-off to structure.
Tie-off to tile bridge frame using hole provided; see arrow on diagram.

NOTE! AHJ/ local codes may require tie-down to grid
Create a hole in the T-bar next to the end of the tile bridge rails; secure with wire through the hole in the end of the



Quam

234 East Marquette Road, Chicago, IL 60637
 Phone: (800) NEED NOW Fax: (888) NEED NOW
 (800) 633 - 3669 (888) 633 - 3669
 E-Mail: neednow@qnc.com www.quamspeakers.com



SSB-3 Loudspeaker Assembly Support (Tile Bridge) for Ceiling Tile Installations For all QUAM 8" Loudspeakers and others.

INTENDED USE:

Indoor environment, mounted parallel to floor plane in a 24" wide suspended ceiling tile grid.

Used with compatible round and square baffles with stud or screw mount; also suitable for torsion QUAM mount loudspeakers.

Select your installation option from the list below:

1. BACKBOX and ROUND or SQUARE Baffle Installation:

- Refer to back box instructions for details.

Complete Tile preparation and Baffle installation with either instructions #2 or #3

2. ROUND Baffle Installation without back can:

- Cut 8-1/2" square hole in tile using tile bridge as a template, see **LEFT HAND** diagram below.
- Position tile bridge on **TOP** of tile, legs like: **Λ**
- Bend 4x locator tabs around tile in opening
- Install speaker/baffle on opposite of ceiling tile and fasten to tile bridge/tile assembly with 4x #8-32 screws provided with speaker/baffle assembly.

3. SQUARE Baffle Installation without back can:

- Cut 8-1/2" square hole in tile using tile bridge as a template, with accessory cuts as shown in **RIGHT-HAND** diagram below to access formed threads.
- Position tile bridge on **TOP** of tile, legs like: **Λ**
- Bend 4x locator tabs around tile in opening
- Install speaker/baffle on opposite of ceiling tile and fasten to tile bridge/tile assembly with 4x #8-32 screws provided with speaker/baffle assembly.

Installation of a Torsion Mount Assembly:

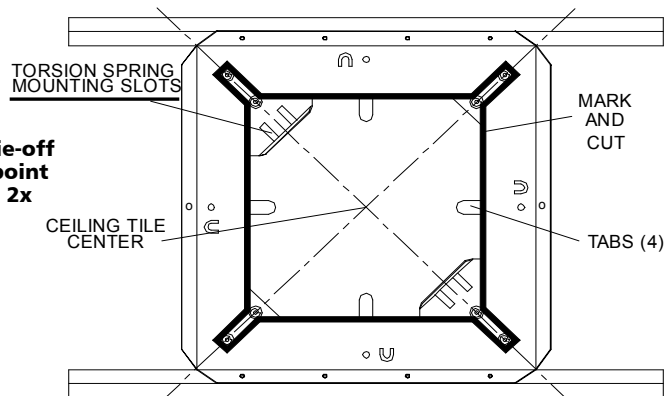
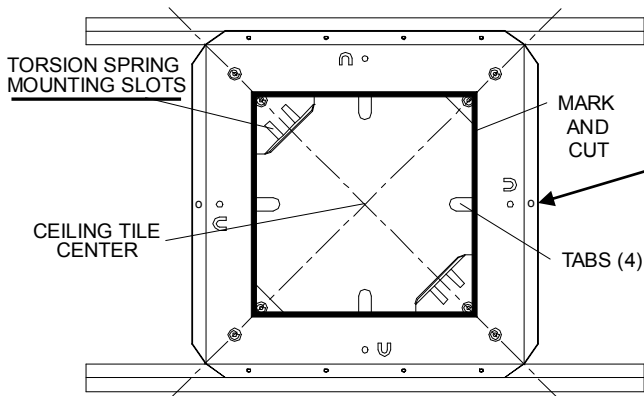
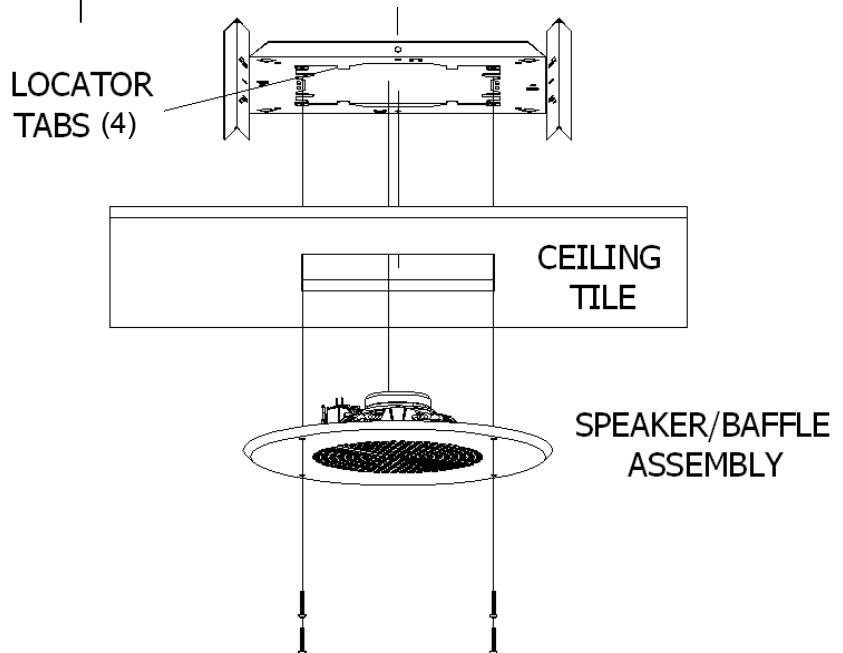
-Insert one spring leg into each rectangular opening of tile bridge. Press speaker baffle to front of ceiling tile.

- Refer to loudspeaker assembly for proper termination, or go to www.QuamSpeakers.com / Resources/ Wiring

- Insulate all unused taps from each other, the enclosure and electrical ground.

NOTE! AHJ/ local codes may require tie-off to structure.
Tie-off to tile bridge frame using hole provided; see arrow on diagram.

NOTE! AHJ/ local codes may require tie-down to grid
Create a hole in the T-bar next to the end of the tile bridge rails; secure with wire through the hole in the end of the



Quam

234 East Marquette Road, Chicago, IL 60637
 Phone: (800) NEED NOW Fax: (888) NEED NOW
 (800) 633 - 3669 (888) 633 - 3669
 E-Mail: neednow@qnc.com www.quamspeakers.com

