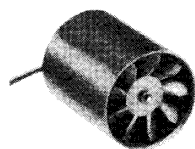
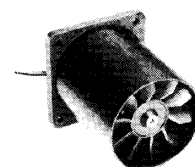
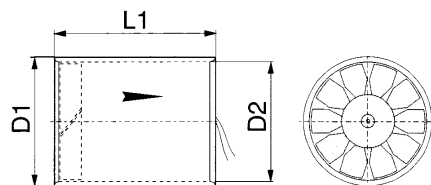




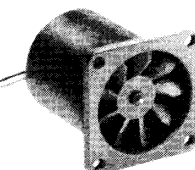
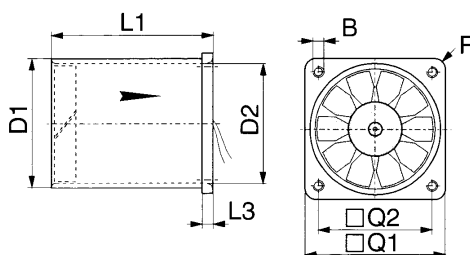
**Axiallüfter
Axial Fans
Ventilateurs Axial**



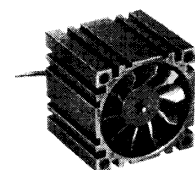
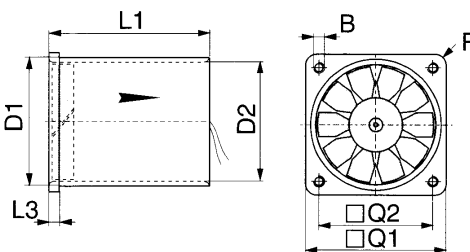
D601T/Q



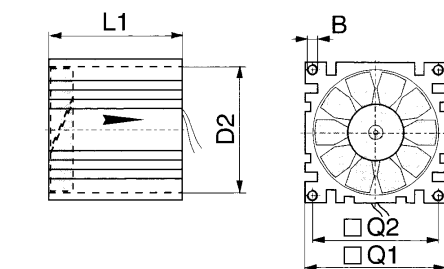
D603T/Q



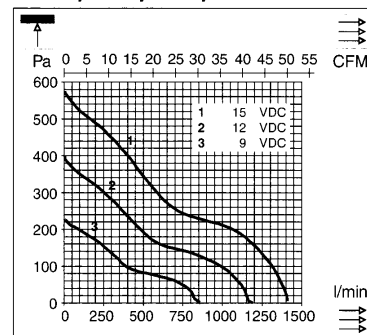
D604T/Q



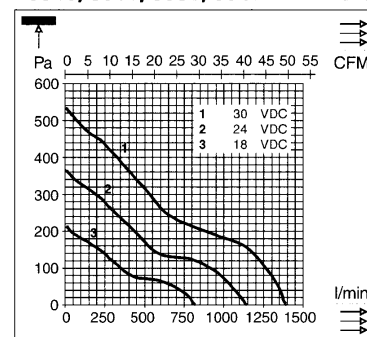
D591T/Q



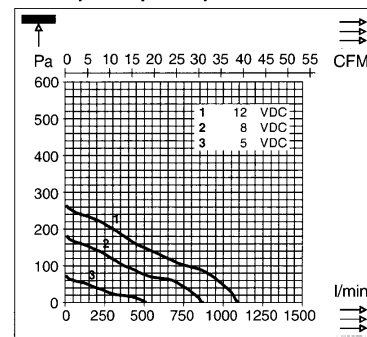
D591T, 601T, 603T, 604T 12 VDC



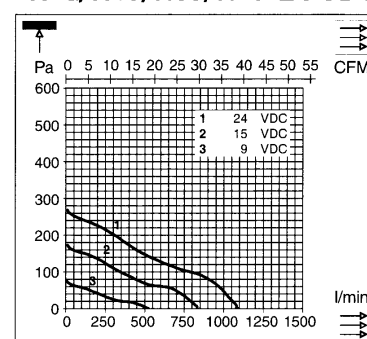
D591T, 601T, 603T, 604T 24 VDC



D591Q, 601Q, 603Q, 604Q 12 VDC



D591Q, 601Q, 603Q, 604Q 24 VDC



D591			D600		
	mm	inch		mm	inch
D1			D1	60	2.362
D2	56.5	2.224	D2	56.5	2.224
L1	60	2.362	L1	60	2.362
L2			L2		
L3			L3	4	0.157
B	M3		B	M3	
Q1	62	2.441	Q1	64	2.520
Q2	50	1.968	Q2	50	1.968
R	0.3	0.012	R	4	0.157

D600



Technische Daten

Technical data

Caractéristiques techniques

Die D600Q-Baureihe ist mit elektronischem Motor, inklusive Micronel Asic ausgerüstet (3 Litzen)

- sehr lange Laufzeit
- Spannungsbereich 5-30 VDC
- Tachosignal
- Strombegrenzung

Option: 10 Litzen Ausgang mit weiteren Funktionen

The serie D600Q is equipped with an electronic motor, including Micronel Asic (3 leads)

- Long life
- voltage range 5-30 VDC
- tacho signal (speed indicator)
- current limitation

Option: 10 leads-version with further functions

La série D600Q est équipée d'un motor électronique, Asic Micronel inclus (3 fils)

- Usage longue vie
- gamme de tension 5-30 VDC
- signal tacho
- limite de courant

Option: version 10 fils avec fonctions supplémentaires

Types -1 -3 -4			D591T/D601T/D603T/D604T		D591Q/D601Q/D603Q/D604Q	
	U _N	V	12	24	12	24
	U	V	9...15	18...30	5...15	9...30
	I _N	mA	557	231	635	315
	I _{max}	mA	668	277	794	394
	I _{block}	A	5.6	4.3	2.4	1.5
	P _N	W	6.68	5.54	7.62	7.56
	n	min ⁻¹	10650	10200	9550	9450
	∇	l/min; CFM	1192/42.1	1143/40.4	1100/38.9	1080/38.7
	p	Pa	395	366	266	268
	LpA	dB(A)	57	56	55	56
	MTTF	hr	10000		++plus 40000	
	T	°C/F	-20...+65 / -5...+150		-20...+65 / -5...+150	
	m	g/oz.	179/6.17		165/5.81	
	L/M	mm/inch	220/8.86		220/8.86	
	PPO	UL-94V-1	-		-	
	Aluminium		o.k.		o.k.	
			-		-	
			o.k.		o.k.	
	CLL		-		-	
			-		o.k.	
			o.k.		o.k.	
			o.k.		o.k.	
			-		i	

Zusätzliche Funktionen bei 10 Litzen Version

- PWM (variable Drehzahl speed)
- PLL (konstante Drehzahl)
- El. Geräuschdämpfung
- Stop-Funktion
- Richtungswechsel
- NOS

Additional Functions for 10 Lead Version

- PWM (variable speed)
- PLL (constant speed)
- Low noise function
- Brake function
- Direction
- NOS

Functions supplémentaires de la version au 10 files

- PWM (vitesse variable)
- PLL (vitesse constant)
- Fonction bruit réduit
- Fonction stop
- Changer de direction
- NOS