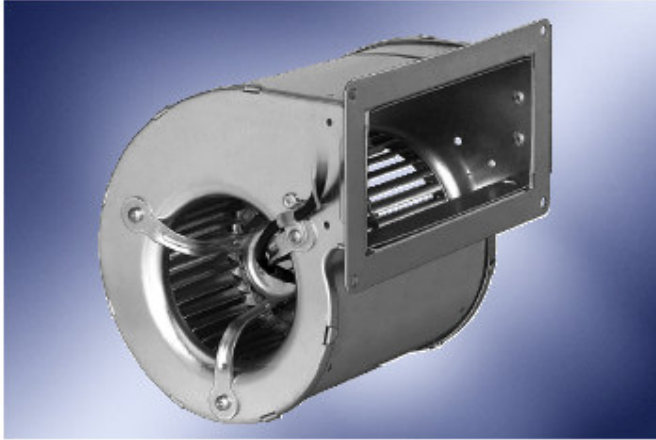


## AC Centrifugal Blowers Dual Inlet, Ø97mm



ebm-papst Mulfingen

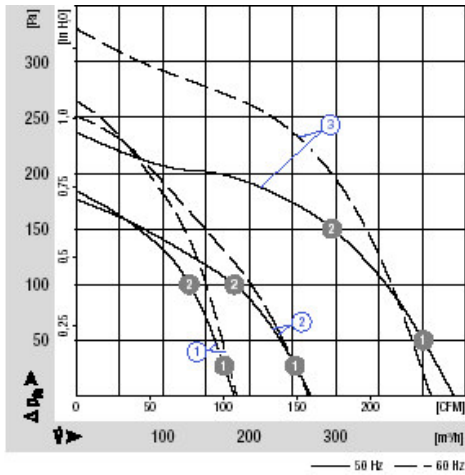
- Dual Inlet fans with an external rotor motor offering the advantage of matched motor and impeller in a compact space saving design.
- Motors: IP44 rated, sealed for life, maintenance free, class B insulation, precision ball bearings and side mounted capacitor and terminal block.
- Impeller: forward curved multi-vane type force fitted for vibration free operation/efficient cooling.
- Body: heavy duty, galvanised steel
- May be mounted in any position

Nominal Data		Curve	Voltage	Frequency	Air Flow	Speed/rpm	Power Input	Current Draw	Noise	Perm. Amb. Temp.	Mass
Part Number	Curve	VAC	HZ	M <sup>3</sup> /h	min <sup>-1</sup>	W	A	DB(A)	°C	kg	
D2E097-BI56-50	3	230	50	435	1950	87	0.39	58	40	1.5	
		230	60	410	1850	100	0.45	57	35		

# AC Centrifugal Blowers

## Dual Inlet, Ø97mm

### Performance Curve



### Dimensions

Part Number	A	B	C	D	E	H	I	K	L	M	N	O	P
D2E097-BI56-50	180	168	100	88	67	79.5	146	162	86	165	68	114	62.5

