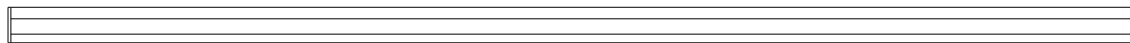
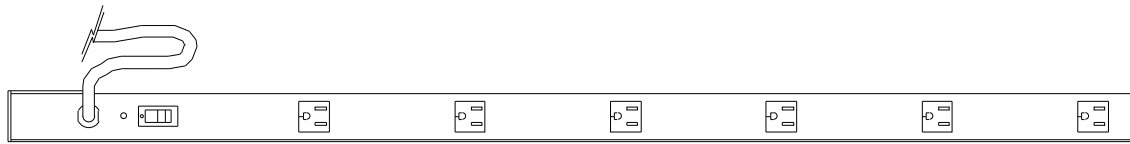


NOTES

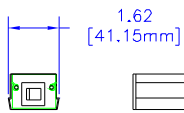
DESIGNED FOR POWER DISTRIBUTION FOR EQUIPMENT RACKS – ALSO HANDY FOR WORK STATIONS.
 RUGGED EXTRUDED ALUMINUM CASE.
 HEAVY-DUTY CORD – 14/3 SJTW WIRE FOR EXTREME TEMPERATURE RANGES.
 INTEGRAL MOLDED PLUG AVAILABLE IN STRAIGHT-BLADE (NEMA 5-15P) OR TWIST-LOCK (NEMA L5-15P) CONFIGURATIONS.
 COMES WITH ON/OFF SWITCH.
 INCLUDES 15A, OR 20A 125VAC CIRCUIT BREAKER TO PREVENT ACCIDENTAL LINE OVERLOAD.
 INCLUDES HARDWARE FOR RACK MOUNTING TO AMHAL STRUTS.
 CSA CERTIFIED, UL LISTED.



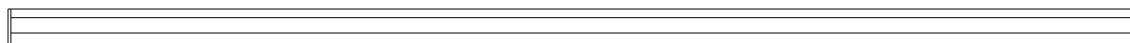
SIDE VIEW



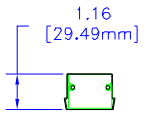
TOP VIEW



L. END VIEW



SIDE VIEW



R. END VIEW



BOTTOM VIEW

*SEE CATALOG FOR THE COMPLETE PART NUMBER BASED ON THE OPTIONS LISTED IN THE NOTE SECTION

UNLESS OTHERWISE SPECIFIED
 DIMENSIONS ARE IN INCHES
 XX +/- .1
 XXX +/- .05
 XXXX +/- .015
 DIMS +/- .005
 ANGLES +/- 5 DEG

NOTE:
 HAMMOND STRIPS PROPRIETARY RIGHTS TO THE DESIGN OR ANY SIMILARITY OF IT INTENDED TO BE USED AS A REFERENCE FOR IDENTIFYING PARTS TO OUR QUALITY MANUFACTURE PRODUCT WITHOUT WRITING PERMISSION FROM HAMMOND MANUFACTURING



HAMMOND
 MANUFACTURING

WEB: WWW.HAMMONDMFG.COM

TITLE		HAMMOND INDUSTRIAL GRADE POWER STRIPS	
DRAWN BY	MJM	DATE	02/09/01
SCALE		PAGE	1 OF 1
PART NUMBER		15853H6***	