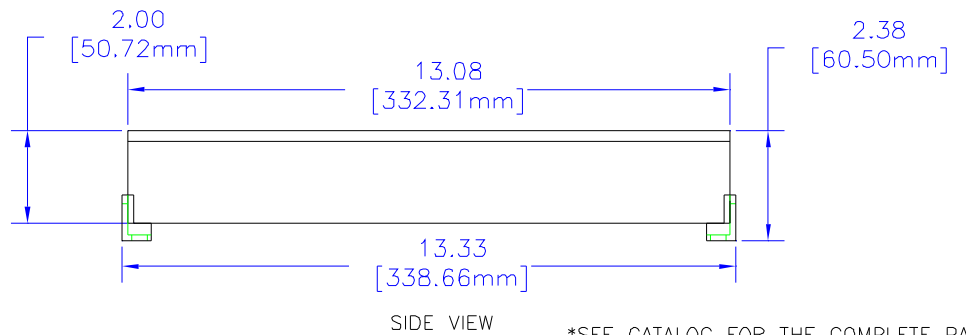
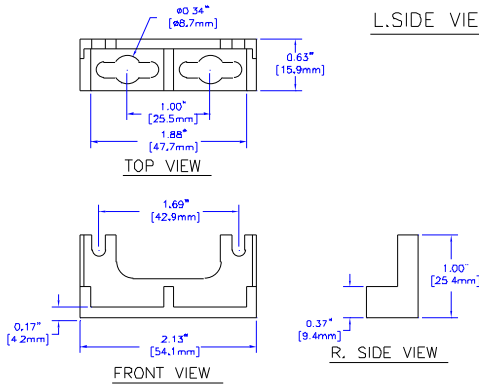
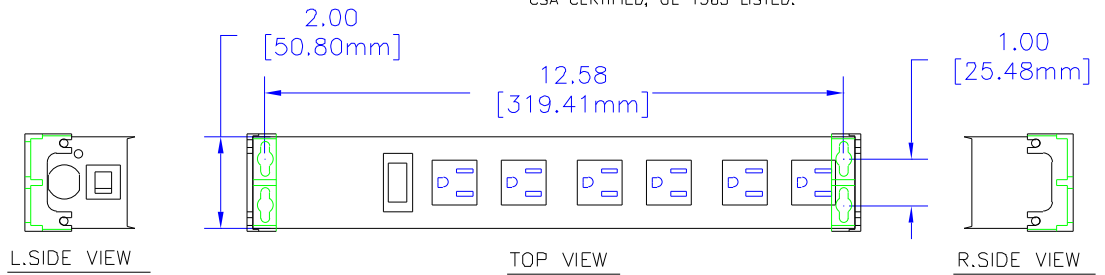


NOTES

BUILT TO MEET THE REQUIREMENTS OF INDUSTRIAL AND COMMERCIAL USE. ALL METAL HOUSING—TOUGH EXTRUDED ALUMINUM CASE WITH BLACK POWDER-COATED STEEL COVER.
 HEAVY-DUTY CORD — 14/3 SJTW WIRE FOR EXTREME TEMPERATURE RANGES.
 INTEGRAL MOLDED PLUG AVAILABLE IN STRAIGHT-BLADE (NEMA 5-15P) OR TWIST-LOCK (NEMA L5-15P) CONFIGURATIONS.
 SEPARATE MOUNTING FEET WITH KEYHOLE SLOTS PROVIDE FOR WORK STATION MOUNTING IF DESIRED.
 COMES WITH LIGHTED RED PILOT LIGHT TO INDICATE POWER ON.
 INCLUDES 15A, 125VAC CIRCUIT BREAKER TO PREVENT ACCIDENTAL LINE OVERLOAD.
 CSA CERTIFIED, UL 1363 LISTED.



*SEE CATALOG FOR THE COMPLETE PART NUMBER BASED ON THE OPTIONS LISTED IN THE NOTE SECTION

UNLESS OTHERWISE SPECIFIED
 DIMENSIONS ARE IN INCHES
 .X +/- .1
 .XX +/- .02
 .XXX +/- .015
 .005 +/- .005
 ANGLES +/- .5 DEG
 SURF FINISH
 UNLESS OTHERWISE SPECIFIED
 FINISH IS AS SHOWN
 INTENDED TO BE USED AS A REFERENCE FOR
 DIMENSIONS EXCEPT THOSE SHOWN
 INFORMATION MAY NOT BE USED TO
 MANUFACTURE, REPAIR, OR MAINTAIN
 PERFORM FROM HAMMOND MANUFACTURING



**HAMMOND
 MANUFACTURING**

WEB: WWW.HAMMONDMFG.COM

TITLE		HAMMOND INDUSTRIAL GRADE POWER STRIPS	
DRAWN BY	MJM	DATE	02/09/01
SCALE		PAGE	1 OF 1
PART NUMBER	1584T6****		