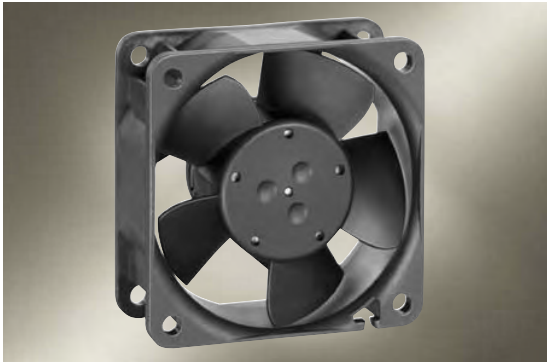


# DC Axial Fans

Series 600 N 60 x 60 x 25 mm



- DC fans with electronically commutated external rotor motor. Fully integrated commutation electronics.
- With electronic protection against reverse polarity, locked rotor and overloading.
- Fan of fibreglass reinforced plastic. PBTP housing, PA impeller.
- Air exhaust over struts. Rotational direction CW looking at rotor.
- Electrical connection via 2 leads AWG 22, TR 64. Stripped and tinned ends.
- Mass 66 g.

Nominal Data	Air Flow		Nominal Voltage	Voltage Range	Noise	Sinter-Sleeve Bearings	Ball Bearings	Power Input	Nominal Speed	Temperature Range	Service Life L <sub>10</sub>		Curve	Specials
	m <sup>3</sup> /h	CFM									V DC	V DC		
612 NGL	21	12.4	12	8...15	16	3.6	□	0.6	2 500	-20...+85	80 000 / 27 500	1		
612 NLE	21	12.4	12	8...15	16	3.6	■	0.4	2 500	-20...+85	80 000 / 27 500	1		
612 NGMLE	25	14.7	12	8...15	19	3.9	□	0.7	3 000	-20...+80	80 000 / 32 500	2		
612 NMLE	25	14.7	12	8...15	19	3.9	■	0.4	3 000	-20...+85	80 000 / 27 500	2	/2	
612 NGME	35	20.6	12	8...15	28	4.6	□	1.2	4 100	-20...+75	80 000 / 35 000	3		
612 NME	35	20.6	12	8...15	28	4.6	■	0.8	4 100	-20...+75	80 000 / 35 000	3	/2	
612 NN	42	24.7	12	8...15	35	5.0	■	1.6	5 100	-20...+70	70 000 / 35 000	4	/2	
612 NH	46	27.1	12	8...15	37	5.3	■	2.0	5 600	-20...+70	70 000 / 35 000	5	/2	
612 NHH-118	56	33.0	12	8...15	41	5.7	■	2.9	6 800	-20...+70	60 000 / 30 000	6	/2	
614 NGL	21	12.4	24	18...28	16	3.6	□	1.0	2 500	-20...+70	80 000 / 40 000	1		
614 NLE	21	12.4	24	18...28	16	3.6	■	0.9	2 500	-20...+70	80 000 / 40 000	1	/2	
614 NGML	25	14.7	24	18...28	19	3.9	□	1.2	3 000	-20...+70	80 000 / 40 000	2	/2	
614 NMLE	25	14.7	24	18...28	19	3.9	■	1.0	3 000	-20...+70	80 000 / 40 000	2		
614 NGM	35	20.6	24	18...28	28	4.6	□	1.7	4 100	-20...+70	80 000 / 40 000	3	/12	
614 NME	35	20.6	24	18...28	28	4.6	■	1.4	4 100	-20...+70	80 000 / 40 000	3	/2;/39	
614 NN	42	24.7	24	18...28	35	5.0	■	1.8	5 100	-20...+70	70 000 / 35 000	4		
614 NH	46	27.1	24	18...26	37	5.3	■	2.1	5 600	-20...+70	70 000 / 35 000	5	/2	
614 NHH	56	33.0	24	18...26	41	5.7	■	3.0	6 850	-20...+70	60 000 / 30 000	6		
614 NHH-119	56	33.0	24	18...28	41	5.7	■	3.0	6 850	-20...+70	60 000 / 30 000	6	/2	
618 NM	35	20.6	48	36...56	28	4.6	■	1.4	4 100	-20...+70	80 000 / 40 000	3		
618 NN	42	24.7	48	36...56	35	5.0	■	2.1	5 100	-20...+65	70 000 / 40 000	4	/2;/12;/39	

