

# 80x80x20 mm

# SUNON

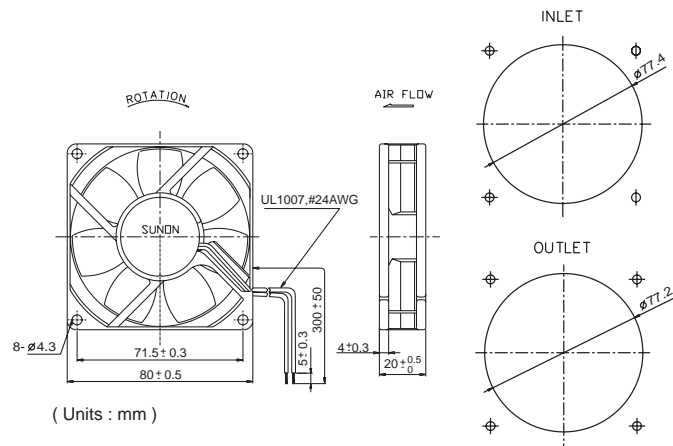
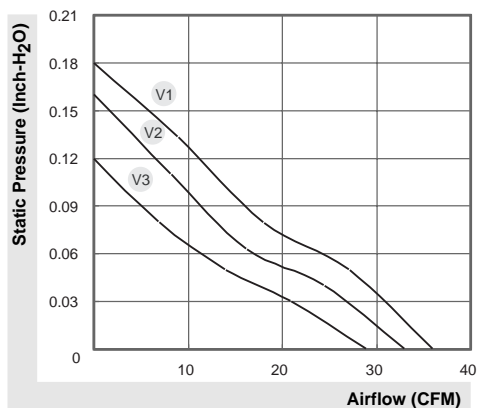
## MagLev Motor Fan

## 29~36 CFM



| Model       | P/N        | Bearing<br>● VAPO<br>⊙ 2BALL | Rating Voltage (VDC) | Power Current (AMP) | Power Consumption (WATTS) | Speed (RPM) | Air Flow (CFM) | Static Pressure (Inch-H <sub>2</sub> O) | Noise (dBA) | Weight (g) |
|-------------|------------|------------------------------|----------------------|---------------------|---------------------------|-------------|----------------|---|-------------|------------|
| KDE1208PKV1 | 13.MS.A.GN | ●                            | 12                   | 0.13                | 1.6                       | 3200        | 36             | 0.18                                    | 38          | 72         |
| KDE1208PKV2 | 13.MS.A.GN | ●                            | 12                   | 0.10                | 1.2                       | 2900        | 33             | 0.16                                    | 35          | 72         |
| KDE1208PKV3 | 13.MS.A.GN | ●                            | 12                   | 0.07                | 0.8                       | 2500        | 29             | 0.12                                    | 30          | 72         |
| KDE2408PKV1 | 13.MS.A.GN | ●                            | 24                   | 0.07                | 1.7                       | 3200        | 36             | 0.18                                    | 38          | 72         |
| KDE2408PKV2 | 13.MS.A.GN | ●                            | 24                   | 0.05                | 1.2                       | 2900        | 33             | 0.16                                    | 35          | 72         |
| KDE2408PKV3 | 13.MS.A.GN | ●                            | 24                   | 0.04                | 1.0                       | 2500        | 29             | 0.12                                    | 30          | 72         |

\*High air flow products please see page 46.



\*All model could be customized on voltage or any other requirements to fit your need.

\*Specifications subject to change without notice. Please Visit SUNON web site at <http://www.sunon.com> for update information.

# Fan 3rd Wire Signal

Fan with switching driving circuit designed for rpm measurement:

These fan motors have three lead wires:

+:Red,

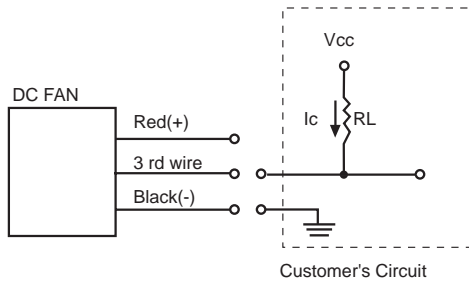
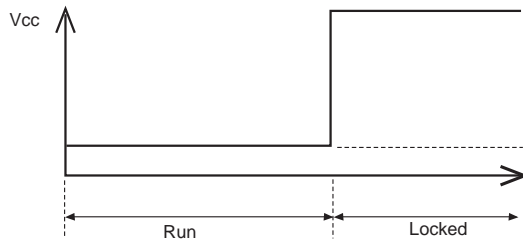
-:Black,

output signal for 3rd wire:

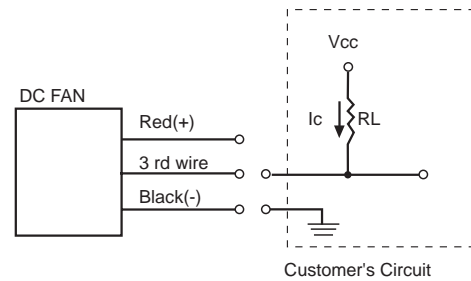
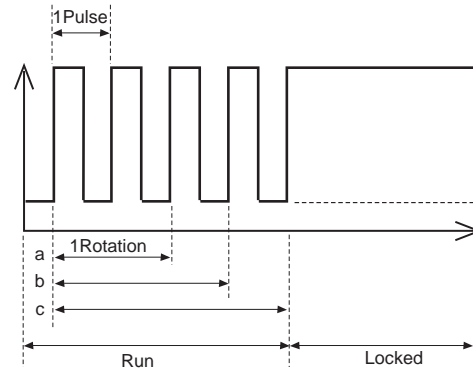
F Type : Yellow

R Type : White

## ● R Type (Rotation Detector)



## ● F Type (Frequency Generator)



The relationship between rotation & output pulses signal from 3rd wire are as follows:

(a) 1 Rotation=2 Pulses(4 poles' motor)

(b) 1 Rotation=3 Pulses(6 poles' motor)

(c) 1 Rotation=4 Pulses(8 poles' motor)

Notice:

For 8 poles' motor: normally,

1Rotation=4 pulses, if frequency divided

circuit is implemented in this motor then

1Rotation=2 pulses.

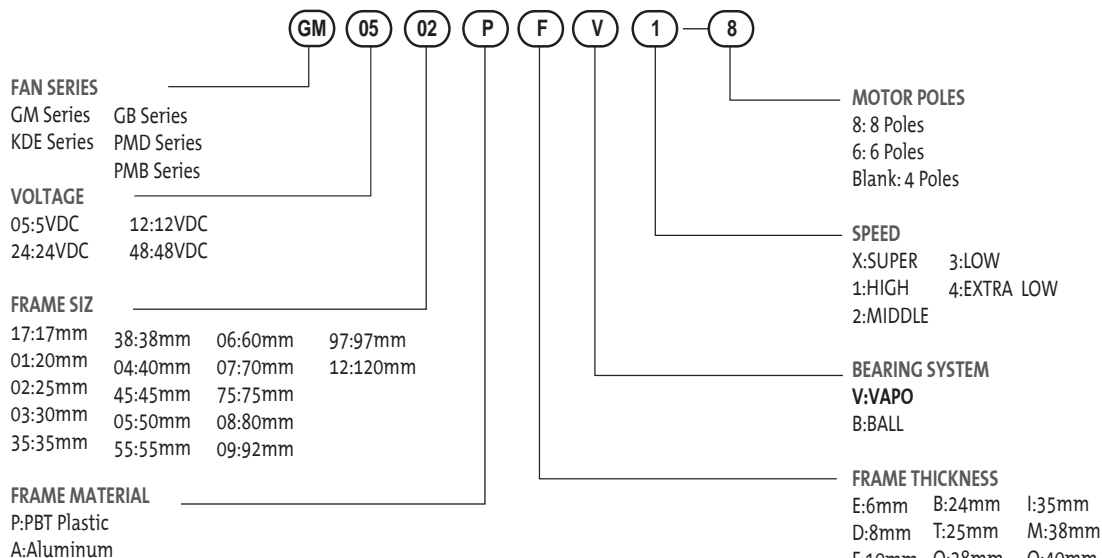
## Safety



## Certification



# DC Fan and Blower Model Numbering System



## P/N

Example: KDE1208PTV1 P/N:13.MS.A.GN

- 11/13 Motor model
- MS MagLev Design
- (2) Two ball bearing
- G Big hub
- (9) 9 Blades
- N Smaller hub
- A Auto restart
- F 3rd wire with frequency generation waveform
- R 3rd wire with rotation detector waveform
- U Upgrade
- GN RoHS compliance

## Sunon Connector recommendation

| Connector pitch | Manufacturer | Housing       | Terminal   |
|-----------------|--------------|---------------|--|
| 1.25mm          | HIROSE       | DF13-2S-1.25C | DF13-2630SCF                                     |
|                 | MOLEX        | 51021-0300    | 50058-8200                                       |
| 1.5mm           | JST          | ZHR-2         | SZH-002T-P0.5 or SZH-003T-P0.5                   |
| 2.0mm           | JST          | PHR-2         | SPH-002T-P0.5S                                   |
| 2.54mm          | ECI          | 2510-02       | 2511-P   |
|                 | Molex        | 50-57-9405    | 16-02-0069(70058-0004) or 16-02-0082(70058-0006) |
|                 | Molex        | 2695-02RP     | 2759T(39-00-0372)                                |
|                 | Molex        | 2695-03RP     | 2759T(39-00-0372)                                |
|                 | Molex        | 6471-021      | 4809-C-P914                                      |
|                 | Molex        | 6471-031      | 4809-C-P914                                      |
| 2.50mm          | JAM          | SC25-02HG     | 725462-2MA                                       |
|                 | JST          | SMR-02V-B     | SYM-001T-P0.6                                    |
|                 | JST          | XHP-2         | SXH-001T-0.6                                     |
|                 | JST          | EHR-2(H28J-2) | SEH-001T-P0.6                                    |
|                 | JST          | SMP-02V-BC    | SHF-001T-0.8BS                                   |
|                 | JWT          | A2502H02-2P   | A2502TOP-2                                       |
|                 | JWT          | A2502H02-3P   | A2502TOP-2                                       |
|                 | Molex        | 5051-02       | 2759T(39-00-0372)                                |
|                 | Molex        | 5264-02       | 5263PBT(08-70-1039)                              |