

# 2004KL (50<sup>□</sup> X 10<sup>L</sup>)



EMINEBEA.COM

## General Specifications

### Motor Protection:

Auto Restart/Polarity Protection

**Insulation Resistance:** 10M Ω or over with a DC500V Megger

**Dielectric Withstand Voltage:** AC 700V 1s

### Allowable Ambient Temperature Range:

-10°C ~ +70°C (Operating)

-40°C ~ +70°C (Storage)

(non-condensing environment)

## Expected Life

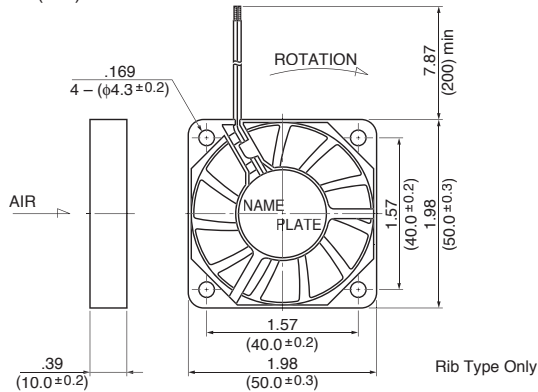
### Failure Rate: 10%

25°C 60,000 Hours (B00)

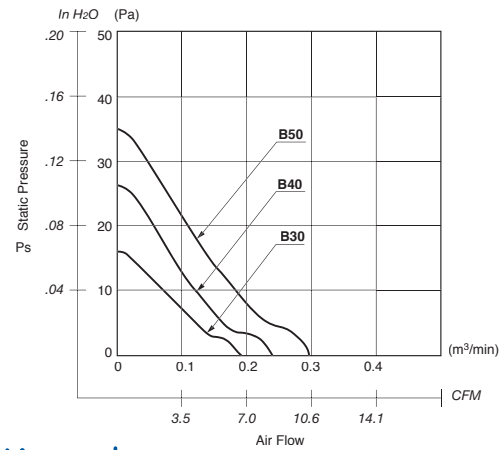
25°C 50,000 Hours (M00)

## Outline

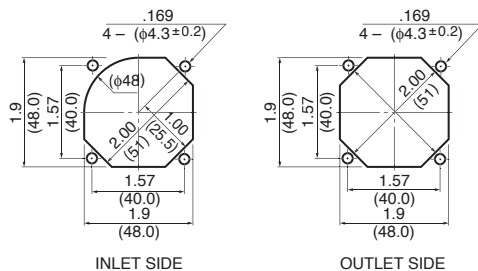
Units:  $\frac{\text{inch}}{\text{(mm)}}$



## Characteristic Curves



## Panel Cut-outs



## Material

Casing : Plastic (Black) 94V-0

Impeller : Plastic (Black) 94V-0

Bearing : Ball Bearing

Lead Wire : UL1061, AWG26, +Red, -Black

## Specifications

MODEL	Product No.	Rated Voltage	Operating Voltage	Current	Input Power	Speed	Max. Air Flow		Max. Static Pressure		Noise	Mass
		(V)	(V)	(A) <sup>*1</sup>	(W) <sup>*1</sup>	(min <sup>-1</sup> ) <sup>*1</sup>	CFM <sup>*1</sup>	(m <sup>3</sup> /min) <sup>*1</sup>	in H <sub>2</sub> O	(Pa) <sup>*1</sup>	(dB) <sup>*1</sup>	(g)
2004KL-01W-B30-	X00	5	4.5 ~ 6.0	0.10	0.50	3500	6.4	0.18	.06	16.0	23.0	20
2004KL-01W-B40-	X00	5	4.5 ~ 6.0	0.16	0.80	4500	8.1	0.23	.10	26.0	28.5	20
2004KL-01W-B50-	X00	5	4.5 ~ 6.0	0.30	1.50	5500	10.2	0.29	.14	35.0	34.0	20
2004KL-04W-B30-	X00	12	10.2 ~ 13.8	0.04	0.48	3500	6.4	0.18	.06	16.0	23.0	20
2004KL-04W-B40-	X00	12	10.2 ~ 13.8	0.07	0.84	4500	8.1	0.23	.10	26.0	28.5	20
2004KL-04W-B50-	X00	12	10.2 ~ 13.8	0.10	1.20	5500	10.2	0.29	.14	35.0	34.0	20

Rotation: Clockwise

Airflow Outlet: Air Out Over Struts

\*1: Average Values in Free Air