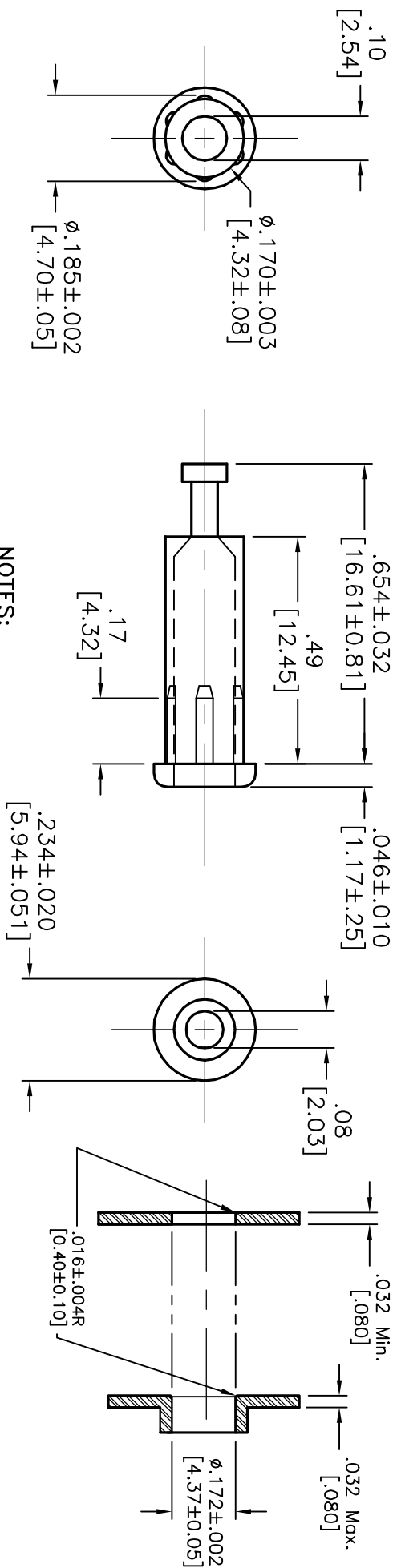


ALL RIGHTS RESERVED. NO PORTION OF THIS PUBLICATION, WHETHER IN WHOLE OR IN PART CAN BE REPRODUCED WITHOUT THE EXPRESS WRITTEN CONSENT OF SPC TECHNOLOGY.

REVISIONS		DOC. NO. SPC-F005	Effective: 12/21/98	DCP No: 680				
DCP #	REV	DESCRIPTION	DRAWN	DATE	CHECKD	DATE	APPRVD	DATE
	C	Revised					JL	
1210	D	Renamed and Updated	JMM	12/18/01	DJC	12/28/01	DJC	12/28/01



**NOTES:**

- MATERIAL: CONTACT: BRASS BODY PER QQ-B-626D WITH WRAP AROUND BERYLLIUM COPPER SPRING PER QQ-C-533 BODY: NYLON 66 PER ASTM D4066
- FINISH: SILVER
- PANEL THICKNESS: UP TO .375" [9.05 MM].
- FLAMMABILITY: UL94V-2 SELF-EXTINGUISHING
- CONTINUOUS USE TEMPERATURE: -40°F (-40°C) TO 185°F (85°C)
- CURRENT RATING: 5 AMPS
- BREAKDOWN VOLTAGE: 3500 VRMS MINIMUM
- CONTACT RESISTANCE: .005 OHMS MAX.
- CONTACT-TO-PANEL CAP.: 1 pF NOMINAL
- FOR STANDARD TIP PLUG .080" [2 MM].
- MACHINED CONTACT WITH TURRET TERMINAL.
- INSTALLS BY PRESSING INTO MOUNTING HOLE, NO MOUNTING HARDWARE REQUIRED.
- CLOSED ENTRY BLOCKS ACCES OF PROBES GREATER THAN .085" [2.16 MM].

**PANEL AND MOUNTING HOLE LAYOUT**

PART NUMBER	COLOR
868-BK	BLACK
868-GR	GREEN
868-R	RED
868-Y	YELLOW

**DISCLAIMER**  
ALL STATEMENTS AND TECHNICAL INFORMATION CONTAINED HEREIN ARE BASED UPON INFORMATION AND/OR TESTS WE BELIEVE TO BE ACCURATE AND RELIABLE SINCE CONDITIONS OF USE ARE BEYOND OUR CONTROL. THE USER OF THE PRODUCT FOR THE INTENDED USE AND ASSUME ALL RISK AND LIABILITY WHATSOEVER IN CONNECTION THEREWITH.



**SPC TECHNOLOGY**

Tolerances: Unless Otherwise Specified:

- .X = ±.015
- .XX = ±.010
- .XXX = ±.005

SPC-F005.DWG

DRAWING TITLE:		DRAWING NO.		ELECTRONIC FILE	
DRAWN BY:	DATE:	SIZE	DWG. NO.	TA-465	TA-465.dwg
JP	2/16/93	A			
CHECKED BY:	DATE:	SCALE:	NTS	U.O.M.: INCHES [mm]	
JC	2/18/93				
APPROVED BY:	DATE:				
JL	2/22/93				

Tip Jack, Press-Fit, Rib-Lock

REV D

SHEET: 1 OF 1