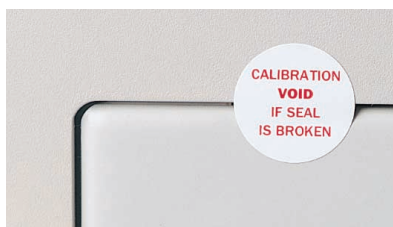


Tamperseal™



- ▶ Designed for sealing access points, protecting adjustments and sealing enclosures
- ▶ Available in two shapes with three different legends
- ▶ Custom sizes, colors and shapes available

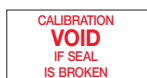
Brady tamperseals come in 20-page pocket size books. Protect your warranty exposure by sealing access points with tamperseals.

Vinyl Film (B-351)

Part Number	Labels Per Book	Label Size Inch (mm)	Legend
TL-PK-1	300	0.800 (20.32) Diameter	WARRANTY VOID IF SEAL IS BROKEN
TL-PK-2	300	0.800 (20.32) Diameter	CALIBRATION VOID IF SEAL IS BROKEN
TL-PK-3	300	0.800 (20.32) Diameter	VOID IF SEAL IS BROKEN
TL-PK-11	480	0.750 x 0.375 (19.05 x 9.53)	WARRANTY VOID IF SEAL IS BROKEN
TL-PK-12	480	0.750 x 0.375 (19.05 x 9.53)	CALIBRATION VOID IF SEAL IS BROKEN
TL-PK-13	480	0.750 x 0.375 (19.05 x 9.53)	VOID IF SEAL IS BROKEN

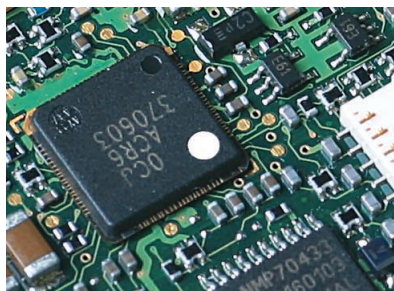


TL-PK-1, 2 and 3 are 0.800" (20.32 mm) diameter circles

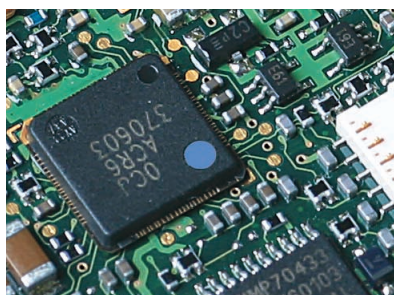


TL-PK-11, 12 and 13 are 0.750" x 0.375" (19.05 mm x 9.53 mm) rectangles

Water Indicating Labels



Before



After

- ▶ Provides clear evidence of water contact – turns from white to blue or red
- ▶ Color change becomes permanent, even after prolonged submersion in water
- ▶ Withstands heat and humidity aging without false indication
- ▶ Custom sizes and shapes available

Water Indicating Polyester / Paper (B-350, B-354)

Part Number	Pieces Per Roll	Label Size Inch (mm)	Web Width Inch (mm)	Color Change
THT-6-354-10*	10,000	1.500 x 0.750 (38.10 x 19.05)	3.350 (85.09)	Blue
THT-14-354-10*	10,000	0.600 x 0.200 (16.50 x 5.10)	2.950 (74.93)	Blue
THT-17-354-3*	3,000	2.000 x 1.000 (50.80 x 25.40)	2.125 (53.98)	Blue
THT-42-354-10*	10,000	1.000 x 0.187 (25.40 x 4.80)	1.200 (30.48)	Blue
THT-43-354-10*	10,000	1.250 x 0.250 (31.80 x 6.40)	1.450 (36.83)	Blue
THT-46-354-10*	10,000	0.750 x 0.250 (19.10 x 6.40)	0.950 (24.13)	Blue
THT-59-354-10*	10,000	1.000 x 0.500 (25.40 x 12.70)	1.200 (30.48)	Blue
THT-70-350-5*	5,000	0.250 x 0.250 (6.35 x 6.35)	2.370 (60.20)	Red
THT-70-350-20*	20,000	0.250 x 0.250 (6.35 x 6.35)	2.370 (60.20)	Red
THT-70-354-20*	20,000	0.250 x 0.250 (6.40 x 6.40)	2.370 (60.20)	Blue
THT-96-354-10*	10,000	0.500 x 0.275 (12.70 x 7.00)	2.500 (63.50)	Blue
THT-104-354-20*	20,000	0.315 x 0.177 (8.00 x 4.50)	2.390 (60.71)	Blue
WIL-1-350-5	5,000	0.160 Dia. (4.10)	2.000 (50.80)	Red
WIL-1-350-20	20,000	0.160 Dia. (4.10)	2.000 (50.80)	Red
WIL-1-354-20	20,000	0.160 Dia. (4.10)	2.000 (50.80)	Blue

* The THT parts are provided in a format and size acceptable for thermal transfer printing. See Thermal Transfer Labels section for more details.