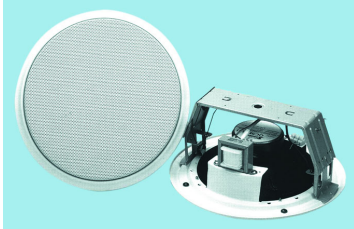


# Ceiling Speaker



## Features:

- Hi-fi quality ceiling speaker designed to offer significantly improved performance over standard units.
- The unit employs a twin cone 8 inches driver capable of extended frequency response and is ideal for applications where high quality music is required as well as paging.
- Simple installation without any additional hardware.
- Excellent bass response.
- Simple fit mechanism.
- Steel construction.
- Power coat finish in white.

## Technical Information:

Power rating	: 10W.
Input	: 100V.
Tappings	: 10, 5, 2.5W.
Frequency response	: 70Hz to 20KHz.
SPL (1W/1M)	: 92dB.
Cut-out	: 230mm.
Dimensions (diameter x D)	: 270 x 127mm.

## Part Number Table

Description	Part Number
Speaker, Ceiling, 8 Inches	LS00508

**Disclaimer** This data sheet and its contents (the "Information") belong to the Premier Farnell Group (the "Group") or are licensed to it. No licence is granted for the use of it other than for information purposes in connection with the products to which it relates. No licence of any intellectual property rights is granted. The Information is subject to change without notice and replaces all data sheets previously supplied. The Information supplied is believed to be accurate but the Group assumes no responsibility for its accuracy or completeness, any error in or omission from it or for any use made of it. Users of this data sheet should check for themselves the Information and the suitability of the products for their purpose and not make any assumptions based on information included or omitted. Liability for loss or damage resulting from any reliance on the Information or use of it (including liability resulting from negligence or where the Group was aware of the possibility of such loss or damage arising) is excluded. This will not operate to limit or restrict the Group's liability for death or personal injury resulting from its negligence. SPC pro-SIGNAL is the registered trademark of the Group. © Premier Farnell plc 2009.

<http://www.farnell.com>  
<http://www.newark.com>  
<http://www.cpc.co.uk>

