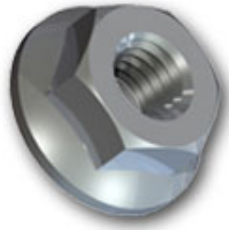
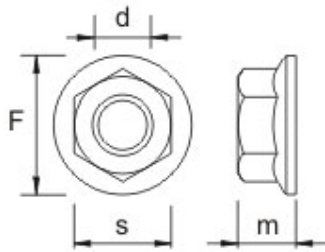


Metric flange nuts - Serrated



Similar to DIN 6923

Materials and Finishes

Steel/Zinc & clear
Stainless steel/Self colour
Brass/Self colour

Dimensions

d	M5	M6	M8	M10	M12
m max	5	6	8	10	12
s max	8	10	13	15	18
F max	11.8	14.2	18	22	26

Preferred Sizes

All sizes are non-preferred. Please enquire for availability