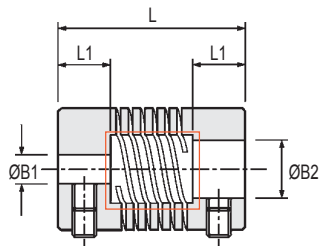
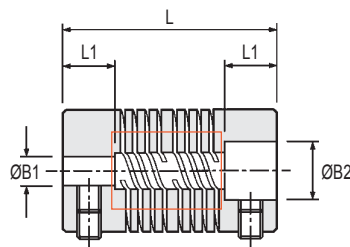


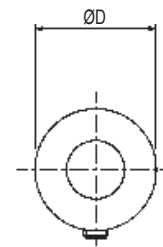
Set screw hubs



Ref. 724
3-Beam Relieved

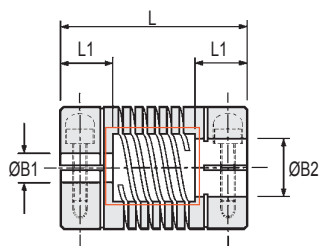


Ref. 706 : 6-Beam Non-Relieved
Ref. 726 : 6-Beam Relieved

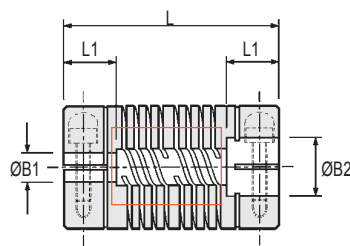


Typical

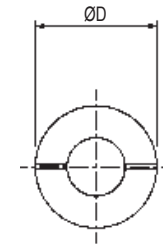
Clamp hubs



Ref. 725
3-Beam Relieved



Ref. 707 : 6-Beam Non-Relieved
Ref. 727 : 6-Beam Relieved



Typical

3-BEAM COUPLERS: DIMENSIONS & ORDER CODES

Coupler Type & Size	Set Screw Style	Clamp Style	ØD	L	L1	Bore Diameters			Set Screw	Cap Screw	Angular Offset Deg.	Parallel Offset mm	Peak Torque Nm
						Min B1	Min B2	Max B1 & B2					
Relieved	06	724.06	6.4	12.7	3.2	1.0	2.0	3.0	M2	-	3	0.07	0.40
	09	724.09	9.5	14.2	4.5	2.0	3.0	3.18	M2.5	M1.6		0.1	
	13	724.13	12.7	19.1	6.0	3.0	4.0	5.0	M3	M2	5	0.127	0.90
		-	725.13	6.35									
	16	724.16	15.9	20.3	6.5	4.0	4.76	8.0	M4	M2.5	5	0.127	1.50
		-	725.16	6.35									
	19	724.19	19.1	22.9	9.0	5.0	6.0	10.0	M5	M3	5	0.127	2.50
		-	725.19	6.35									
	25	724.25	25.4	31.8	12.0	6.0	8.0	14.0	M6	M4	5	0.127	4.0
		-	725.25	6.35									
32	724.32	31.8	44.5	12.0	6.0	8.0	14.0	M6	M4	5	0.127	6.0	
	-	725.32	6.35										

Materials

Couplers:
Aluminium L168 or better

Fasteners:
Alloy steel, black oiled

Temperature Range
-40°C to +120°C

All 3-beam couplers are in relieved form as standard. See above drawings.

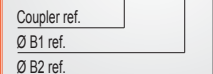
BORE SIZES

Coupler Size	ØB1, ØB2 +0.03/-0mm														
	1	2	3	3.175	4	4.763	5	6	6.350	8	9.525	10	12	12.700	14
06	○	●	●												
09		○	●	●											
13			○	○	●	●	●								
16			○	○	●	●	●	●							
19				○	●	●	●	●	●						
25						○	●	●	●	●	●	●			
32								○	○	●	●	●	●	●	●
Bore ref.	08	11	14	16	18	19	20	22	26	28	31	32	35	36	38

HOW TO ORDER

Combine the COUPLER REF in Dimensions & Order Codes Table with BORE REFS in Bore Sizes Table. Please identify both bores e.g.

724.16.1924



○ B1 only ● B1 & B2

6-BEAM COUPLERS: DIMENSIONS & ORDER CODES

Coupler Type & Size	Set Screw Style	Clamp Style	ØD	L	L1	Bore Diameters			Set Screw	Cap Screw	Angular Offset Deg.	Parallel Offset mm	Peak Torque Nm	
						Min B1	Min B2	Max B1 & B2						
Non-Relieved	706.09	-	9.5	19.6	5.3	2.0	4.0	4.76	M2.5	M1.6	3	0.12	1.0	
	-	707.09												
	13	706.13	-	12.7	22.9	6.5	3.0	5.0	6.35	M3	M2	5	0.17	2.0
		-	707.13											
	16	706.16	-	15.9	25.4	6.5	3.0	6.0	8.0	M4	M2.5	5	0.2	3.4
		-	707.16											
	19	706.19	-	19.1	26.5	6.5	4.76	6.35	10.0	M4	M2.5	5	0.25	5.3
		-	707.19											
	25	706.25	-	25.4	38.1	11.0	5.0	8.0	12.7	M5	M3	5	0.38	10.0
		-	707.25											
	32	706.32	-	31.8	57.2	16.0	8.0	10.0	19.0	M6	M4	7	0.5	15.0
		-	707.32											
	38	706.38	-	38.1	66.7	18.0	8.0	12.0	22.0	M6	M5	7	0.6	22.0
		-	707.38											
	44	706.44	-	44.5	76.2	20.0	9.0	14.0	25.0	M6	M5	7	0.8	30.0
		-	707.44											
51	706.51	-	50.8	95.3	25.0	10.0	16.0	28.0	M8	M6	7	0.9	40.0	
	-	707.51												
57	706.57	-	57.2	130.0	32.0	10.0	20.0	32.0	M8	M6	7	0.95	55.0	
	-	707.57												
64	706.64	-	63.5	150.0	38.0	12.0	25.0	38.0	M8	M8	7	1.0	75.0	
	-	707.64												
Relieved	726.09	-	9.5	19.6	5.3	2.0	3.0	4.76	M2.5	M1.6	3	0.12	0.6	
	-	727.09												
	13	726.13	-	12.7	22.9	6.5	3.0	4.0	6.35	M3	M2	5	0.17	1.3
		-	727.13											
	16	726.16	-	15.9	25.4	6.5	3.0	4.0	8.0	M4	M2.5	5	0.2	2.0
		-	727.16											
	19	726.19	-	19.1	26.5	6.5	4.76	5.0	10.0	M4	M2.5	5	0.25	3.0
		-	727.19											
	25	726.25	-	25.4	38.1	11.0	5.0	6.0	12.7	M5	M3	5	0.38	5.0
		-	727.25											
	32	726.32	-	31.8	57.2	16.0	8.0	9.53	19.0	M6	M4	7	0.5	7.0
		-	727.32											
	38	726.38	-	38.1	66.7	18.0	8.0	12.0	22.0	M6	M5	7	0.6	11.0
		-	727.38											
	44	726.44	-	44.5	76.2	20.0	9.0	14.0	25.0	M6	M5	7	0.8	15.0
		-	727.44											
51	726.51	-	50.8	95.3	25.0	10.0	16.0	28.0	M8	M6	7	0.9	20.0	
	-	727.51												
57	726.57	-	57.2	130.0	32.0	10.0	20.0	32.0	M8	M6	7	0.95	28.0	
	-	727.57												
64	726.64	-	63.5	150.0	38.0	12.0	25.0	38.0	M8	M8	7	1.0	38.0	
	-	727.64												

Materials

Couplers: Aluminium L168 or better

Fasteners: Alloy steel, black oiled

Temperature Range

-40°C to +120°C

- Length of supported bore.
- Max. compensation values are mutually exclusive.
- Peak torque.** Select a size where Peak Torque exceeds the application torque x service factor.
- 6-beam couplers only.** For applications where drive and driven shafts have minimal end-clearance, *relieved* version must be specified.

SERVICE FACTORS

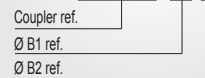
Nature of load	Factor
Uni-directional - steady load	1
Uni-directional - stop/start	1.5
Reversing load	2

If either shaft extends beneath the beams, the area shown in red must be **relieved** to provide clearance under the flexure.

HOW TO ORDER

Combine the COUPLER REF in Dimensions & Order Codes Table with BORE REFS in Bore Sizes Table. Please identify both bores e.g.

706.19.1924



BORE SIZES

NON-RELIEVED

RELIEVED

Coupler Size	ØB1, ØB2 +0.03/-0mm															
	2	3	3.175	4	4.763	5	6	6.350	8	9.525	10	12	12.700	14	15.875	16
09	○	○	○	●	●											
13		○	○	○	○	●	●	●								
16		○	○	○	○	○	●	●	●							
19					○	○	○	○	○	●	●	●				
25						○	○	○	○	○	○	○	○	○	○	○
32										○	○	○	○	○	○	○

Coupler Size	ØB1, ØB2 +0.03/-0mm															
	2	3	3.175	4	4.763	5	6	6.350	8	9.525	10	12	12.700	14	15.875	16
09	○	○	○	○	○	○	○	○	○	○	○	○	○	○	○	○
13		○	○	○	○	○	○	○	○	○	○	○	○	○	○	○
16		○	○	○	○	○	○	○	○	○	○	○	○	○	○	○
19					○	○	○	○	○	○	○	○	○	○	○	○
25						○	○	○	○	○	○	○	○	○	○	○
32										○	○	○	○	○	○	○

Sizes 38 - 64 Manufactured to order only. Please enquire.

Sizes 38 - 64 Manufactured to order only. Please enquire.

Bore ref.	11	14	16	18	19	20	22	24	28	31	32	35	36	38	41	42
-----------	----	----	----	----	----	----	----	----	----	----	----	----	----	----	----	----

Bore ref.	11	14	16	18	19	20	22	24	28	31	32	35	36	38	41	42
-----------	----	----	----	----	----	----	----	----	----	----	----	----	----	----	----	----

○ B1 only ● B1 & B2