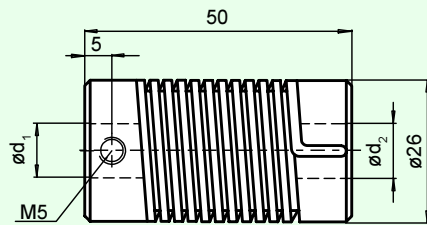


Couplings 9401

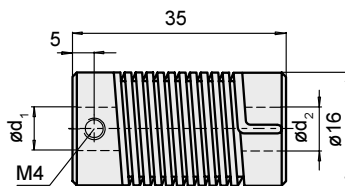


d ₁	6	8	8	10	12
d ₂	6	8	10	10	12

Technical Data

Max. rpm	3000 min ⁻¹
Nominal torque	1.5 Nm
Max. radial mismatch	1.5 mm
Max. angle error	5.0 °
Max. axial mismatch	± 1 mm
Moment of inertia	11.77 kgm ² · 10 ⁻⁴
Binding posts	M5 (DIN 916)
Max. starting torque	120 Ncm
Material	nickel-faced spring steel, zinc diecasting
Weight	≈ 120 g

9402

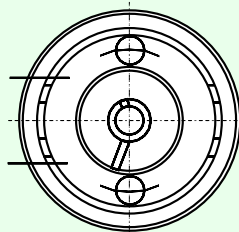
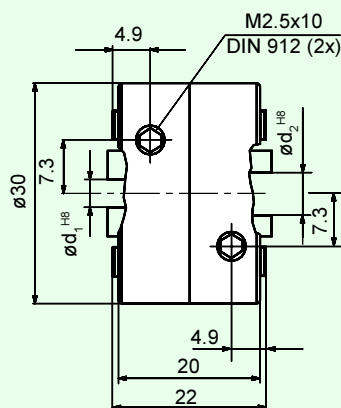


d ₁	6	7	8
d ₂	6	7	8

Technical Data

Max. rpm	3000 min ⁻¹
Nominal torque	0.5 Nm
Max. radial mismatch	1 mm
Max. angle error	5.0 Grad
Max. axial mismatch	± 1 mm
Moment of inertia	1.22 kgm ² · 10 ⁻⁴
Binding posts	M4
Material	nickel-faced spring steel, zinc diecasting
Weight	≈ 28 g

Spring disc coupling 9403



d ₁	6	10
d ₂	6	10

Technical Data

Max. rpm	12000 min ⁻¹
Nominal torque	0.4 Nm
Max. radial mismatch	± 0.4 mm
Max. angle error	± 2.5 °
Max. axial mismatch	± 0.4 mm
Moment of inertia	25 kgm ² · 10 ⁻⁴
Binding posts	M4 (DIN 916)
Max. starting torque	80 Ncm
Material:	
Flange	zinc diecasting
Housing	polyamide 6.6
Weight	≈ 23 g

Date of issue 30.01.1998