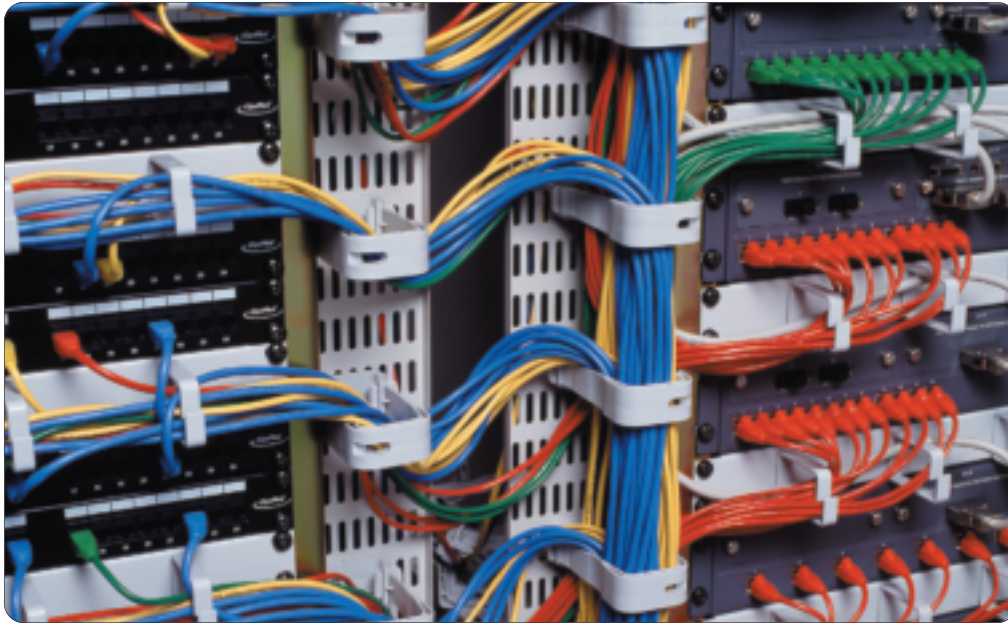


Vertical & Horizontal Cable Management



Vertical Cable Management:

The Access cabinet's unique design provides a wide range of vertical cable management options.

- Steel cable tray in 3" (75mm) and 6" (150mm) widths and 27U to 47U heights.
- Wire basket in 6" (150mm) and 12" (300mm) widths to make cable strapping very easy. Each basket has vertical wires on a 2" (50mm) interval and horizontal wires at 4" (100mm) intervals, allowing a variety of "tying" places.
- Twist lock cable management spool allow cables to be routed in all three axes, i.e., vertical, horizontal and front to rear.
- Small and large cable hoops are available in plastic and metal.

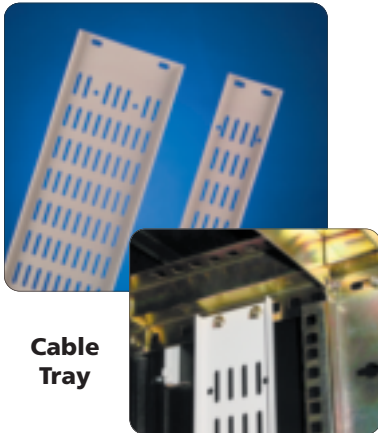
Horizontal Cable Management:

The Access cabinet's two (2) post cornerless design and horizontal cable management accessories offer unrestricted horizontal cabling support between cabinets.

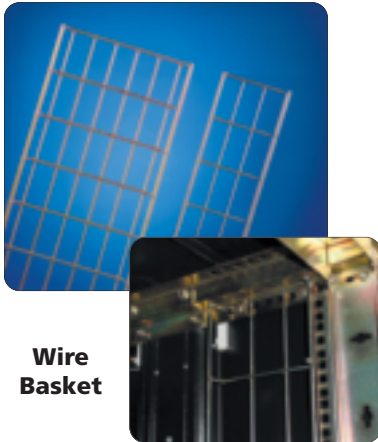
- Available types
 - Patch Cord Organizers
 - Cable Trough Organizers
 - Horizontal Cable Organizers
- 1U to 4U for small to large cable bundles.

Vertical Cable Tray & Wire Basket

Vertical Cable Tray and Wire Basket installs in the cabling area on the interior sides of the cabinet and mounts to the Z-channels top and bottom with the fill area facing inward. Tray and wire basket can be positioned anywhere from the front to the rear of the cabinet.



Cable Tray



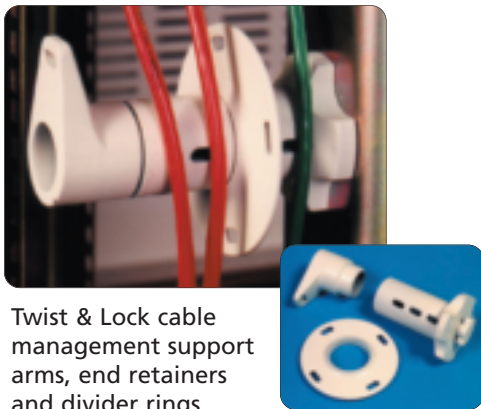
Wire Basket

	Part Number See Color Code Below to Complete Part Number	Width		Height In 'U'	Shipping Weight		
		in.	(mm)		lbs.	(kg)	
Cable Tray	ACTR27	3	75	27	4.5	2.1	
	ACTR32	3	75	32	5.4	2.5	
	Depth						
	ACTR39	3	75	39	6.6	3.0	
	1/2" (13mm)	ACTR42	3	75	42	7.1	3.3
	ACTR47	3	75	47	8.0	3.7	
	ACTRW27	6	150	27	6.0	2.7	
	ACTRW32	6	150	32	7.1	3.3	
	ACTRW39	6	150	39	8.7	4.0	
	ACTRW42	6	150	42	9.4	4.3	
	ACTRW47	6	150	47	10.5	4.8	
Wire Basket	ABS2715	6	150	27	3.0	1.3	
	ABS3215	6	150	32	3.5	1.5	
	Depth						
	ABS3915	6	150	39	4.3	1.9	
	1" (25mm)	ABS4215	6	150	42	4.7	2.0
	ABS4715	6	150	47	5.2	2.3	
	(Yellow zinc finish with mounting hardware)	ABS2730	12	300	27	5.5	2.4
	ABS3230	12	300	32	6.5	2.8	
	ABS3930	12	300	39	7.9	3.4	
	ABS4230	12	300	42	8.5	3.7	
ABS4730	12	300	47	9.5	4.1		

Color Code
A = Light Gray
B = Black

Twist & Lock Management

New Twist & Lock cable management system is designed to attach to all Access EIA mounting rails, and is also available as a 2U high 19" panel mount version. With its 1 3/8" (35mm) diameter and 3 3/8" (85mm) cable support area, Twist & Lock ensures the correct bend radius on all vertical and horizontal cable installations. Material is glass reinforced nylon.



Twist & Lock cable management support arms, end retainers and divider rings.

Part Number	Description	Shipping Weight	
		lbs.	(kg)
TLCMS	Arms & Ends (pack of 10)	2.0	0.9
TLCMR	Divider Rings (pack of 10)	1.0	0.4

Plastic Cable Hoops

New innovation to the D-Ring. This flexible cable hoop provides easy cable bundle management. Material is SR5 polypropylene.



Part Number	Opening		Shipping Weight	
	in.	(mm)	lbs.	(kg)
CTL	4 1/8 x 1 3/4	105 x 45	1.0	0.4
CTS	2 3/4 x 1 3/16	70 x 30	1.0	0.4