



aluCASE

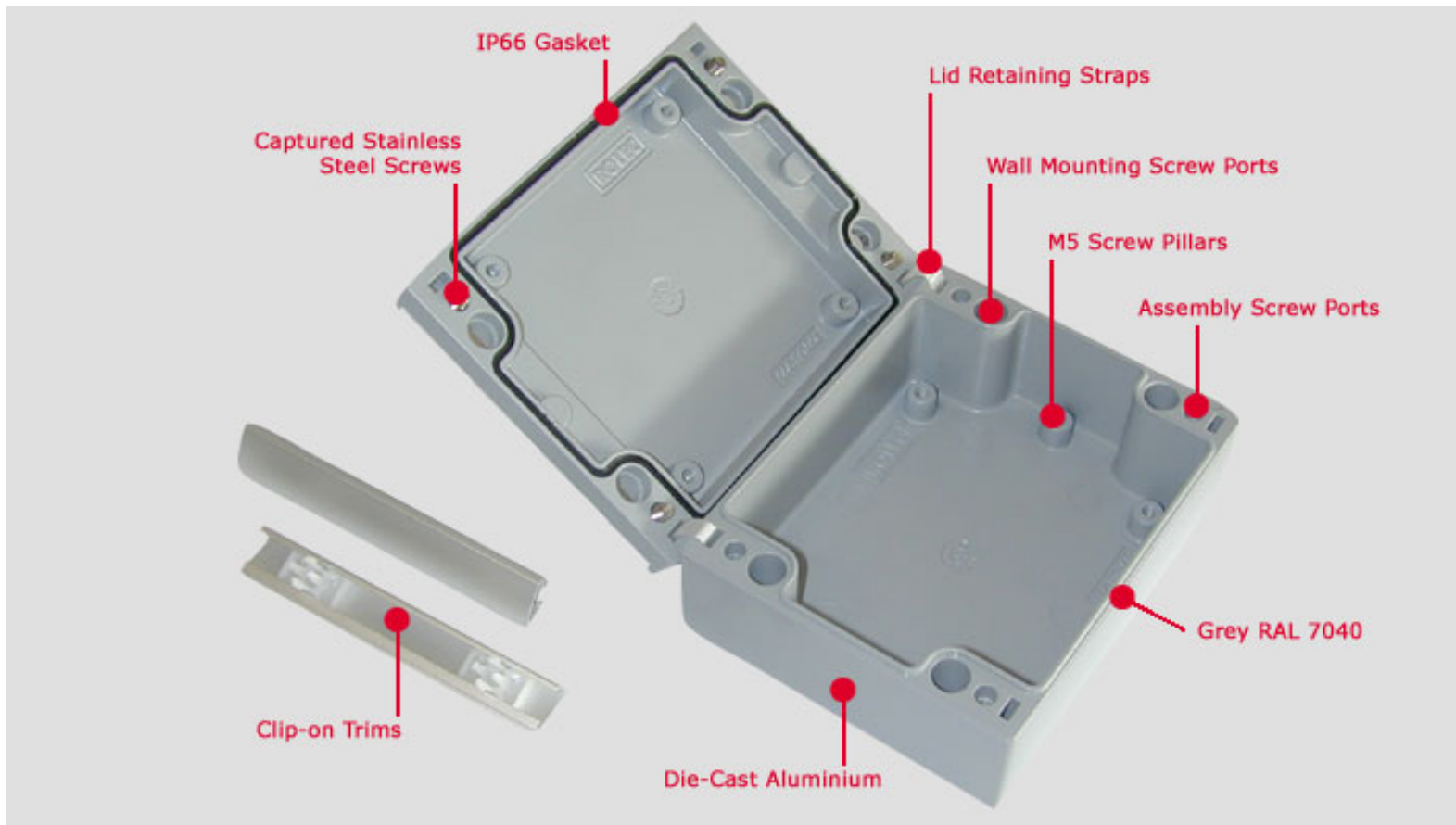


THE NEW ENCLOSURES CONCEPT!

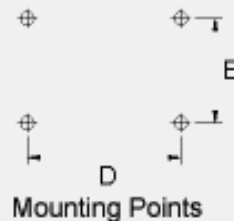
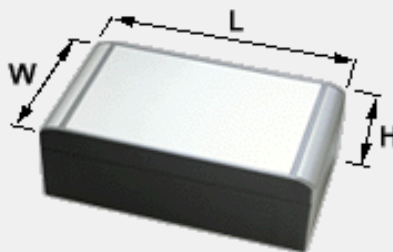
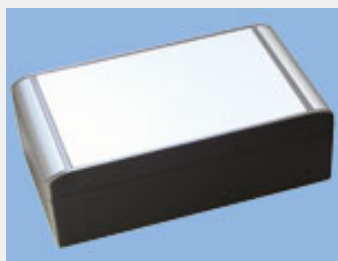
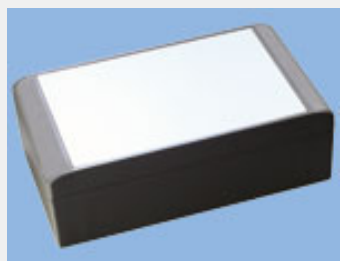
aluCASE is our latest range of IP67 die-cast enclosures. Our design team have incorporated many new and unique features in order to create a much more modern and ergonomic series of off-the-shelf enclosures. Just take a look at these new features:



- 1** Recessed lid for membrane keypads or control panels - *No need to crop around the screws*
- 2** Screw ports for wall mounting even when the unit is assembled - *No need for wall brackets*
- 3** Clip-on trims hide the case and wall fixings - *Enclosures with visible screws now look very dated*
- 4** When open, the lid is retained by two straps (included) - *No need for separate accessories*
- 5** Modern integrated hinge design with no visible fixings - *Ugly hinges now obsolete*
- 6** Optional keylock incorporated in the hinge assembly - *Better design than traditional keylocks*
- 7** Also available from our [Distributors](#)



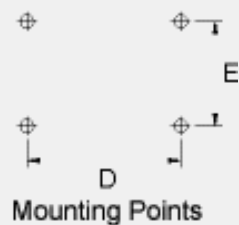
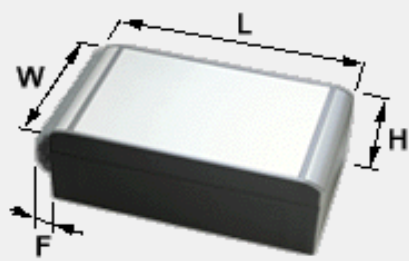
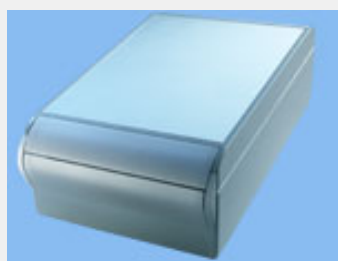
aluCASE ENCLOSURES



Part No. With Plastic Trims Grey RAL 7040 (click for price!)	Part No. With Anodised Aluminium Trims (click for price!)	Type	W	L	H	D	E	Weight	Drawings PDF or DWG Formats
191.090.000	191.090.100	AC 090	90	120	60	102	40	580g	PDF DWG
191.092.000	191.092.100	AC 092	90	160	60	142	40	680g	PDF DWG
190.110.000	190.110.100	ACF 110	110	140	60	122	60	700g	PDF DWG
190.112.000	190.112.100	ACF 112	110	200	60	182	60	880g	PDF DWG
190.130.000	190.130.100	ACF 130	130	160	70	142	80	910g	PDF DWG
190.132.000	190.132.100	ACF 132	130	220	70	202	80	1,130g	PDF DWG
190.150.000	190.150.100	ACF 150	150	180	60	162	100	968g	PDF DWG

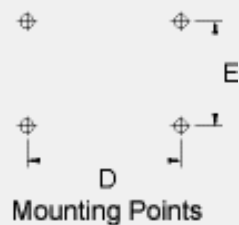
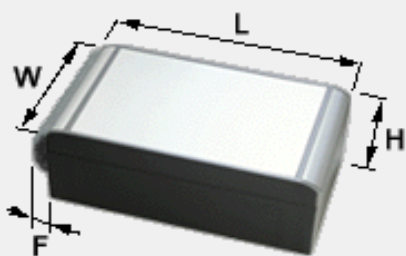
191.150.000	191.150.100	AC 150	150	180	90	162	100	1,216g	PDF DWG
190.152.000	190.152.100	ACF 152	150	260	60	242	100	1,273g	PDF DWG
191.152.000	191.152.100	AC 152	150	260	90	242	100	1,569g	PDF DWG
190.170.000	190.170.100	ACF 170	170	200	60	182	120	1,096g	PDF DWG
191.170.000	191.170.100	AC 170	170	200	90	182	120	1,430g	PDF DWG
190.172.000	190.172.100	ACF 172	170	280	60	262	120	1,471g	PDF DWG
191.172.000	191.172.100	AC 172	170	280	90	262	120	1,789g	PDF DWG

aluCASE ENCLOSURES With Hinge



Part No. (click for price!)	Type	W	L	H	D	E	F	Weight	Drawing PDF or DWG formats
190.110.111	ACF 110 S	110	140	60	122	60	9.5	700g	PDF DWG
190.112.111	ACF 112 S	110	200	60	182	60	9.5	880g	PDF DWG
190.130.111	ACF 130 S	130	160	70	142	80	9.5	910g	PDF DWG
190.132.111	ACF 132 S	130	220	70	202	80	9.5	1,130g	PDF DWG
190.150.111	ACF 150 S	150	180	60	162	100	9.5	968g	PDF DWG
191.150.111	AC 150 S	150	180	90	162	100	9.5	1,216g	PDF DWG
190.152.111	ACF 152 S	150	260	60	242	100	9.5	1,273g	PDF DWG
191.152.111	AC 152 S	150	260	90	242	100	9.5	1,569g	PDF DWG
190.170.111	ACF 170 S	170	200	60	182	120	9.5	1,096g	PDF DWG
191.170.111	AC 170 S	170	200	90	182	120	9.5	1,430g	PDF DWG
190.172.111	ACF 172 S	170	280	60	262	120	9.5	1,471g	PDF DWG
191.172.111	AC 172 S	170	280	90	262	120	9.5	1,789g	PDF DWG

aluCASE ENCLOSURES With Hinge & Integrated Keylock



Part No. (click for price!)	Type	W	L	H	D	E	F	Weight	Drawing PDF or DWG formats
190.110.115	ACF 110 ST	110	140	60	122	60	9.5	700g	PDF DWG
190.112.115	ACF 112 ST	110	200	60	182	60	9.5	880g	PDF DWG
190.130.115	ACF 130 ST	130	160	70	142	80	9.5	910g	PDF DWG
190.132.115	ACF 132 ST	130	220	70	202	80	9.5	1,130g	PDF DWG
190.150.115	ACF 150 ST	150	180	60	162	100	9.5	968g	PDF DWG
191.150.115	AC 150 ST	150	180	90	162	100	9.5	1,216g	PDF DWG
190.152.115	ACF 152 ST	150	260	60	242	100	9.5	1,273g	PDF DWG
191.152.115	AC 152 ST	150	260	90	242	100	9.5	1,569g	PDF DWG
190.170.115	ACF 170 ST	170	200	60	182	120	9.5	1,096g	PDF DWG
191.170.115	AC 170 ST	170	200	90	182	120	9.5	1,430g	PDF DWG
190.172.115	ACF 172 ST	170	280	60	262	120	9.5	1,471g	PDF DWG
191.172.115	AC 172 ST	170	280	90	262	120	9.5	1,789g	PDF DWG

TECHNICAL DATA & OPTIONS

Enclosure		Die-cast aluminium: EN AC-44300 DIN EN 1706 (GD AL Si 12 / DIN 1725)
Lid screws		Captive screws in stainless steel 1.4567
Lid support straps		PP (polypropylene)

<p>Clip-on Trims</p>		<p>Plastic version - POM (polyoxymethylene) Grey RAL 7040 Aluminium version - Anodised</p>
<p>Enclosure temperature range</p>		<p>As per gasket type fitted.</p>
<p>Ingress Protection</p>		<p>IP 67 / DIN EN 60529:2000</p>
<p>IP 66 Gasket (Standard)</p>		<p>Forprene gasket (siliconfree) (-40°C to +150°C).</p>
<p>EMC Gasket (On request)</p>		<p>Option 'EMV'* - EMC gasket fitted into the enclosure lid. Maintains IP 66 protection. (-30°C to +100°C). * - On request at extra cost.</p>
<p>Internal mounting</p>		<p>M5 threaded pillars in the lid and the base for mounting your assemblies.</p>
<p>Condensation Glands - IP 67 (on request)</p>		<p>Gortex condensation glands can be fitted to the cases on request. These are especially useful when there is a large variance in the operating temperature over a short period, which can result in condensation on the inside of the enclosure. These glands ventilate the case while maintaining IP67 protection.</p>
<p>Finish / colour</p>		<p>Standard - Window grey RAL 7040 Option 'K' - Chromatizing before painting* Option 'L' - Corrosion proof coating RAL 5009* Other options- stove-finished structured paint, special colours * * - at extra cost.</p>
<p>Modifications</p>		<p>We can supply the enclosures ready for your assemblies by drilling, milling, engraving, painting, silk-screen printing, adding inserts and much more. Just ask us for a quotation. More about customising...</p>

[Request a catalogue](#)

[return to enclosures index](#)

[Request a sample](#)

[Home](#) [About Us](#) [Enclosures](#) [Technical](#) [Service Desk](#) [News](#) [Contact](#)

CALL (01489) 583858

Legal notice: copyright © 2000-2005 OKW Enclosures Ltd, UK. All rights reserved. Rev: 2005.09.27
Rolec ® is the registered trademark of Rolec Gehäuse-Systeme GmbH, Germany.

aluCASE 112 flach

